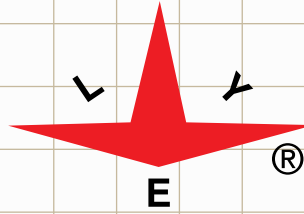


KEKALBOLEH SDN BHD
(199901021248/496148-K)
Lot No. 7, Lorong Perindustrian Kolombong Jaya,
Pusat Perindustrian Kolombong Jaya,
Mile 5.5, Jalan Kolombong,
88450 Kota Kinabalu, Sabah.
Tel/WhatsApp: 088-385555 / 013-8867570
Website: kekalboleh.com



LYE DUCTILE IRON

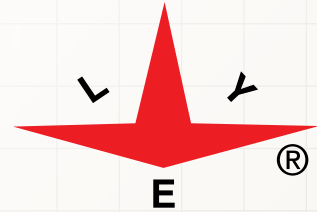
PRODUCT CATALOGUE



LYE MANUFACTURING SDN. BHD.

Manufacturer of Valves, Hydrants, Joints, Fittings & Manhole Covers.





ABOUT US

LYE Manufacturing Sdn. Bhd.(LYE) was incorporated on 10 May 1977 in Malaysia as a private limited company under Companies Act, 1965 under the name Lianyeu Manufacturing Sdn. Bhd. It assumed its present name on 23 March 2001. LYE has an authorized share capital of RM5.0 million and fully paid-up share capital of RM2.5 million respectively. LYE is a wholly owned sub-subsidiary of Engtex Group Berhad which is listed on the Main Market of Bursa Malaysia since 2 August 2002.



LYE operates from its factory occupying approximately 2.2 acres land area situated at Lot 1844, Jalan KPB 8, Kampung Baru Balakong, 43300 Kajang, Selangor. Started as a manufacturer of cast iron products, LYE is now specializing in the manufacturing of valves, fittings, hydrants, manhole covers, and industrial casting products that are widely used in water supply, sewerage treatment and fire fighting industries.

In addition to the acquisition of ISO 9001:2000 Quality Management System accredited by Moody International since July 2002, LYE products are manufactured in compliance with Malaysia JKR specifications as well as the international British Standards and ISO Standards, as well as certified by SIRIM & IKRAM (Malaysia).

Recognized as a premium quality brand, LYE products have been widely accepted by local consultants and authorities in Malaysia as well as in overseas markets.

As a prominent market leader in Malaysia, LYE has continuously investing resources into product development, quality improvement, and after sales services to deliver high quality products and services to uphold our customer satisfaction.

LYE MANUFACTURING SDN. BHD. (32836-H)

Manufacturer of Valves, Hydrants, Joints, Fittings & Manhole Covers.

Lot 1844, Jalan KPB 8, Kampung Baru Balakong, 43300 Kajang,
Selangor Darul Ehsan, Malaysia.

FACTORY Tel : 603-8961 1623
Fax : 603-8961 1092

SALES Tel : 603-6140 3131 (Hunting Line)
Fax : 603-6140 5858

WEBSITE www.lye.com.my
EMAIL enquiry@lye.com.my

CONTENT

ISOLATING VALVES

- 03 SLUICE VALVE
- 06 DOUBLE ECCENTRIC FLANGED BUTTERFLY VALVE
- 09 CONCENTRIC FLANGED BUTTERFLY VALVE
- 10 WAFER TYPE BUTTERFLY VALVE

AIR VALVES

- 12 DOUBLE ORIFICE STANDARD & SINGLE SMALL ORIFICE
- 13 HIGH PERFORMANCE "AEROKINETIC" AIR VALVE
- 16 DOUBLE ORIFICE KINETIC & SINGLE LARGE ORIFICE

CHECK VALVES

- 20 RUBBER FLAP TYPE CHECK VALVE
- 21 GLOBE SILENT CHECK VALVE
- 22 DOUBLE DOOR WAFER CHECK VALVE

STRAINERS

- 24 T-POT STRAINER
- 26 Y-STRAINER
- 27 ROSE STRAINER

JOINTS & SADDLES

- 29 DETACHABLE JOINT & VARIABLE ADAPTOR & FERROUS SADDLE
- 32 MECHANICAL JOINT FOR DI PIPE
- 34 UNIVERSAL JOINT
- 35 POLY RESTRAINT JOINT
- 37 FLANGED DISMANTLING JOINT
- 38 PUSH-ON JOINT RESTRAINT HARNESS
- 39 PE QUICK FLANGE ADAPTOR
- 40 UNI-FLANGE
- 41 STEPPED COUPLING

BULK METER STAND

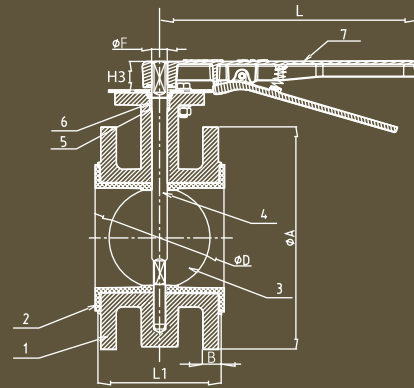
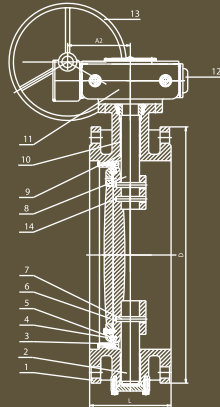
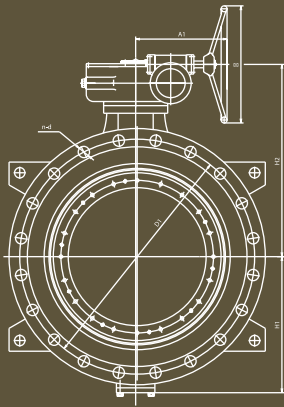
- 43 FUSION BONDED EPOXY COATED BULK METER POSITION SYSTEM

MANHOLE COVER & VALVE CHAMBER

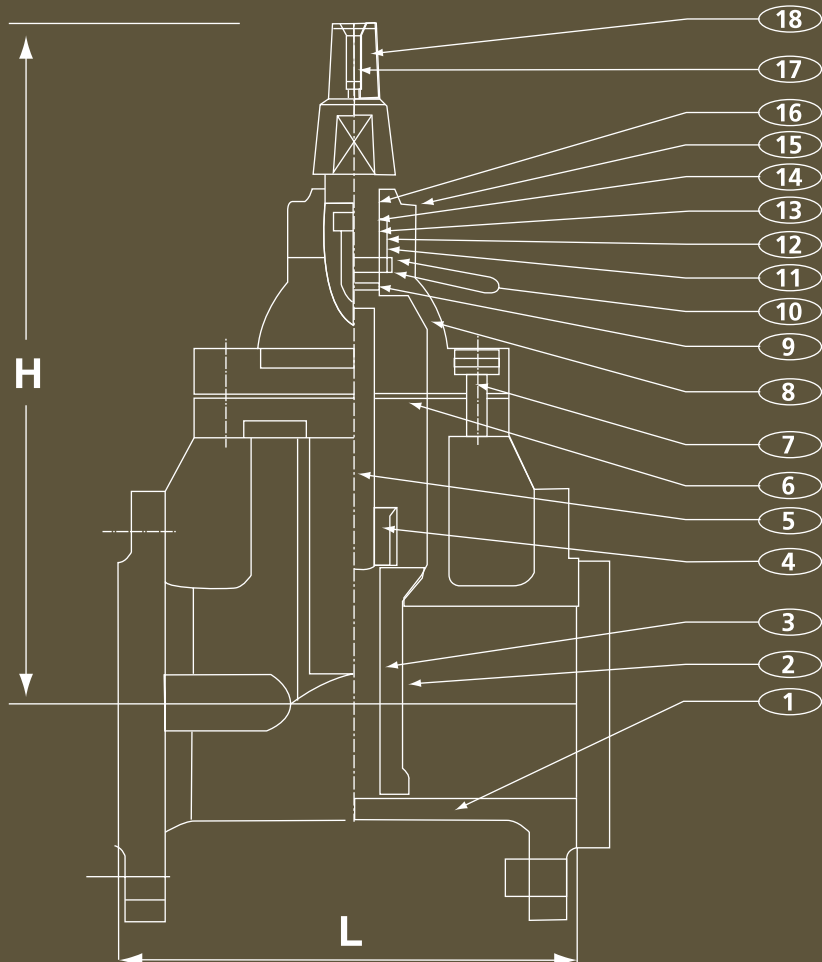
- 45 MANHOLE COVER & VALVE CHAMBER

HYDRANTS

- 48 PILLAR HYDRANT



ISOLATING VALVES



SLUICE VALVE

RESILIENT-SEATED & METAL-SEATED

RESILIENT SEAT

MODEL NO. : LYE 555 D.I. | BS5163 PN16
NON-RISING STEM GATE VALVE | TYPE B



METAL SEAT

MODEL NO. : LYE 555 D.I. | BS5163 PN16
NON-RISING STEM GATE VALVE | TYPE B

LYE Resilient / Metal Seated Ductile Iron Gate Valve or commonly known as Sluzice Valve is designed to comply with BS 5163 Type B.

ADVANTAGES OF LYE RESILIENT GATE VALVE

- (1) Straight through bore :
 - (a) Full Flow - The clear bore in the open position ensures optimum flow characteristics through the valve thereby reducing head loss.
 - (b) Full Close - No accumulation of debris under the wedge enabling the valve to be fully closed.
- (2) Lower operating torque :
 - (a) Savings on automatic operators.
 - (b) Less efforts required.
- (3) Dust seal prevent ingress of foreign object.
- (4) Rubber covered gate.
 - (a) Drop tight closure.
 - (b) Would not be easily damaged by any foreign object.
 - (c) Gate chatter eliminated.
- (5) Internal and external body is coated with polymeric coating - fusion bonded epoxy coating, it gives excellent resistance to corrosion, abrasion, wear and tear.
- (6) Allow inspection and stem seal renewal under full operating pressure when gate is in open position.
- (7) Protects stem housing, especially in buried service conditions.
- (8) Bolts sealed with wax to prevent corrosion.



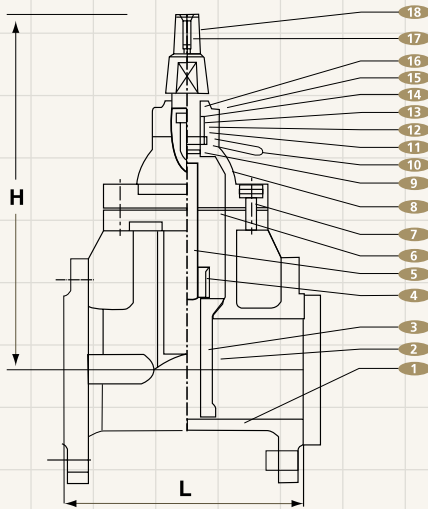
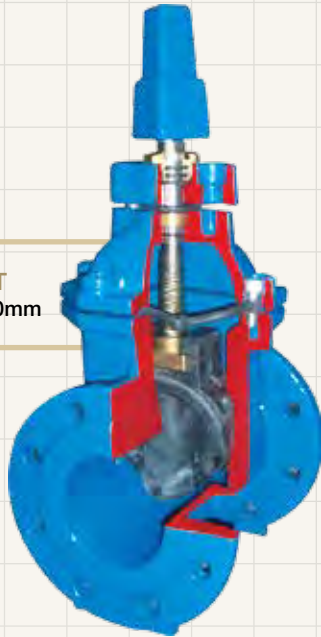
LYE MANUFACTURING SDN. BHD. (32836-H)
Manufacturer of Valves, Hydrants, Joints, Fittings & Manhole Covers.



ISOLATING VALVES

SLUICE VALVE | RESILIENT-SEATED

RESILIENT SEAT
DN 50mm - DN600mm



MATERIAL FOR MAIN PARTS

ITEM	COMPONENTS	MATERIAL	STANDARD	GRADE
1	BODY	DUCTILE IRON	BS EN 1563	EN-GJS-500-7
2	RUBBER COATING	RUBBER	MS 672, BS EN 681	EPDM (66-75-IRHD Hardness)
3	WEDGE	DUCTILE IRON	BS EN 1563	EN-GJS-500-7
4	STEM NUT	BRASS	BS EN 12165	CuZn39Pb2
5	STEM	STAINLESS STEEL	BS EN 10088-3	431S29
6	GASKET	RUBBER	MS 672, BS EN 681	EPDM (66-75-IRHD Hardness)
7	ALLEN CAP SCREW	STAINLESS STEEL	BS EN 10088-3	304S31
8	BONNET	DUCTILE IRON	BS EN 1563	EN-GJS-500-7
9	O-RING	RUBBER	MS 672, BS EN 681	EPDM (66-75-IRHD Hardness)
10	TRUST COLLAR	BRASS	BS EN 12165	CuZn39Pb2
11	O-RING	RUBBER	MS 672, BS EN 681	EPDM (66-75-IRHD Hardness)
12	O-RING	RUBBER	MS 672, BS EN 681	EPDM (66-75-IRHD Hardness)
13	SLEEVE	NYLON	-	POLYMIDE NYLON 6
14	O-RING	RUBBER	MS 672, BS EN 681	EPDM (66-75-IRHD Hardness)
15	GLAND	DUCTILE IRON	BS EN 1563	EN-GJS-500-7
16	DUST-PROOF COVER	RUBBER	MS 672, BS EN 681	EPDM(66-75-IRHD Hardness)
17	ALLEN CAP SCREW	STAINLESS STEEL	BS EN 10088-3	304S31
18	CAP	DUCTILE IRON	BS EN 1563	EN-GJS-500-7
19	WEDGE SLOT	NYLON	-	POLYMIDE NYLON 6

DIMENSION: MM

SIZE	L	H	L	
50	178	344	With By-Pass Valve	
65	190	350		
80	203	399		
100	229	421		
150	267	512		
200	292	598		
250	330	701		
300	356	784		
350	381	940		
400	406	1040		
450	432	1144		650
500	457	1240		700
600	508	1436		800

Flanges designed and drilled according to BS EN 1092-2 Table 9

Please Note: Technical data provided is indicative only and may be subject to change without notice

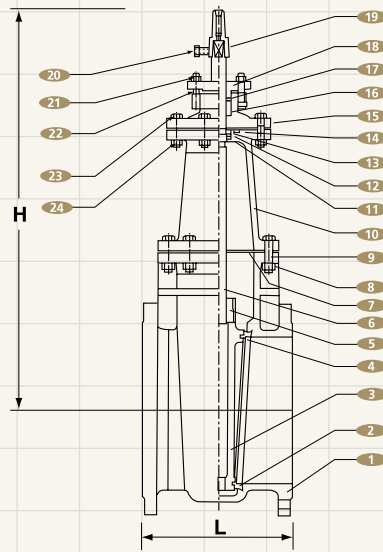


LYE MANUFACTURING SDN. BHD. (32836-H)
Manufacturer of Valves, Hydrants, Joints, Fittings & Manhole Covers.



ISOLATING VALVES

SLUICE VALVE | METAL-SEATED



METAL SEAT
DN 50mm - DN600mm

DIMENSION: MM

SIZE	L	H	L
50	178	344	With By-Pass Valve
80	203	399	
100	229	421	
150	267	512	
200	292	598	
250	330	701	
300	356	784	
350	381	1118	
400	406	1194	
450	432	1297	
500	457	1382	700
600	508	1580	800

Flanges designed and drilled according to BS EN 1092-2 Table 9

MATERIAL FOR MAIN PARTS

ITEM	COMPONENTS	MATERIAL	STANDARD	GRADE
1	BODY	DUCTILE IRON	BS EN 1563	EN-GJS-500-7
2	SEAT SEALING	GUNMETAL	BS EN 1982	CuSnZn5Pb5-C
3	WEDGE	DUCTILE IRON	BS EN 1563	EN-GJS-500-7
4	SEAT SEALING	GUNMETAL	BS EN 1982	CuSnZn5Pb5-C
5	STEM NUT	GUNMETAL	BS EN 1982	CuSnZn5Pb5-C
6	STEM	STAINLESS STEEL	BS EN 10088-3	431S29
7	GASKET	RUBBER	MS 672, BS EN 681	EPDM (66-75-IRHD Hardness)
8	NUT	CARBON STEEL	BS 4190	-
9	BOLT	CARBON STEEL	BS 4190	-
10	BONNET	DUCTILE IRON	BS EN 1563	EN-GJS-500-7
11	BACK SEAT	RUBBER	MS 672, BS EN 681	EPDM (66-75-IRHD Hardness)
12	WASHER	STAINLESS STEEL	BS EN 10088-3	SS304
13	BEARING	GUNMETAL	BS EN 1982	CuSnZn5Pb5-C
14	O-RING	RUBBER	MS 672, BS EN 681	EPDM (66-75-IRHD Hardness)
15	PACKING BOX	DUCTILE IRON	BS EN 1563	EN-GJS-500-7
16	O-RING	RUBBER	MS 672, BS EN 681	EPDM (66-75-IRHD Hardness)
17	COLLAR	GUNMETAL	BS EN 1982	CuSnZn5Pb5-C
18	GLAND	DUCTILE IRON	BS EN 1563	EN-GJS-500-7
19	CAP	DUCTILE IRON	BS EN 1563	EN-GJS-500-7
20	BOLT	CARBON STEEL	BS 4190	-
21	NUT	CARBON STEEL	BS 4190	-
22	T-BOLT	CARBON STEEL	BS 4190	-
23	BOLT	CARBON STEEL	BS 4190	-
24	NUT	CARBON STEEL	BS 4190	-

Please Note: Technical data provided is indicative only and may be subject to change without notice

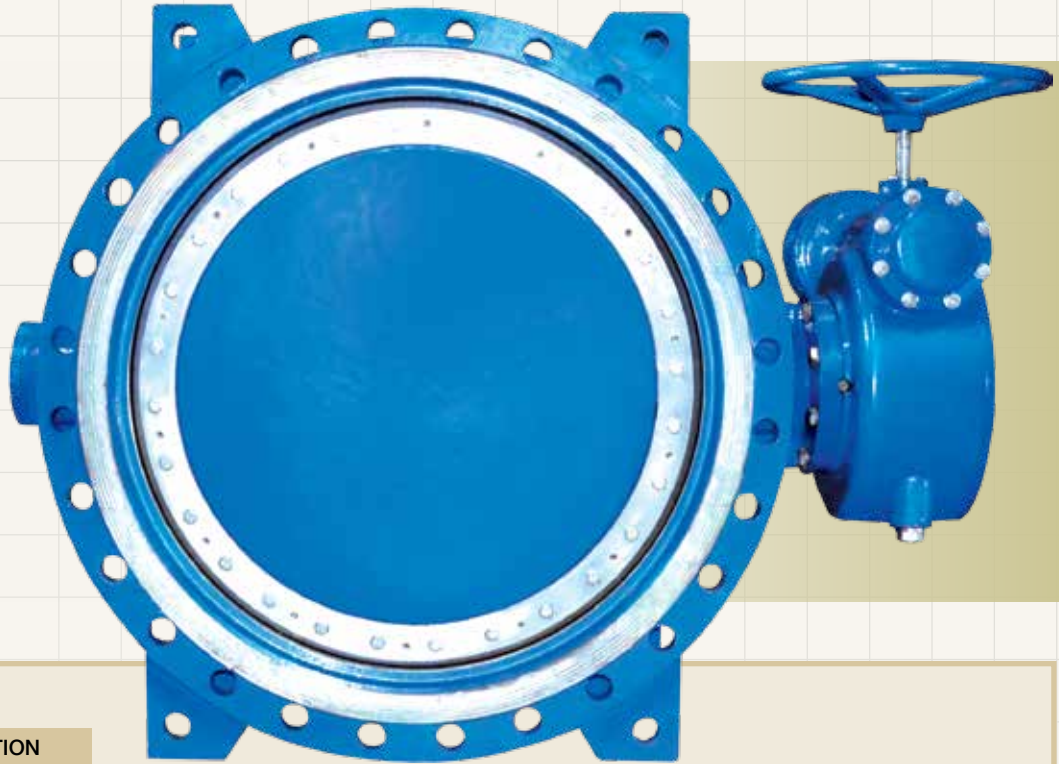


LYE MANUFACTURING SDN. BHD. (32836-H)
Manufacturer of Valves, Hydrants, Joints, Fittings & Manhole Covers.



ISOLATING VALVES

DOUBLE ECCENTRIC FLANGED BUTTERFLY VALVE



INTRODUCTION

Butterfly valve is design for waterworks in accordance with BS EN593 standard. Casted parts are made of selected materials with inherent strength and rigidity to withstand the pressure of fluids. The shaft and gears are also made of selected materials and machined to close tolerances. The disc is of a stream line shape and so loss of water head at the full opening of valve is minimized. A one-piece rubber seat-in-disc gives a reliable seal under period of services.

SPECIFICATIONS

Nominal diameter	50 to 2,400mm
Type of Fluid	Water
Max. Working Pressure	16 bar
Flange Dimension*	BS EN 1092-2
Hydro-static Test	Body Pressure : 24 bar
	Disc Strength : 24 bar
	Seat Leakage : 17.6 bar



LYE MANUFACTURING SDN. BHD. (32836-H)
Manufacturer of Valves, Hydrants, Joints, Fittings & Manhole Covers.



ISOLATING VALVES

DOUBLE ECCENTRIC FLANGED BUTTERFLY VALVE

FEATURES

- **Low Head Loss Characteristic**

This butterfly valve is designed with large and effective passage by separation of shaft into upper and lower sections. The disc is of a streamline design of smooth surface with little resistance to flow.

- **Sufficient Strength**

Casted parts such as the valve body and disc are made of selected materials that meet the optimum requirement of the product. In addition, because of sufficient wall thickness, these components possess satisfactory strength and rigidity to withstand the pressure of fluids.

- **Cost Saving**

Extensive research and field test have resulted in enhance simplicity of design and dependability at low cost.

- **Simplified Seat Construction**

Resin for positioning rubber seat is injected and cured after fully closing of valve, thus unnecessary compression force is not imposed on rubber seat, minimising the amount of fatigue and attains high seal ability for long period and with little torque required. Durability has been confirmed by various performance tests. This seat is replaceable in the event that it is damaged unexpectedly.

OPERATION INSTRUCTIONS

In order to achieve full benefit from the optimum properties of LYE butterfly valves the following instructions must be followed.

1. Storage

During storage the disc should remain in its slightly opened position as supplied, to protect the sealing edge and the seat. The valve must be kept in clean environment and direct sunlight must be avoided. Sealing surface must be strictly protected from external effects and damage. Use silicone grease on rubber seal to prevent it from sticking to metal surface.

2. Installation and Dismantling

- Valve must be cleaned before installation.
- Pipeline flanges must be checked for parallel alignment.
- Use of dismantling joint is recommended for easy installation and removal.
- Valves can be installed independent of the direction of flow, but the preferred installation position is with the seat in the upstream position.
- Note the arrow on the valve body.
- Valve can be installed in any angular position (vertical or horizontal) taking the preferred position of the actuator into consideration.
- Fully closed position of the disc must be ensured before installation.
- Valve must never be removed while the pipeline is under pressure

COATING

Standard coating is epoxy painting in blue color complying to BS6920.

BASIC MATERIALS

ITEM	COMPONENT	MATERIAL	BS REFERENCE	GRADE OR DESIGNATION
1	Body	Ductile Iron	BS EN 1563	EN-GJS-500-7
2	Lower Shaft	Stainless Steel	BS EN 10088-3	431S29
3	Seat	Stainless Steel	BS EN 10088-3	321S31
4	Seat Retainer	Stainless Steel	BS EN 10088-3	420S29
5	Seal-Ring	Synthetic Rubber	MS 672, BS EN 681	EPDM (66-75-IRHD Hardness)
6	Disc	Ductile Iron	BS EN 1563	EN-GJS-500-7
7	Pin	Stainless Steel	BS EN 10088-3	420S29
8	Upper Shaft	Stainless Steel	BS EN 10088-3	431S29
9	O-Ring	Synthetic Rubber	MS 672, BS EN 681	EPDM (66-75-IRHD Hardness)
10	Bush	Bronze	BS 1400	CA106
11	Actuator	Ductile Iron	BS EN 1563	EN-GJS-500-7
12	Gear Case	Ductile Iron	BS EN 1563	EN-GJS-500-7
13	Handwheel	Ductile Iron	BS EN 1563	EN-GJS-500-7
14	Reamer Bolt & Nut	Stainless Steel	BS EN 10088-3	321S31

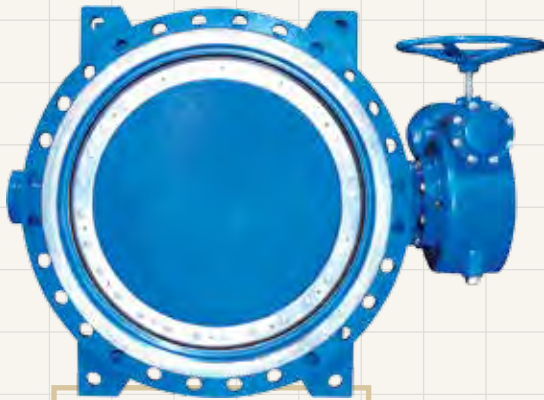


LYE MANUFACTURING SDN. BHD. (32836-H)
 Manufacturer of Valves, Hydrants, Joints, Fittings & Manhole Covers.

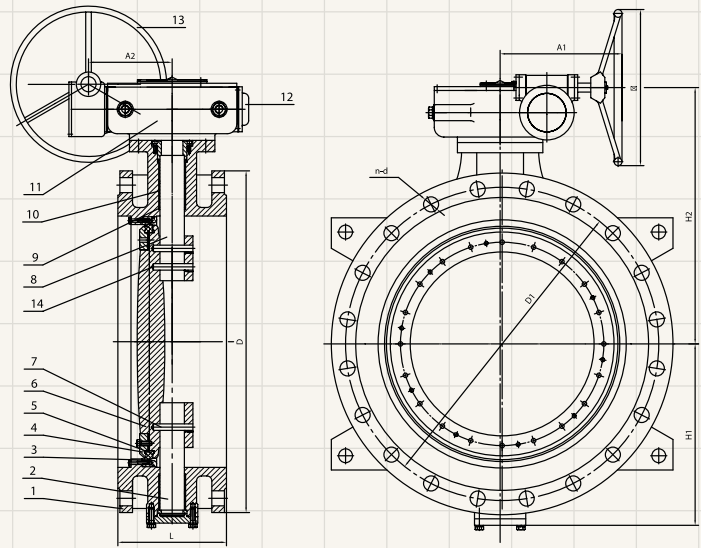


ISOLATING VALVES

DOUBLE ECCENTRIC FLANGED BUTTERFLY VALVE



**BUTTERFLY VALVE
TO BS EN 593**



FLANGES DESIGNED AND DRILLED ACCORDING TO BS EN 1092-2 TABLE 9

unit: mm

DN	Face-to-face Dimension		Outside Dia. D	Raise Face Dia. g	Bolt Holes			Bolt Designation M	Thickness		Height	
	L	±			D1	No.	d		t	f	H1	H2
50	108	1	165	99	125	4	19	M16	19	3	83	140
80	114	1	200	132	160	8	19	M16	19	3	100	160
100	127	1	220	156	180	8	19	M16	19	3	120	175
150	140	1	285	211	240	8	23	M20	19	3	160	240
200	152	1	340	266	295	12	23	M20	20	3	185	265
250	165	1	405	319	340	12	28	M24	22	3	215	295
300	178	1	455	370	410	12	28	M24	24.5	4	240	325
350	190	1	520	429	470	16	28	M24	26.5	4	270	360
400	216	2	580	480	525	16	31	M27	28.0	4	300	405
450	222	2	640	548	585	20	31	M27	30.0	4	340	465
500	229	2	715	609	650	20	34	M30	31.5	4	380	505
600	267	2	840	720	770	20	37	M33	36.0	5	450	590
700	292	2	910	794	840	24	37	M33	39.5	5	510	710
800	318	2	1025	901	950	24	41	M36	43.0	5	570	790
900	330	2	1125	1001	1050	28	41	M36	46.5	5	620	830
1000	410	3	1255	1112	1170	28	44	M39	50.0	5	710	910
1200	470	3	1485	1328	1390	32	50	M45	57.0	5	840	1095
1400	530	3	1685	1530	1590	36	50	M45	60.0	5	970	1155
1600	600	3	1930	1750	1820	40	57	M52	65	5	1075	1400
1800	670	4	2130	1950	2020	44	57	M52	70	5	1260	1700
2000	760	4	2345	2150	2230	48	62	M56	75	5	1410	1850
2200	800	4	2555	2370	2440	52	62	M56	80	6	1530	1980
2400	850	5	2765	2570	2650	56	62	M56	85	6	1670	2100

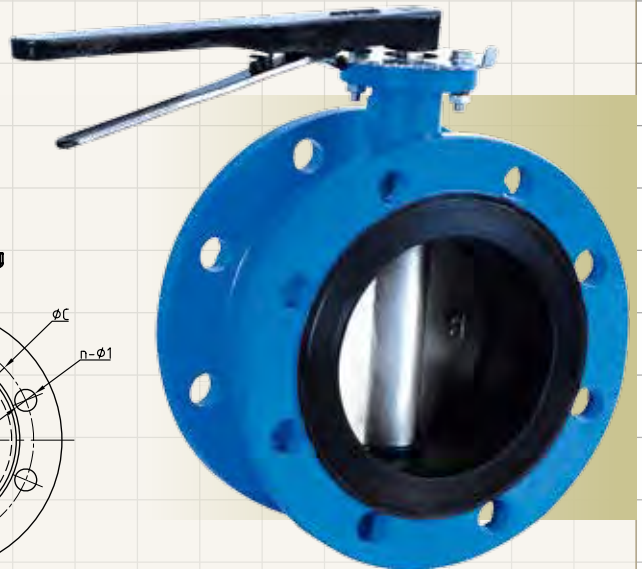
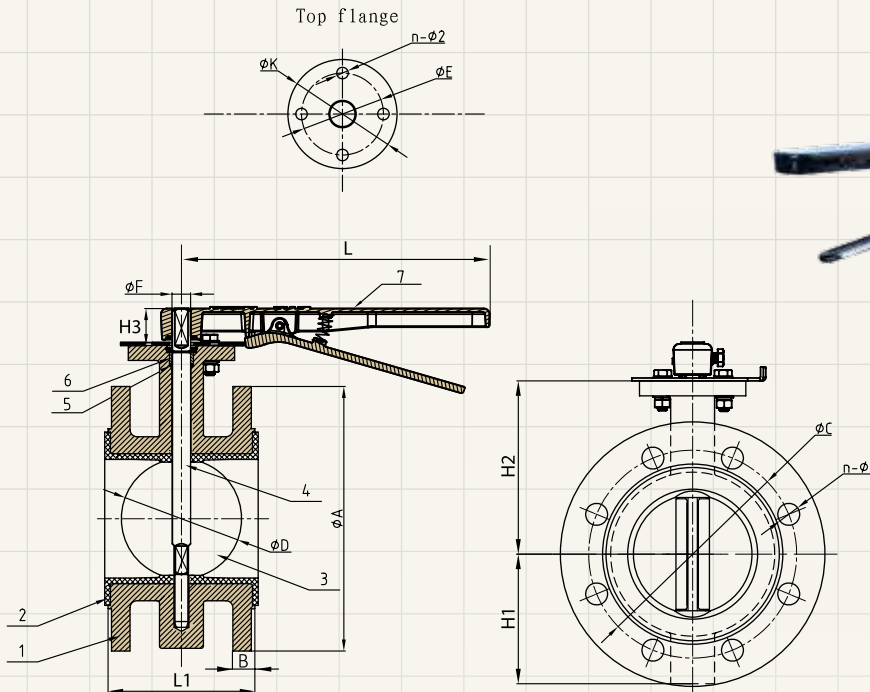
Please Note: Technical data provided is indicative only and may be subject to change without notice



LYE MANUFACTURING SDN. BHD. (32836-H)
Manufacturer of Valves, Hydrants, Joints, Fittings & Manhole Covers.



CONCENTRIC FLANGED BUTTERFLY VALVE



Material Specification		
Part No.	Part	Standard Specification
1	Valve Body	Ductile Iron 500-7
2	Seat	EPDM
3	Disc	Ductile Iron 500-7
4	Stem	SS420
5	O-Ring	EPDM
6	Bushing	Nylon 1010
7	Lever	Ductile Iron 500-7

- Design Standard: BS EN 593
- Face to Face: BS EN 558 Series 13
- Connection Ends: BS EN 1092 PN16
- Top Flange standard: ISO 5211, Stem drive by keys, parallel or diagonal square or flat head
- Working Pressure: PN16
- Temperature Range: 0°C- 80°C
- Coating: Fusion Bonded Epoxy Coating in accordance with ANSI/AWWA C550

DN		Dimensions (mm)															
Inch	mm	L1	H1	H2	H3	ØA	B	ØC	N-Ø1	ØD	ØE	ØK	N-ØD2	ISO 5211	ØF	G	L
2"	50	108	80	110	32	165	19	125	4-Ø19	53.9	70	90	4-Ø10	F07	14	9.53	267
2.5"	65	112	80	131	32	185	19	145	4-Ø19	65.2	70	90	4-Ø10	F07	14	9.53	267
3"	80	114	95	134	32	200	19	160	8-Ø19	79.7	70	90	4-Ø10	F07	14	9.53	267
4"	100	127	113	150	32	220	19	180	8-Ø19	105	70	90	4-Ø10	F07	16	11.14	267
5"	125	140	114	170	32	250	19	210	8-Ø19	130	70	90	4-Ø10	F07	16	11.14	267
6"	150	140	139	180	32	285	19	240	8-Ø23	156	70	90	4-Ø10	F07	20	12.7	267
8"	200	152	175	210	45	340	20	295	12-Ø23	206.7	102	125	4-Ø12	F10	26	20.6	356
10"	250	165	203	245	45	405	22	355	12-Ø28	253.3	102	125	4-Ø12	F10	26	20.6	356
12"	300	178	242	276	45	460	24.5	410	12-Ø28	301.9	102	125	4-Ø12	F10	28	22.1	490

Please Note: Technical data provided is indicative only and may be subject to change without notice

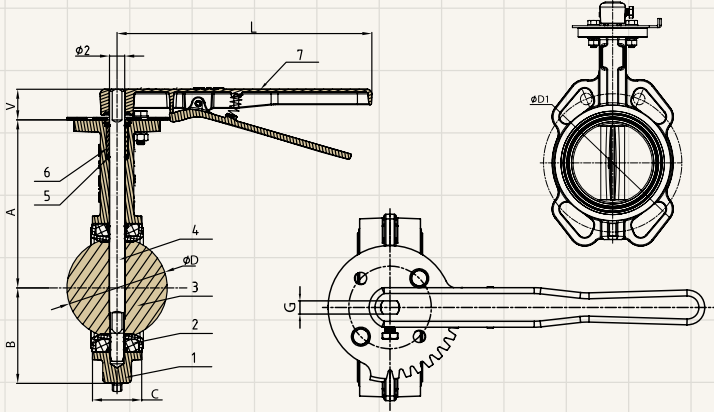


LYE MANUFACTURING SDN. BHD. (32836-H)
 Manufacturer of Valves, Hydrants, Joints, Fittings & Manhole Covers.



ISOLATING VALVES

WAFER TYPE BUTTERFLY VALVE



- Design Standard: BS EN 593
- Connection Ends: BS EN 1092 PN16, AS 2129 TABLE E, JIS B2212 10K, BS 10 TABLE D/E
- Top Flange Standard: ISO 5211
Stem drive by keys, parallel or diagonal square or flat head
- Working Pressure: PN16
- Temperature Range: 0°C - 80°C
- Coating: Fusion Bonded Epoxy Coating

FEATURES:

- (1) **Material:**
Body and lever are all produced in ductile iron material (EN-GJS-500-7) which provides guarantee for high strength and good corrosion resistance.
- (2) **Design:**
Universal flange connection to BS EN 1092 PN6/10/16, ASME B16.1 CL 125, ASME B16.5 CL 150, GB9113, JIS B2112 10K, AS 2129 Table E, BS 10 Table D/E.
- (3) **Coating**
Fusion bonded epoxy coating of valve body and lever provides reliable corrosion resistance.
 - Ductile Iron Lever and Body
 - Stainless Steel Stem
 - Fusion Bonded Epoxy Coating
 - Disc: DI
 - Seat: EPDM

STATEMENT:

Resilient centerline butterfly valves usually serve to cut off medium flow in the piping system, widely applied in the field of potable water, water supply and drainage, sewage disposal, irrigation, air conditioning, fire protection as well as chemical and energy industry. The design of the butterfly valves, however, makes it also suitable to serve as adjusting valve.

Material Specification		
Part No.	Part	Standard Specification
1	Valve Body	Ductile Iron 500-7
2	Seat	EPDM
3	Disc	Ductile Iron 500-7
4	Stem	SS420, One-Piece Stem Design
5	O-Ring	EPDM
6	Bushing	Nylon
7	Lever	Ductile Iron 500-7

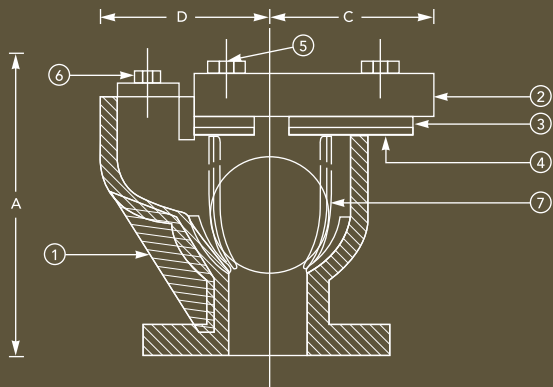
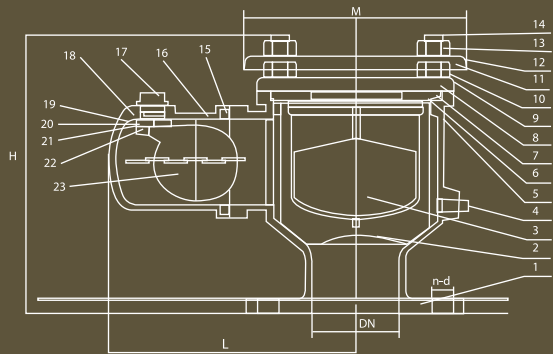
DN		Dimensions (mm)									
Inch	mm	A	B	V	C	ØD	Ø2	G	L	ØD1	ISO 5211
1.5"	40	138	64.5	32	33	43.9	14	9.45	267	110	F07
2"	50	140.5	64.5	32	43	53.9	14	9.53	267	125	F07
2.5"	65	153	72	32	46	65.2	14	9.53	267	145	F07
3"	80	157.5	86	32	46	79.7	14	9.53	267	160	F07
4"	100	176	100	32	52	105	16	11.14	267	180	F07
5"	125	191	112	32	56	130	16	11.14	267	210	F07
6"	150	202.5	128	32	56	156	20	12.7	267	240	F07
8"	200	243.5	162	45	60	206.7	26	20.6	356	295	F10
10"	250	273	194	45	68	253.3	26	20.6	490	355	F10
12"	300	311	223	45	78	301.9	28	22.1	490	410	F10

Please Note: Technical data provided is indicative only and may be subject to change without notice

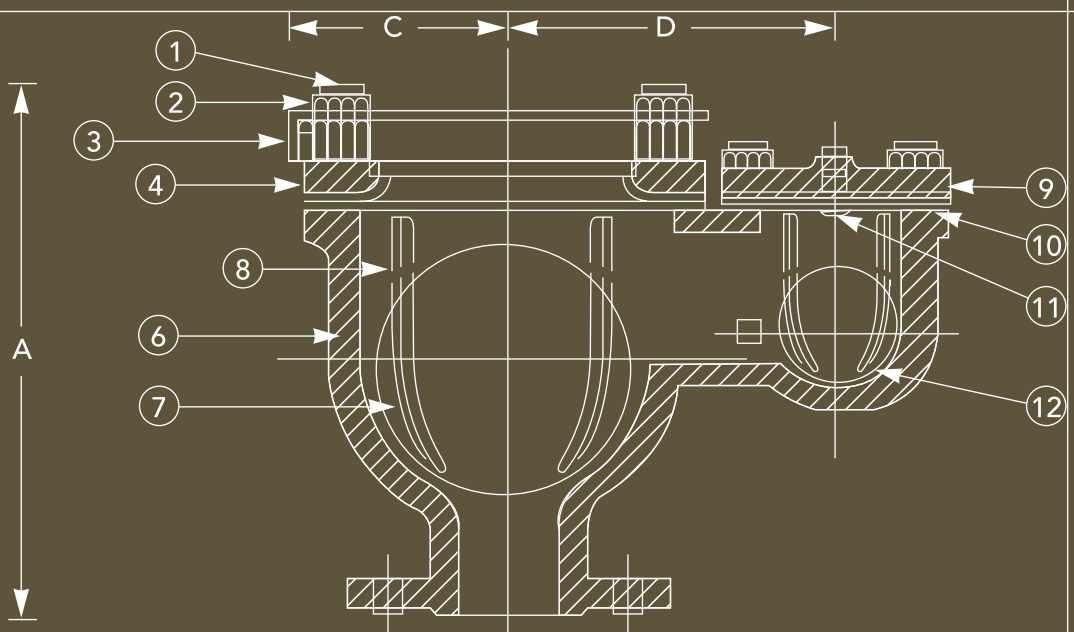


LYE MANUFACTURING SDN. BHD. (32836-H)
Manufacturer of Valves, Hydrants, Joints, Fittings & Manhole Covers.



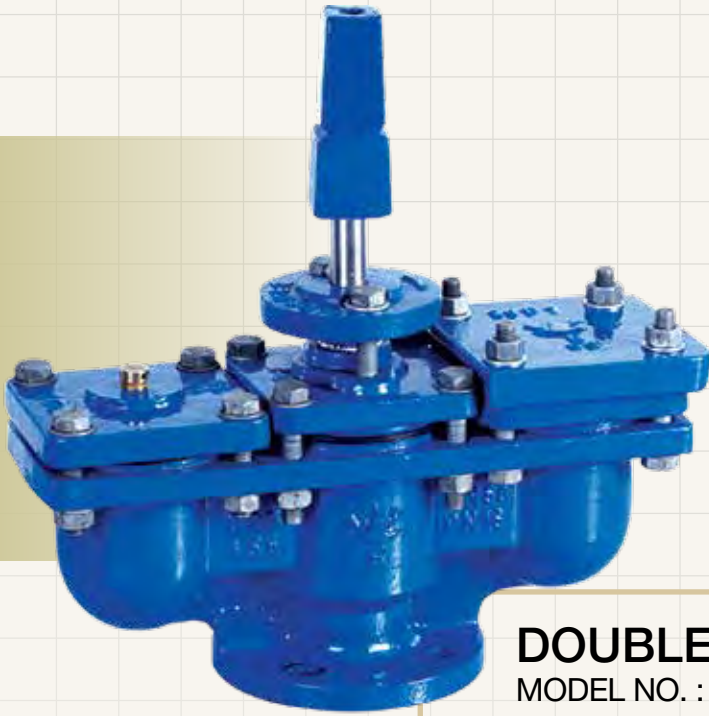


AIR VALVES



AIR VALVES

DOUBLE ORIFICE STANDARD & SINGLE SMALL ORIFICE



DOUBLE ORIFICE STANDARD
MODEL NO. : 455



SINGLE SMALL ORIFICE
MODEL NO. : 154 W/O GATE VALVE
MODEL NO. : 155 C/W GATE VALVE



LYE MANUFACTURING SDN. BHD. (32836-H)
Manufacturer of Valves, Hydrants, Joints, Fittings & Manhole Covers.



HIGH PERFORMANCE “AEROKINETIC” AIR VALVE



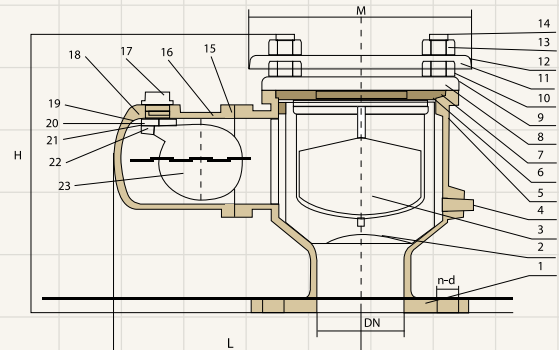
**HIGH PERFORMANCE
“AEROKINETIC” AIR VALVE
MODEL No. : LYE 358**

A High Performance Air Valve that meets all application and installation parameters regardless of piping material.

The “Aerokinetic” Air Valve is ideal for the release of high volumes of air in piping systems and has minimum moving parts thus ensuring long-term reliability.

MAIN FEATURES

- High discharge and inflow capacities throughout the full pressure range.
- All valves coated with fusion bonded epoxy (FBE).
- Unique design prevents premature seating of float.
- Working pressure: 10/16 bar.
- Shell test pressure: 15/24 bar.
- Seat test pressure: 11/17.6 bar.
- Working temperature: 0.6°C ~ 52°C.



**OVERALL DIMENSIONS FOR LYE “AEROKINETIC” AIR VALVE
(MODEL: LYE 358) DN50 TO DN150**

Specification (DN)	L (mm)	M (mm)	H (mm)
50	228	206	321
65	228	206	321
80	228	206	321
100	239	280	410
150	239	280	410

No	Description	Material	Specification
1	Main Body	Ductile Iron	BS EN 1563 500/7
2	Float Guides	ABS	ISO 2580
3	Main Float	ABS	ISO 2580
4	Drain Plug	Stainless Steel	BS 970 304S15
5	Supporting Plate	ABS	ISO 2580
6	Seal Ring	EPDM	MS 671:99 / BS EN 681
7	Seat Ring	ABS	ISO 2580
8	Cover	Ductile Iron	BS EN 1563 500/7
9	Washer	Galvanized Steel	BS 3692
10	Nut	Galvanized Steel	BS 3692
11	Cowl	Ductile Iron	BS EN 1563 500/7
12	Washer	Galvanized Steel	BS 4190
13	Nut	Galvanized Steel	BS 4190
14	Bolt	Galvanized Steel	BS 4190
15	O-ring	EPDM	MS 672:99 / BS EN 681
16	Side Body	Ductile Iron	BS EN 1563 500/7
17	Orifice Cover	High Tensile Nylon	-
18	Gasket	EPDM	MS 672:99 / BS EN 681
19	Orifice Bracket	High Tensile Nylon	-
20	Screw	Stainless Steel	BS 970 304S15
21	Sealing Face	EPDM	MS 672:99 / BS EN 681
22	Hinge Pin	Stainless Steel	BS 970 304S15
23	Side Float	ABS	ISO 2580

Please Note: Technical data provided is indicative only and may be subject to change without notice

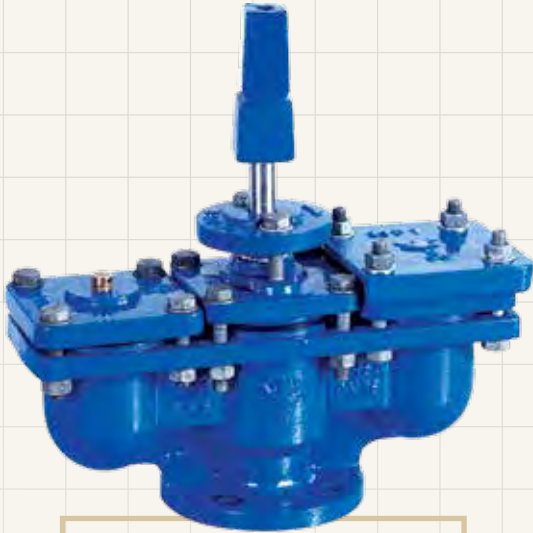


LYE MANUFACTURING SDN. BHD. (32836-H)
Manufacturer of Valves, Hydrants, Joints, Fittings & Manhole Covers.

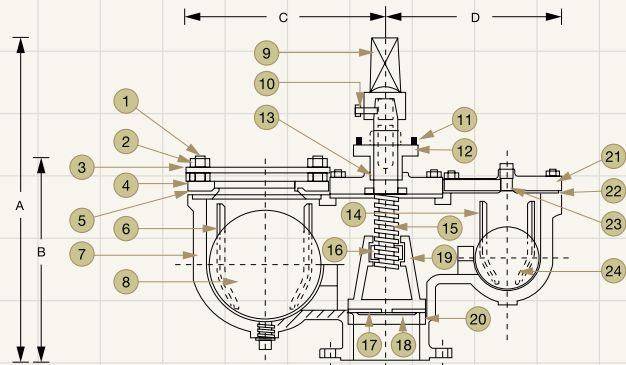


AIR VALVES

DOUBLE ORIFICE STANDARD AIR VALVE



DOUBLE ORIFICE STANDARD
Model No. : 455



MAXIMUM DIMENSION					
SIZE	A	B	C	D	E*
mm	mm	mm	mm	mm	Mm
50	415	240	245	245	200
80	425	245	245	245	200
100	480	325	285	245	245
150	515	415	370	286	250
200	615	475	475	315	310

B* - Width of air valve

NO	DESCRIPTION	MATERIAL	BS REF. NO.
1	BOLT & NUT	MILD STEEL	BS 4190 (MS 740)
2	NUT	MILD STEEL	BS 4190 (MS 740)
3	LARGE ORIFICE COVER	DUCTILE IRON (EN-GJS-500-7)	BS EN 1563
4	LARGE ORIFICE PLATE	DUCTILE IRON (EN-GJS-500-7)	BS EN 1563
5	GASKET	EPDM RUBBER	BS EN 681
6	BALL GUIDE	DUCTILE IRON (EN-GJS-500-7)	BS EN 1563
7	BODY	DUCTILE IRON (EN-GJS-500-7)	BS EN 1563
8	LARGE ORIFICE FLOAT (BALL)	ABS PLASTIC	ISO 2580
9	SPINDLE CAP	DUCTILE IRON (EN-GJS-500-7)	BS EN 1563
10	CAP SET SCREW	STAINLESS STEEL	BS 970 304S15
11	GLAND BOLT	MILD STEEL	BS 4190 (MS 740)
12	GLAND	DUCTILE IRON (EN-GJS-500-7)	BS EN 1563
13	O'RING	EPDM RUBBER	BS EN 681
14	BALL GUIDE	DUCTILE IRON (EN-GJS-500-7)	BS EN 1563
15	SPINDLE	STAINLESS STEEL	BS EN 10088-3
16	SPINDLE NUT	GUNMETAL (CUSN5ZN5PB5-C)	BS EN 1982
17	SEAL	EPDM RUBBER	BS EN 681
18	SEAL NUT	STAINLESS STEEL	BS 970 304S15
19	VALVE STOPPER	DUCTILE IRON (EN-GJS-500-7)	BS EN 1563
20	VALVE SEAT RING	DUCTILE IRON (EN-GJS-500-7)	BS EN 1563
21	SMALL ORIFICE PLATE	DUCTILE IRON (EN-GJS-500-7)	BS EN 1563
22	GASKET	EPDM RUBBER	BS EN 681
23	AIR RELEASE NIPPLE	BRASS (CZ116)	BS EN 12163
24	SMALL ORIFICE FLOAT BALL	ABS PLASTIC	ISO 2580



LYE MANUFACTURING SDN. BHD. (32836-H)
Manufacturer of Valves, Hydrants, Joints, Fittings & Manhole Covers.

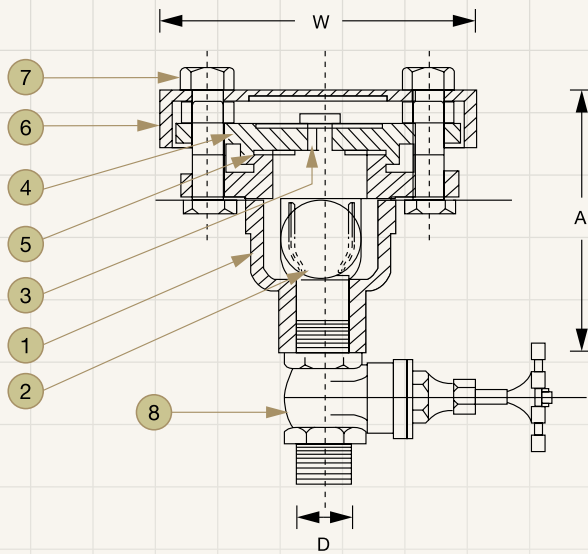


AIR VALVES

SINGLE SMALL ORIFICE



SINGLE SMALL ORIFICE
 LYE Model No. 154 w/o gate valve
 LYE Model No. 155 c/w gate valve



MAXIMUM DIMENSION				
SIZE	A	B*	W	D
mm	mm	mm	mm	mm
10	215	105	155	10
12	215	105	155	12
20	215	105	155	20
25	215	105	155	25

B* - Width of air valve

NO	DESCRIPTION	MATERIAL	BS REF. NO.
1	BODY	DUCTILE IRON (EN-GJS-500-7)	BS EN 1563
2	FLOAT (BALL)	ABS PLASTIC	ISO 2580
3	AIR RELEASE NUT	BRASS (CZ116)	BS EN 12163
4	PLATE	DUCTILE IRON (EN-GJS-500-7)	BS EN 1563
5	GASKET	EPDM RUBBER	BS EN 681
6	COVER	DUCTILE IRON (EN-GJS-500-7)	BS EN 1563
7	BOLT AND NUTS	MILD STEEL	BS 4190 (MS 740)
8	GATE VALVE	BRASS	BS 5154

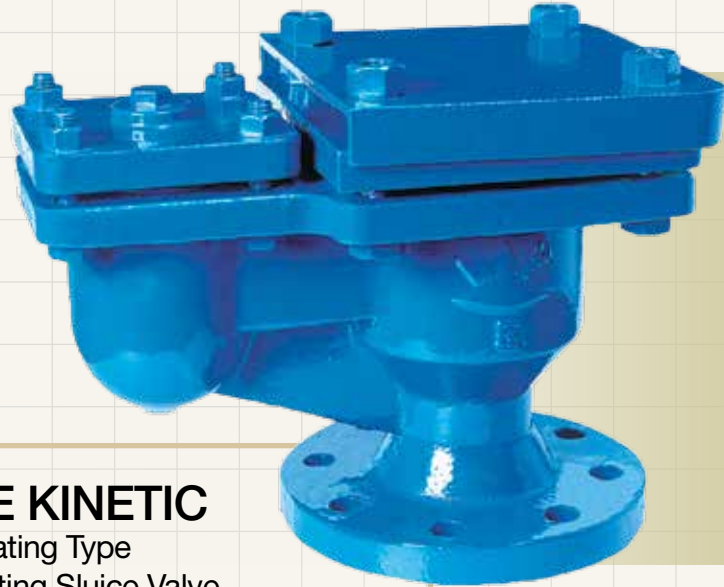
Please Note: Technical data provided is indicative only and may be subject to change without notice



LYE MANUFACTURING SDN. BHD. (32836-H)
 Manufacturer of Valves, Hydrants, Joints, Fittings & Manhole Covers.

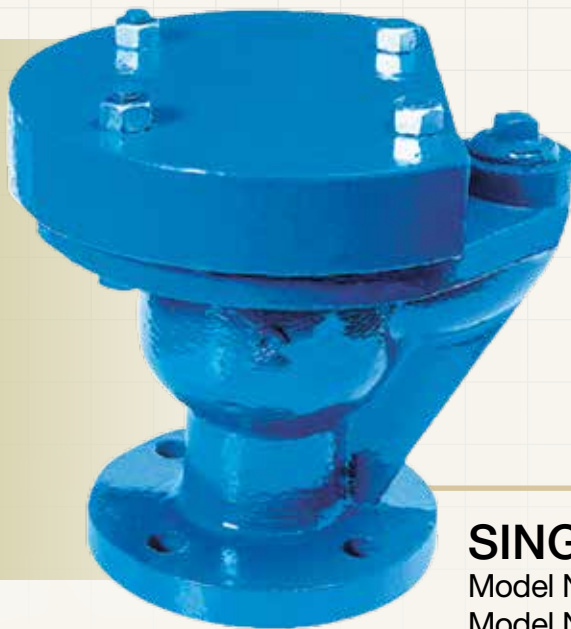


DOUBLE ORIFICE KINETIC & SINGLE LARGE ORIFICE



DOUBLE ORIFICE KINETIC

Model No. : 354 - Non-Isolating Type
Model No. : 355 - c/w Isolating Sluice Valve



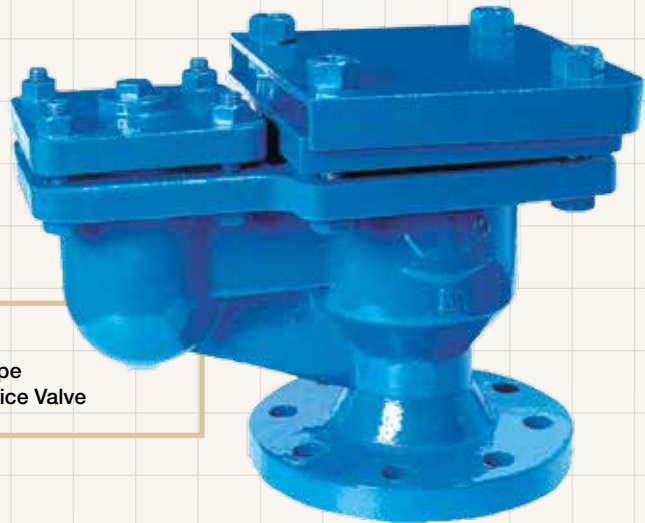
SINGLE LARGE ORIFICE

Model No. : 254 - Non-Isolating Type
Model No. : 255 - c/w Isolating Sluice Valve

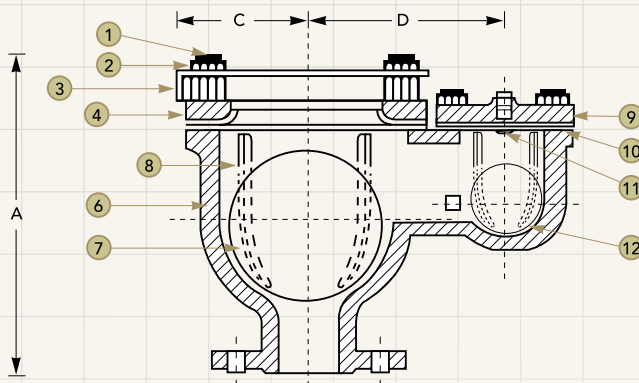


AIR VALVES

DOUBLE ORIFICE KINETIC



DOUBLE ORIFICE KINETIC
 Model No. : 354 - Non-Isolating Type
 Model No. : 355 - c/w Isolating Sluice Valve



MAXIMUM DIMENSION				
SIZE	A	C	D	B*
mm	mm	mm	mm	mm
50	275	90	220	170
80	275	110	235	190
100	310	110	260	230
150	400	135	295	280
200	540	165	375	450

B* - Width of air valve

DOUBLE ORIFICE KINETIC (ORIFICE BERKEMBAR KINETIK) (SMALL AND LARGE ORIFICE DOUBLE AIR VALVE)

NO	DESCRIPTION	MATERIAL	BS REF. NO.
1	BOLT	MILD STEEL	BS 4190 (MS 740)
2	NUTS	MILD STEEL	BS 4190 (MS 740)
3	LARGE ORIFICE COVER	DUCTILE IRON (EN-GJS-500-7)	BS EN 1563
4	LARGE ORIFICE PLATE	DUCTILE IRON (EN-GJS-500-7)	BS EN 1563
5	GASKET	EPDM RUBBER	BS EN 681
6	BODY	DUCTILE IRON (EN-GJS-500-7)	BS EN 1563
7	LARGE ORIFICE FLOAT (BALL)	ABS PLASTIC	ISO 2580
8	BALL GUIDE	DUCTILE IRON (EN-GJS-500-7)	BS EN 1563
9	SMALL ORIFICE PLATE	DUCTILE IRON (EN-GJS-500-7)	BS EN 1563
10	GASKET	EPDM RUBBER	BS EN 681
11	AIR RELEASE NIPPLE	BRASS (CZ116)	BS EN 12163
12	SMALL ORIFICE FLOAT (BALL)	ABS PLASTIC	ISO 2580

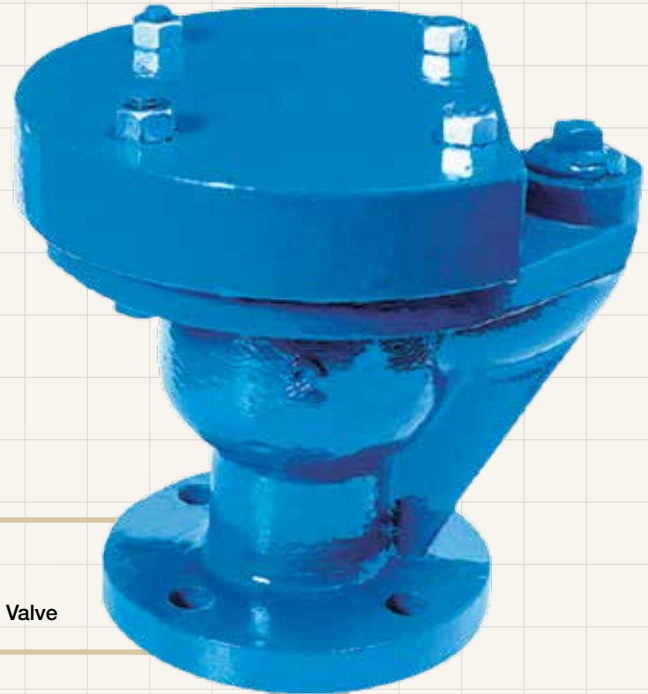
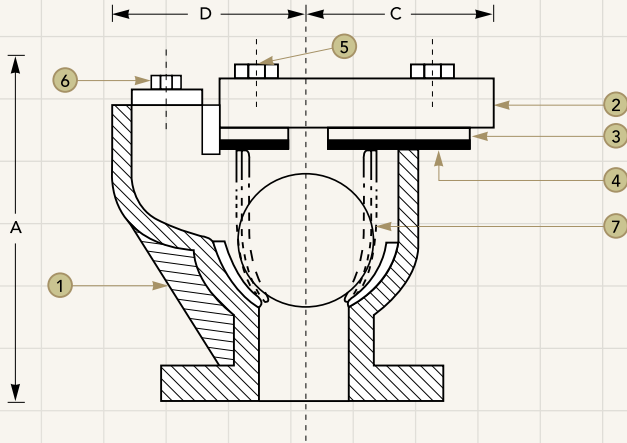


LYE MANUFACTURING SDN. BHD. (32836-H)
 Manufacturer of Valves, Hydrants, Joints, Fittings & Manhole Covers.



AIR VALVES

SINGLE LARGE ORIFICE



SINGLE LARGE ORIFICE

Model No. : 254 - Non-Isolating Type
 Model No. : 255 - c/w Isolating Sluice Valve

SIZE	MAXIMUM DIMENSION			
	A	C	D	B*
mm	mm	mm	mm	mm
50	275	165	165	215
80	275	165	165	245
100	305	185	185	270
150	400	265	265	305
200	530	325	325	400

B* - Width of air valve

SINGLE LARGE ORIFICE - TYPE B (ORIFICE BESAR TUNGGAL)

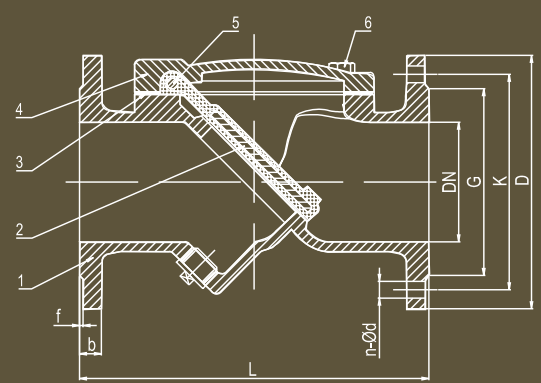
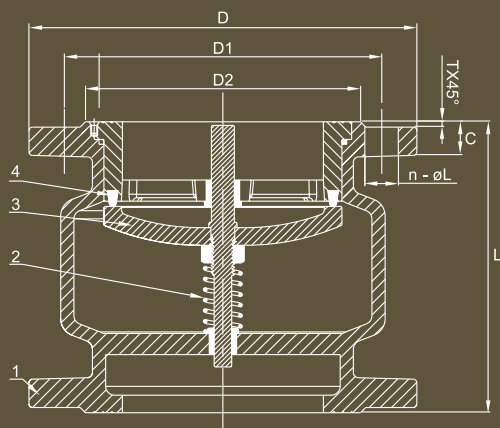
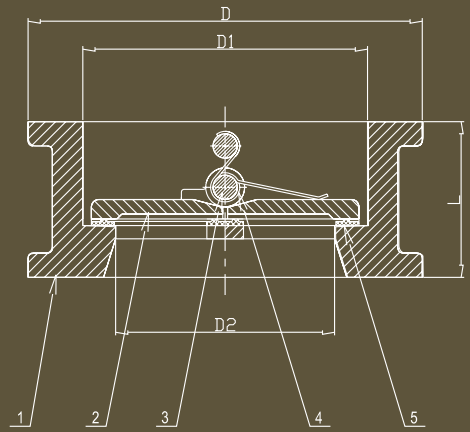
NO	DESCRIPTION	MATERIAL	BS REF. NO.
1	BODY	DUCTILE IRON (EN-GJS-500-7)	BS EN 1563
2	COVER	DUCTILE IRON (EN-GJS-500-7)	BS EN 1563
3	PLATE	DUCTILE IRON (EN-GJS-500-7)	BS EN 1563
4	GASKET	EPDM RUBBER	BS EN 681
5	BOLT AND NUTS	MILD STEEL	BS 4190 (MS 740)
6	PLUG	STAINLESS STEEL (304S31)	BS EN 10088-3
7	FLOAT (BALL)	ABS PLASTIC	ISO 2580

Please Note: Technical data provided is indicative only and may be subject to change without notice

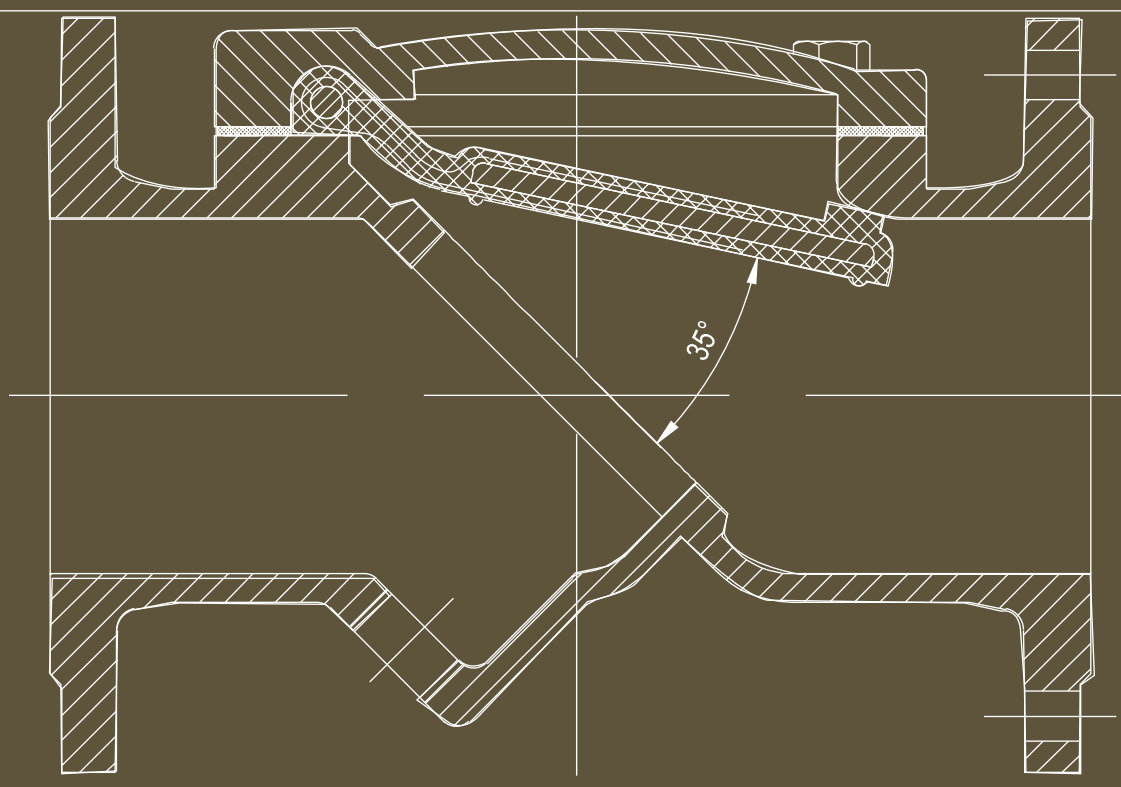


LYE MANUFACTURING SDN. BHD. (32836-H)
 Manufacturer of Valves, Hydrants, Joints, Fittings & Manhole Covers.





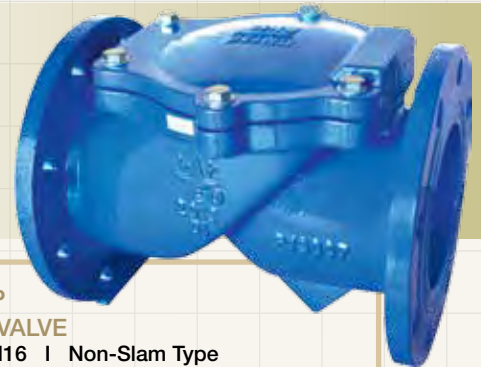
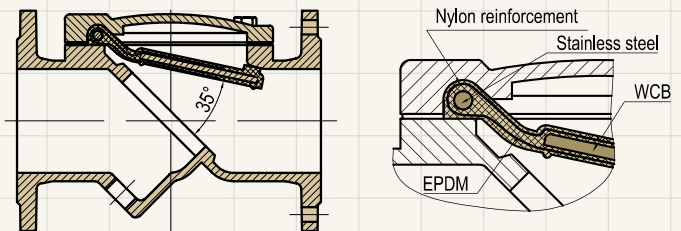
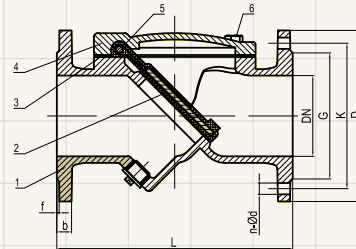
CHECK VALVES



CHECK VALVES

RUBBER FLAP TYPE CHECK VALVE

- LYE Ductile Iron Rubber Flap Type Check Valve (Non-Slam Type) is designed and manufactured conforming to BS EN 12334.
- The valve is of streamline design with only one moving part, the flexible disc, and body seat at a 45 degree angle to minimize disc travel.
- The disc is of one-piece construction, precision molded with an integral o-ring type sealing surface, and contain alloy steel and nylon reinforcement in the flexible hinge area. The flex portion of the disc shall be warranted for 25 years against tear-off.
- Non-Slam closing characteristics is provided through a short 35 degree disc stroke.
- Full size top access port with domed shape cover, allowing for removal of disc without removing the valve from the line.
- A threaded port with plug is provided in the bottom of the valve to allow for field installation of backflow actuator without removing the valve from the line.
- Fusion Bonded Epoxy coating is standard.



RUBBER FLAP TYPE CHECK VALVE
BS EN 12334 PN16 | Non-Slam Type

Main Parameter Specification

1	Design and manufacture: BN EN 12334
2	Pressure test: BS EN 12266
3	Flange dimension: BS EN 1092-2
4	Face to Face dimension: BS EN 558-1

Material for Main Parts

No	Description	Material	Grade
1	Body	Ductile Iron	EN-GJS-500-7
2	Flapper	Rubber + Alloy Steel	EPDM + WCB
3	Gasket	Rubber	EPDM
4	Bonnet	Ductile Iron	EN-GJS-500-7
5	Pin	Stainless Steel	SS316
6	Bolt	Stainless Steel	SS304

Specification

Nominal Pressure PN	16 Bar
Body Shell Testing Pressure PS	24 Bar
Seal Test Pressure PM	17.6 Bar
Working Pressure P	16 Bar
Working Temperature T	≤ 80°C
Suitable Medium	Water
Operating Test	From Fully Open to Fully Close Three Times

DN	L	D	K	G	b	f	n - Ød
50	203	165	125	99	19	3	4 - Ø19
65	216	185	145	118	19	3	4 - Ø19
80	241	200	160	132	19	3	8 - Ø19
100	292	220	180	156	19	3	8 - Ø19
125	330	250	210	184	19	3	8 - Ø19
150	356	285	240	211	19	3	8 - Ø23
200	495	340	295	266	20	3	12 - Ø28
250	655	405	355	319	22	3	12 - Ø28
300	698	480	410	370	24.5	4	12 - Ø28
350	787	520	470	429	28.5	4	16 - Ø28
400	914	580	525	480	28	4	16 - Ø31
450	965	640	585	548	30	4	20 - Ø31
500	978	715	650	609	31.5	4	20 - Ø34
600	1295	840	770	720	36	5	20 - Ø37
700	1448	910	840	794	39.5	5	24 - Ø37
800	1956	1025	950	901	43	5	24 - Ø39

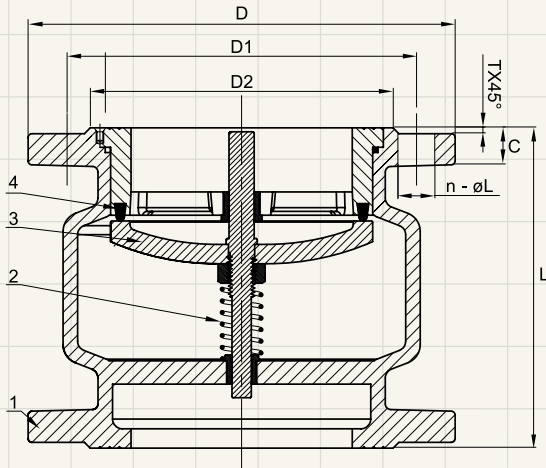
Please Note: Technical data provided is indicative only and may be subject to change without notice



LYE MANUFACTURING SDN. BHD. (32836-H)
Manufacturer of Valves, Hydrants, Joints, Fittings & Manhole Covers.



GLOBE SILENT CHECK VALVE



For liquid where protection from flow reversal in a pipeline is required.

- LYE Silent Check Valve is the valve of choice in applications where silent operation is of major concern. Its short linear stroke and spring return action automatically closes the disc at zero flow, which prevents flow reversal and water hammer.
- Guided spring loaded disc with drop tight closure.
- Designed for a minimum open area equal to 110% of the pipe size.
- Fusion bonded epoxy coating is standard.
- Can be used in both horizontal and vertical positions.

GLOBE SILENT CHECK VALVE

No	Part Name	Material
1	Body	Ductile Iron
2	Spring	Stainless Steel
3	Disc	Ductile Iron
4	Seat	EPDM

PN16

DN	Dimensions (mm)						
	L	D	D1	D2	C	T	n - ØL
50	120	165	125	99	19	3	4 - Ø19
65	135	185	145	118	19	3	4 - Ø19
80	155	200	160	132	19	3	8 - Ø19
100	165	220	180	156	19	3	8 - Ø19
150	210	285	240	211	19	3	8 - Ø23
200	260	340	295	266	20	3	12 - Ø23
250	285	405	355	319	22	3	12 - Ø28
300	315	460	410	370	24.5	4	12 - Ø28

Please Note: Technical data provided is indicative only and may be subject to change without notice

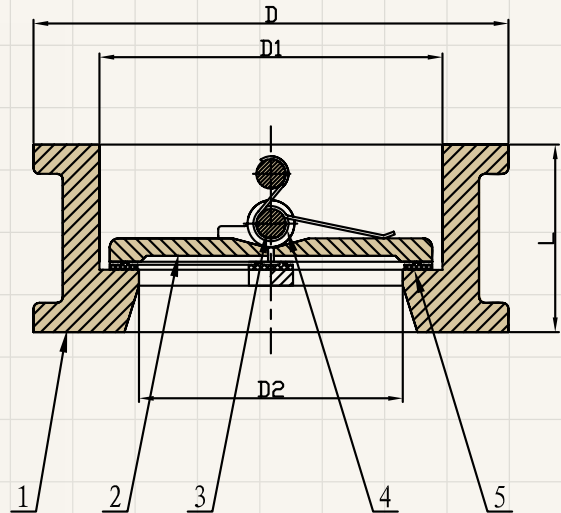


LYE MANUFACTURING SDN. BHD. (32836-H)
 Manufacturer of Valves, Hydrants, Joints, Fittings & Manhole Covers.



CHECK VALVES

DOUBLE DOOR WAFER CHECK VALVE



- Connection Ends: BS EN 1092 PN16, JIS B2212 10K, BS 10 TABLE E
- Working Pressure: PN16
- Temperature Range: 0°C - 80°C
- Coating: Fusion Bonded Epoxy Coating in accordance with ANSI/AWWA C550

MATERIAL SPECIFICATION

No.	Part	Standard Specification
1	Valve Body	Ductile Iron 500-7
2	Disc	SS304
3	Stem	SS420
4	Spring	SS304
5	Rubber Seat	EPDM

PN16

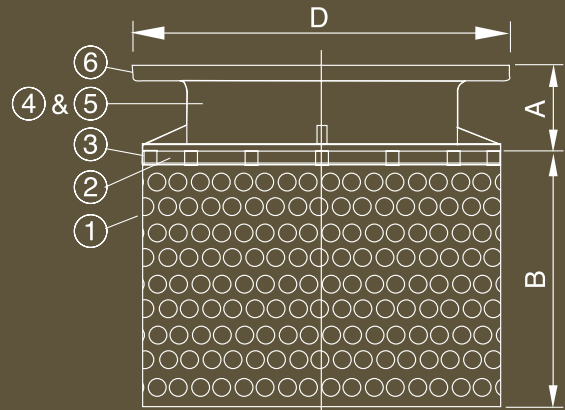
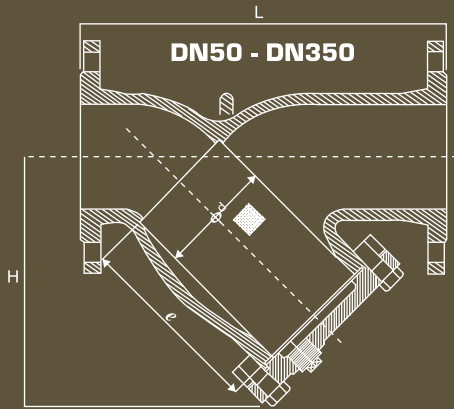
DN		Dimensions (mm)			
Inch	mm	L	D	D1	D2
2"	50	54	107	64	46
2.5"	65	54	127	78	60
3"	80	57	142	94	70
4"	100	64	162	117	84
5"	125	70	192	145	115
6"	150	76	218	170	134
8"	200	95	273	224	184
10"	250	108	328	265	220
12"	300	143	378	310	260
14"	350	184	438	360	302
16"	400	191	489	410	350

Please Note: Technical data provided is indicative only and may be subject to change without notice

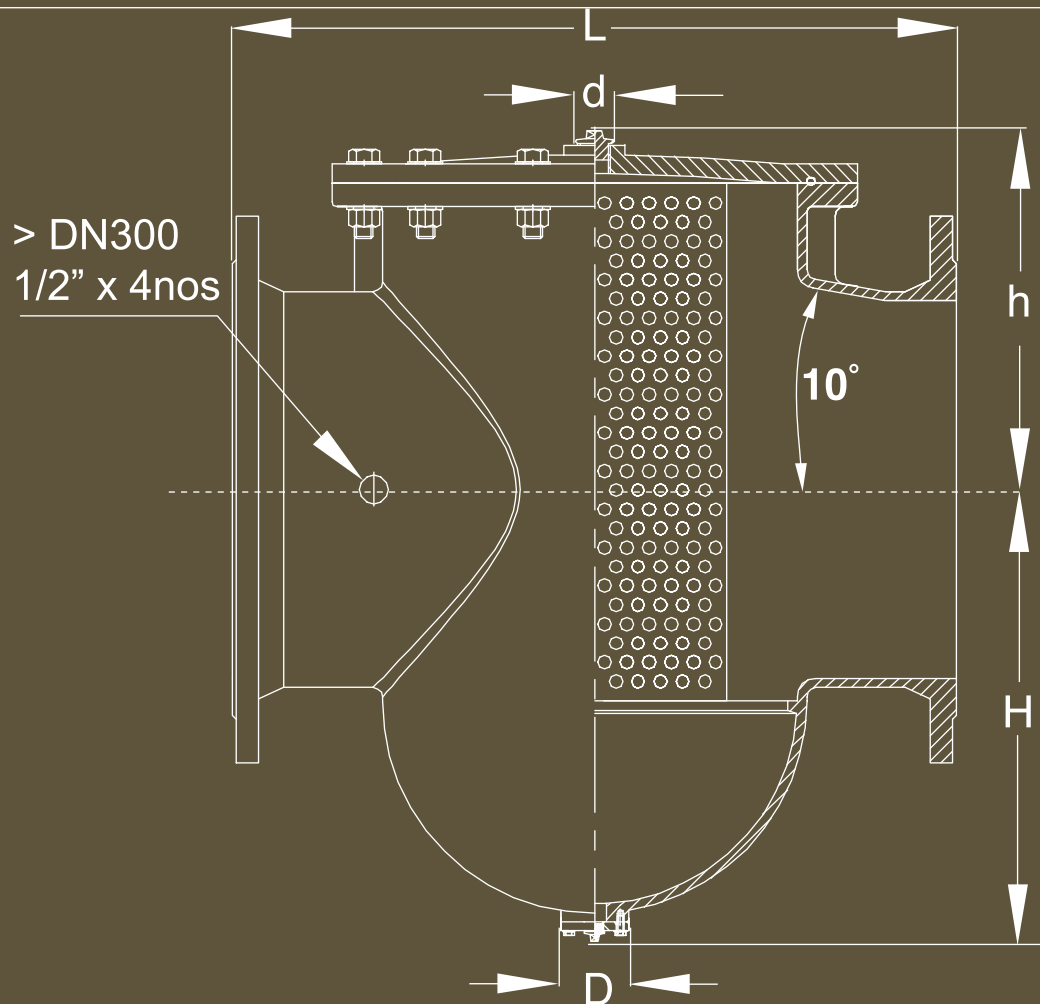


LYE MANUFACTURING SDN. BHD. (32836-H)
 Manufacturer of Valves, Hydrants, Joints, Fittings & Manhole Covers.



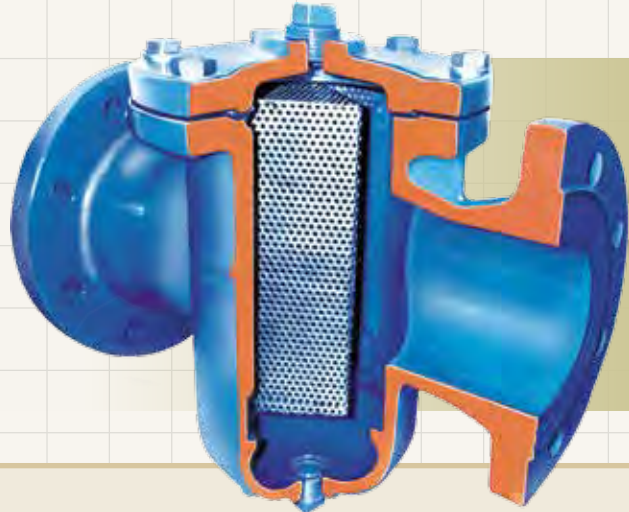
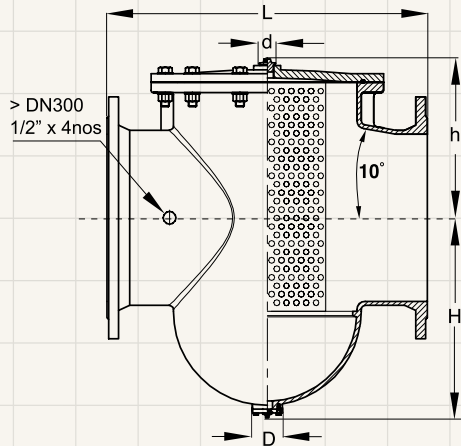


STRAINERS



STRAINERS

T-POT STRAINER



INTRODUCTION

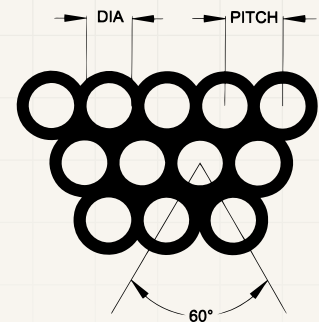
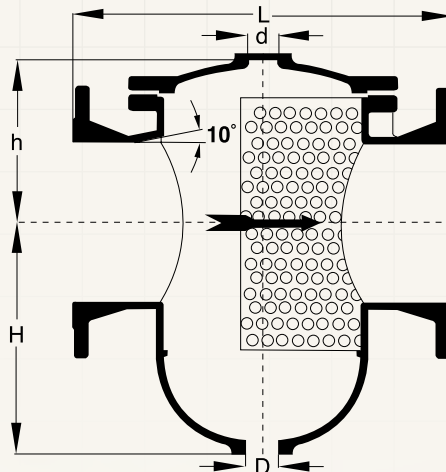
LYE T-POT STRAINER is a well-designed product that could effectively reduce the maintenance costs of water meter by preventing solid materials and debris that can damage the meter in the pipeline system.

PRODUCT ADVANTAGES

- It increases the life span of water meters.
- It reduce the maintenance cost of water meters.
- It improves the reticulation for bulk meter system.

SPECIAL FEATURES

- The design allows installation of air release valve, thus stop water meter form over – register due to air bubbles.
- Any dirt or debris accumulated can be flushed out though the drain plug.
- Special designed Perforated Stainless Steel Screen for minimum cleaning.



LYE MANUFACTURING SDN. BHD. (32836-H)
 Manufacturer of Valves, Hydrants, Joints, Fittings & Manhole Covers.



STRAINERS

T-POT STRAINER

MATERIALS:

Parts	Material	Standard Ref.	Grade
Body & Cover	Ductile Iron	BS EN 1563	EN-GJS-500/7
Screen	Stainless Steel	BS EN 10088-3	304S31
Gasket	Rubber	MS 672, BS EN 681	EPDM
Gasket	Rubber	MS 672, BS EN 681	EPDM
Bolt	Stainless Steel	BS EN 10088-3	304S31
	Mild Steel (Hot dip Galvanized)	BS 4190	-
Drain Plug	Stainless Steel	BS EN 10088-3	304S31

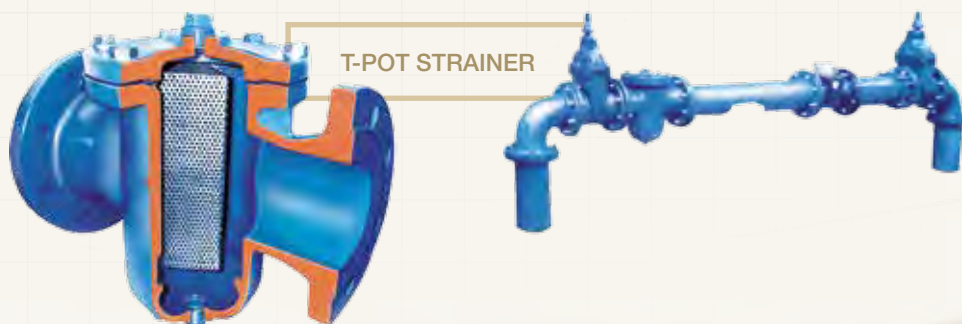
DIMENSIONS:

Nominal Size	Dimensions					Weight (kg)
	L	H	h	D	d	
DN 80	300	150	125	25	25	22
DN 100	340	170	138	25	25	27
DN 150	420	220	170	25	25	44
DN 200	480	290	200	40	40	68
DN 250	586	332	245	32	25	116
DN 300	658	375	275	32	25	193
DN 350	698	430	350	32	25	305
DN 400	768	480	380	32	25	368
DN 450	838	525	410	32	25	490
DN 500	908	565	480	32	25	715
DN 600	1070	700	550	32	25	934
DN 700	1240	750	590	32	25	1275
DN 800	1380	900	660	32	25	1600
DN 900	1520	960	760	32	25	1976

MATERIAL SPECIFICATION

Nominal Size	Dimensions (mm)
DN 80 - DN 200	Diameter = 3.0mm Pitch = 5.0mm
	Thickness = 1.0mm
	Diameter = 5.0mm Pitch = 8.0mm
DN 250 - DN 900	Thickness = 1.0mm

Please Note: Technical data provided is indicative only and may be subject to change without notice

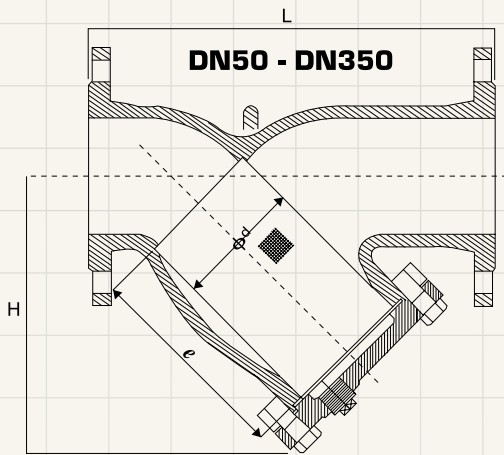


LYE MANUFACTURING SDN. BHD. (32836-H)
 Manufacturer of Valves, Hydrants, Joints, Fittings & Manhole Covers.



STRAINERS

Y-STRAINER



Y-STRAINER
Model No. : LYE 881

- Working pressure : 16 Bars
- Shell test pressure : 24 Bars
- Working temperature : < 100 °C
- Media : Water, Oil
- Flanges designed and drilled according to BS EN1092-2 Table 9

DIMENSIONS: MM

Size	DN50	DN65	DN80	DN100	DN125	DN150	DN200	DN250	DN300	DN350
L	225	273	293	352	390	470	543	660	762	949
H	150	207	225	236	260	319	416	484	555	735
Φ^d	56	78	88	110	140	170	210	270	320	370
e	114	179	185	184	200	244	330	400	455	645

MATERIAL FOR MAIN PARTS

Parts	Material	Standard Ref.	Grade
Body	Ductile Iron	BS EN 1563	EN-GJS-500-7
Cover	Ductile Iron	BS EN 1563	EN-GJS-500-7
Gasket	Stainless Steel	BS EN 10088-3	304S31
Blot	Mill Steel	BS4190	Hot Dipped Galvanised
Frain Plug	Stainless Steel	BS EN 10088-3	304S31
Gasket	Rubber	MS 672, BS EN 681	EPDM

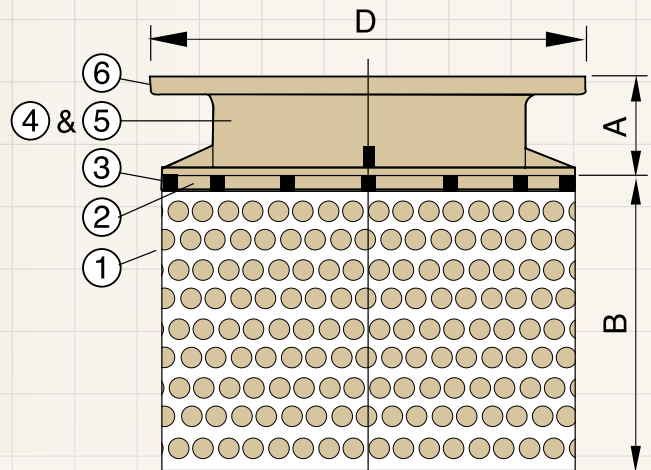
Please Note: Technical data provided is indicative only and may be subject to change without notice



LYE MANUFACTURING SDN. BHD. (32836-H)
Manufacturer of Valves, Hydrants, Joints, Fittings & Manhole Covers.



ROSE STRAINER



No.	Part Name	Material
1	Screen & Frame	SS304
2	Steel Belt	SS304
3	Bolts	SS304
4	Body	Ductile Iron
5	Coating	Fusion Bonded Epoxy
6	Flange	Drill to BS EN 1092-2

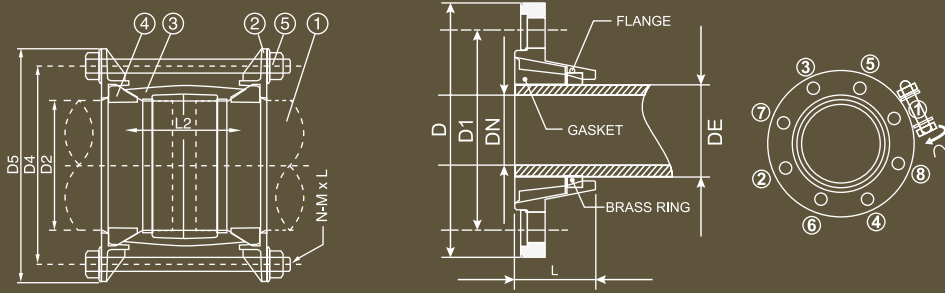
DN	B	D	A	FLANGE
100	100	220	80	PN 16
150	150	285	80	PN 16
200	200	340	100	PN 16
250	250	405	100	PN 16
300	300	455	120	PN 16
350	350	520	120	PN 16
400	400	580	125	PN 16
450	450	640	130	PN 16
500	500	715	140	PN 16
600	600	840	150	PN 16
700	700	910	160	PN 16
800	800	1025	170	PN 16

Please Note: Technical data provided is indicative only and may be subject to change without notice

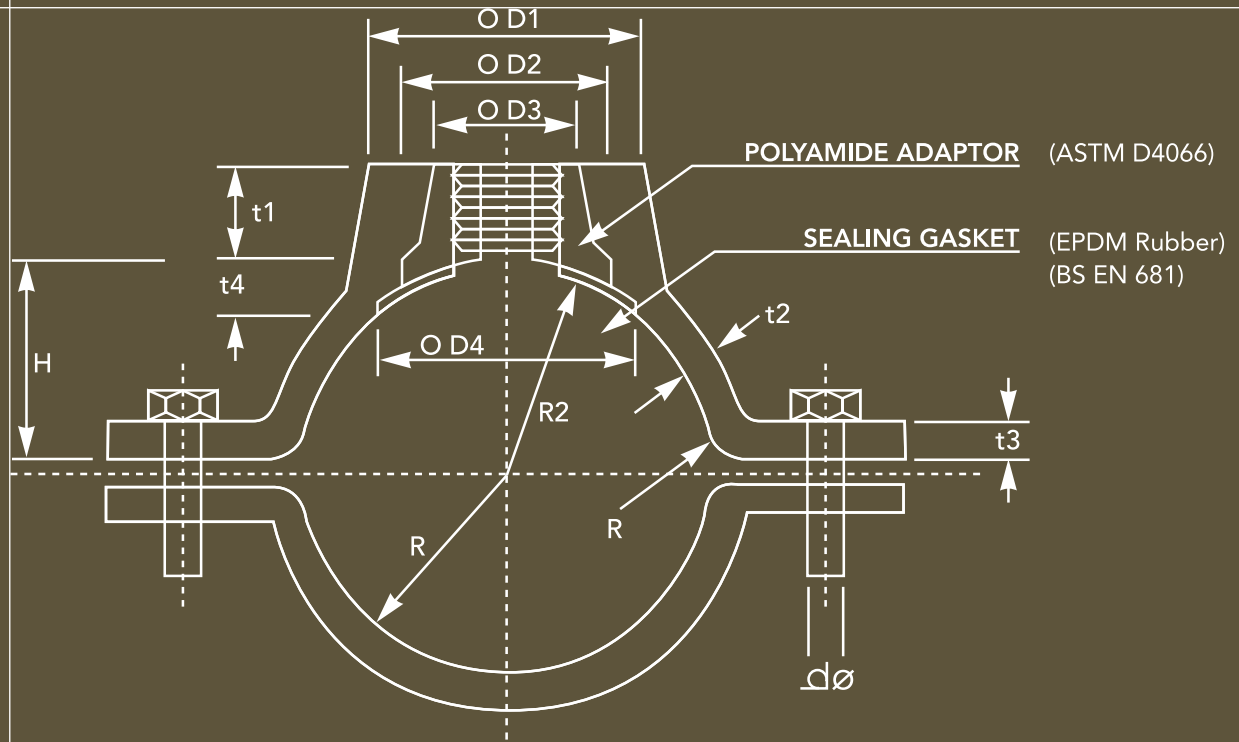


LYE MANUFACTURING SDN. BHD. (32836-H)
 Manufacturer of Valves, Hydrants, Joints, Fittings & Manhole Covers.

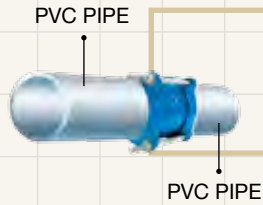




JOINTS & SADDLES



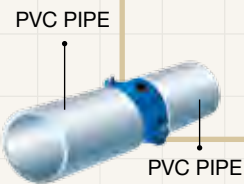
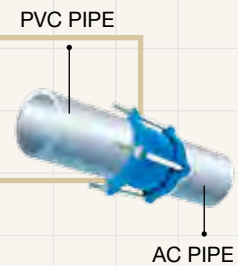
DETACHABLE JOINT & VARIABLE ADAPTOR & FERROUS SADDLE



DETACHABLE JOINT
D.J.-FOR UPVC PIPE



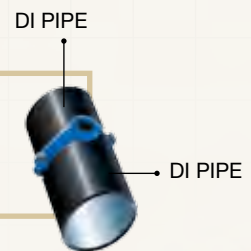
VARIABLE ADAPTOR
V.A.-FOR UPVC TO AC PIPE



FERROUS SADDLE
(FOR PVC PIPE)



FERROUS SADDLE
(FOR AC OR DI PIPE)



LYE MANUFACTURING SDN. BHD. (32836-H)
Manufacturer of Valves, Hydrants, Joints, Fittings & Manhole Covers.

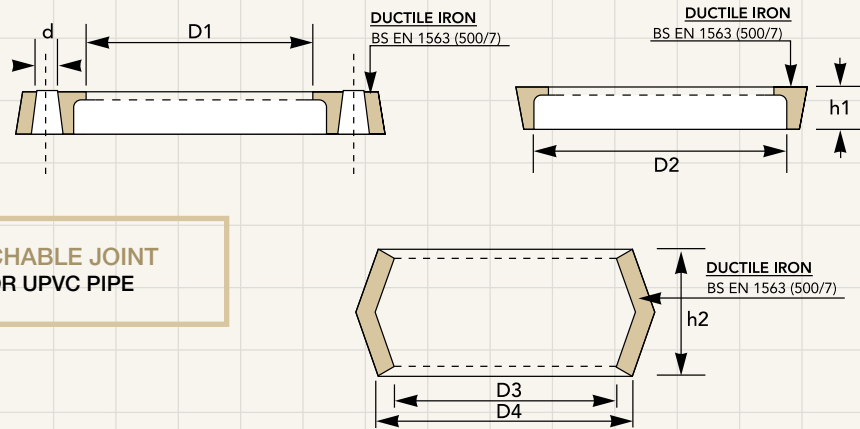


JOINTS & SADDLES

DETACHABLE JOINT & VARIABLE ADAPTOR



**DETACHABLE JOINT
D.J.-FOR UPVC PIPE**

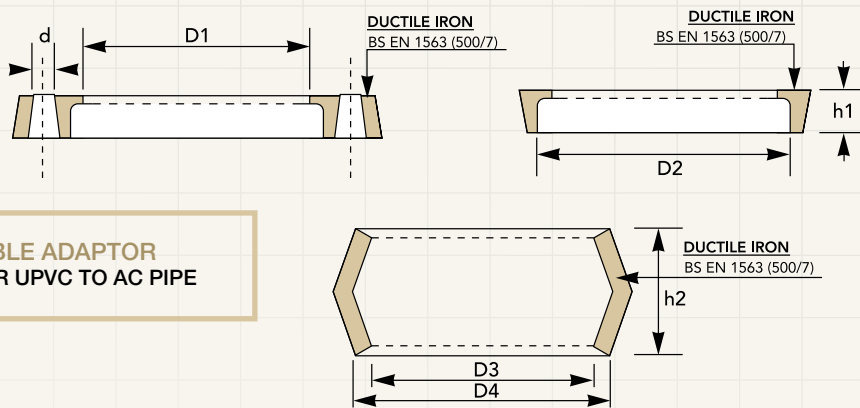


DUCTILE IRON (S.G.) DETACHABLE JOINT (D.J.)

UPVC PIPE		FLANGE				SLEEVE			No. of Bolts	Dia. of Bolts
Nominal Size	O.D.	D1	D2	d	h1	D3	D4	h2		
80	89.1	93 ± 1	109 ± 1	14 ± 1	28 ± 1	93 ± 1	104 ± 1	100 ± 1	4	12
100	114.5	117 ± 1	134 ± 1	14 ± 1	31 ± 1	117 ± 1	129 ± 1	110 ± 1	4	12
150	168.5	173 ± 1	192 ± 1	14 ± 1	32 ± 1	173 ± 1	186 ± 1	130 ± 1	4	12
200	219.4	224 ± 2	245 ± 2	18 ± 2	36 ± 2	224 ± 2	239 ± 2	150 ± 2	4	16
250	273.4	278 ± 2	300 ± 2	18 ± 2	41 ± 2	278 ± 2	294 ± 2	165 ± 2	4	16
300	324.3	329 ± 2	353 ± 2	18 ± 2	42 ± 2	329 ± 2	346 ± 2	170 ± 2	5	16



**VARIABLE ADAPTOR
V.A.-FOR UPVC TO AC PIPE**



DUCTILE IRON (S.G.) VARIABLE ADAPTOR (V.A.) (TYPE D)

AC PIPE		FLANGE				SLEEVE			No. of Bolts	Dia. of Bolts
Nominal Size	O.D.	D1	D2	d	h1	D3	D4	h2		
80	95.6	100 ± 1	117 ± 1	14 ± 1	22 ± 1	100 ± 1	112 ± 1	100 ± 1	4	12
100	121.9	127 ± 2	145 ± 2	14 ± 1	28 ± 1	127 ± 1	140 ± 1	110 ± 1	4	12
150	177.3	182 ± 1	208 ± 1	14 ± 1	28 ± 1	182 ± 1	196 ± 1	130 ± 1	4	12
200	232.2	238 ± 2	260 ± 2	18 ± 2	32 ± 2	238 ± 2	254 ± 2	150 ± 2	4	16
250	286.0	291 ± 2	314 ± 2	18 ± 2	32 ± 2	291 ± 2	308 ± 2	165 ± 2	4	16
300	345.4	352 ± 2	376 ± 2	18 ± 2	40 ± 2	352 ± 2	370 ± 2	170 ± 2	5	16



LYE MANUFACTURING SDN. BHD. (32836-H)
Manufacturer of Valves, Hydrants, Joints, Fittings & Manhole Covers.



JOINTS & SADDLES

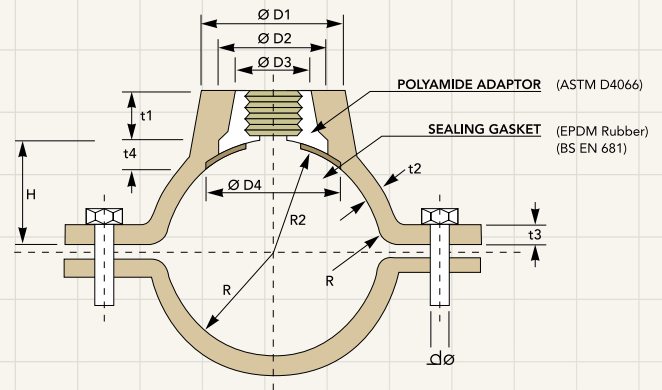
FERROUS SADDLE



**FERROUS SADDLE
(FOR PVC PIPE)**



**FERROUS SADDLE
(FOR AC OR DI PIPE)**



DUCTILE IRON (S.G.) FERROUS SADDLE (FOR PVC PIPE)

DIMENSIONS OF TYPE B						DUCTILE IRON (SG.) SADDLE (D1)								
Nominal Size DN	R	R2	BOLT			D1	D2	D3	D4	t1	t2	t3	t4	H
			Hole.d	Size X Lenght	No.									
						Min. Value	Min. Value	Min. Value	Min. Thick	Min. Thick	Min. Thick	Min. Thick	Min. Thick	
80	47	53	16	M12 x 76	2	72	52	44	65	16	6	8	6	38
100	60	53	16	M12 x 76	2	72	52	44	65	16	6	10	6	48
150	86	94	16	M12 x 76	2	72	52	44	65	16	7	11	8	68
200	112	94	16	M12 x 76	2	72	52	44	65	18	7	12	8	96
250	140	94	16	M12 x 76	2	72	52	44	65	19	7	12	8	122
300	165.5	94	16	M12 x 76	2	72	52	44	65	22	7	12	8	150

DUCTILE IRON (S.G.) FERROUS SADDLE (FOR AC / DI PIPE)

DIMENSIONS OF TYPE A						DUCTILE IRON (SG.) SADDLE (D1)								
Nominal Size DN	R	R2	BOLT			D1	D2	D3	D4	t1	t2	t3	t4	H
			Hole.d	Size X Lenght	No.									
						Min. Value	Min. Value	Min. Value	Min. Thick	Min. Thick	Min. Thick	Min. Thick	Min. Thick	
80	49	53	15	M12 x 76	2	72	52	44	65	11	4	12	6	40
100	63	53	15	M12 x 76	2	72	52	44	65	11	4.5	13	7	48
150	90	94	18	M12 x 76	2	72	52	44	65	11	5	13	7	68
200	118	94	18	M12 x 76	2	72	52	44	65	11	5	14	7	96
250	145	94	18	M12 x 76	2	72	52	44	65	11	5.5	14	8	122
300	175	94	18	M12 x 76	2	72	52	44	65	11	5.5	14	8	150

Please Note: Technical data provided is indicative only and may be subject to change without notice



LYE MANUFACTURING SDN. BHD. (32836-H)
 Manufacturer of Valves, Hydrants, Joints, Fittings & Manhole Covers.

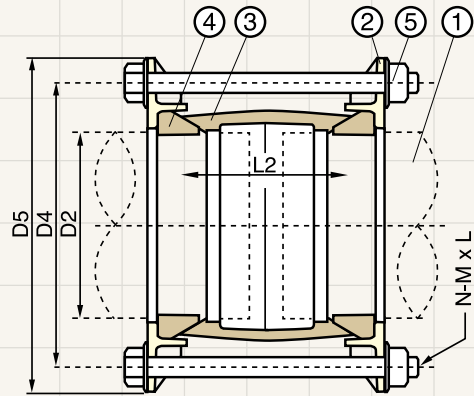


MECHANICAL JOINT FOR DI PIPE

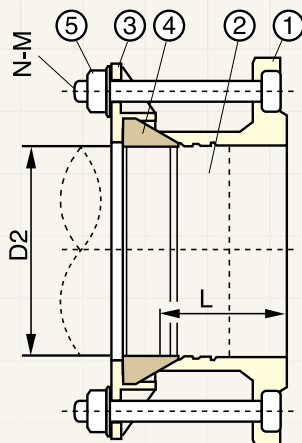
COUPLING & FLANGE ADAPTOR



MECHANICAL COUPLING



NO	PART NAME
1	PIPE
2	GLAND
3	SLEEVE
4	RUBBER GASKET
5	BOLT AND NUT



NO	PART NAME
1	SLEEVE
2	PIPE
3	GLAND
4	RUBBER GASKET
5	STUD BOLT



MECHANICAL FLANGE ADAPTOR



JOINTS & SADDLES

MECHANICAL JOINT FOR DI PIPE | COUPLING & FLANGE ADAPTOR

MATERIAL SPECIFICATION

BOLT & NUT	HOT DIPPED GALVANIZED	BS 4190
SLEEVE	DUCTILE IRON (EN-GJS-500-7)	BS EN 1563
GLAND	DUCTILE IRON (EN-GJS-500-7)	BS EN 1563
RUBBER GASKET	EPDM	BS EN 681
COATING	FUSION BONDED EPOXY	-

MECHANICAL COUPLING

Dimension in mm

DN	D2	D4	D5	L2	M	N	L
80	98	158	188	100	1/2"	4	175
100	118	182	212	100	1/2"	4	175
150	170	237	267	100	1/2"	4	175
200	222	292	322	100	1/2"	4	175
250	274	345	375	100	1/2"	6	175
300	326	396	426	100	1/2"	6	175
350	378	460	498	150	5/8"	8	230
400	429	515	553	150	5/8"	8	230
450	480	565	603	150	5/8"	10	230
500	532	620	658	150	5/8"	10	230
600	635	725	763	150	5/8"	10	230
700	738	840	878	150	5/8"	12	230
800	842	950	988	150	5/8"	12	230

MECHANICAL FLANGE ADAPTOR

Dimension in mm

DN	D2	n	M	L	FLANGE STANDARD
80	98	4	1/2"	70	PN10+PN16 + TABLE E
100	118	4	1/2"	70	PN10+PN16 + TABLE E
150	170	4	1/2"	75	PN10+PN16 + TABLE E
200	222	4	1/2"	75	PN10+PN16 + TABLE E
250	274	6	1/2"	90	PN10+PN16 + TABLE E
300	326	6	1/2"	90	PN10+PN16 + TABLE E
350	378	8	1/2"	100	PN16
400	429	8	1/2"	100	PN16
450	480	10	1/2"	100	PN16
500	532	10	1/2"	100	PN16
600	635	10	1/2"	100	PN16
700	738	12	1/2"	100	PN16
800	842	12	1/2"	100	PN16

Please Note: Technical data provided is indicative only and may be subject to change without notice



LYE MANUFACTURING SDN. BHD. (32836-H)
 Manufacturer of Valves, Hydrants, Joints, Fittings & Manhole Covers.



JOINTS & SADDLES

UNIVERSAL JOINT

STRAIGHT COUPLING & FLANGE ADAPTOR



STRAIGHT COUPLING

Brand	LYE
Sizes Available	80mm - 300mm
Material	Ductile Iron (S.G.)
Max. Working Pressure	16 Bars
Setting Gap	20mm - 30mm
Angular Deflection	6 Degrees
Bolts and Nuts	Hot-Dip Galvanized
Coating	Epoxy (Blue)
Rubber Gasket	EPDM Rubber

NORMAL DIAMETER	NORMAL DIAMETER RANGE (MM)	TYPE OF PIPES
3" / 80mm	89 ~ 99	uPVC, DI, CI, AC, Steel
4" / 100mm	114 ~ 126	uPVC, DI, CI, AC, Steel
6" / 150mm	168 ~ 179	uPVC, DI, CI, AC, Steel
8" / 200mm	219 ~ 234	uPVC, DI, CI, AC, Steel
10" / 250mm	273 ~ 286	uPVC, DI, CI, AC, Steel
12" / 300mm	324 ~ 334	uPVC, DI, CI, AC, Steel

Brand	LYE
Sizes Available	80mm - 300mm
Material	Ductile Iron (S.G.)
Max. Working Pressure	16 Bars
Setting Gap	10mm - 35mm
Angular Deflection	6 Degrees
Bolts and Nuts	Hot-Dip Galvanized
Coating	Epoxy (Blue)
Rubber Gasket	EPDM Rubber

NORMAL DIAMETER	NORMAL DIAMETER RANGE (MM)	TYPE OF PIPES
3" / 80mm	89 ~ 99	uPVC, DI, CI, AC, Steel
4" / 100mm	114 ~ 126	uPVC, DI, CI, AC, Steel
6" / 150mm	168 ~ 179	uPVC, DI, CI, AC, Steel
8" / 200mm	219 ~ 234	uPVC, DI, CI, AC, Steel
10" / 250mm	273 ~ 286	uPVC, DI, CI, AC, Steel
12" / 300mm	324 ~ 334	uPVC, DI, CI, AC, Steel



FLANGE ADAPTOR

Please Note: Technical data provided is indicative only and may be subject to change without notice



LYE MANUFACTURING SDN. BHD. (32836-H)
 Manufacturer of Valves, Hydrants, Joints, Fittings & Manhole Covers.



POLY RESTRAINT JOINT



LYE POLY RESTRAINT COUPLING

MODEL NO. : LYE 785

LYE POLY RESTRAINT FLANGE ADAPTOR

MODEL NO. : LYE 786



The LYE Poly Restraint Couplings and Flange Adaptors, designed specifically for use on Polyethylene pipes, is a self-anchoring unit mechanically fitted to pipe ends. Applicable in all environments, these LYE Poly Restraint Joints is another product to enhance piping systems.

FEATURES & BENEFITS

Full range available DN 63 – DN 315

- Couplings and flange adaptors are available.
- Full pressure rating. (up to 16 Bars)

Easy to fit

- No special tools required for installation.
- All weather installation, even under water.

Outstanding protection from corrosion

- The LYE Poly Restraint Couplings and Flange Adaptors are coated in Fusion Bonded Epoxy (FBE) which makes it well equipped to withstand any storage, site and corrosion damage.

Please Note: Technical data provided is indicative only and may be subject to change without notice

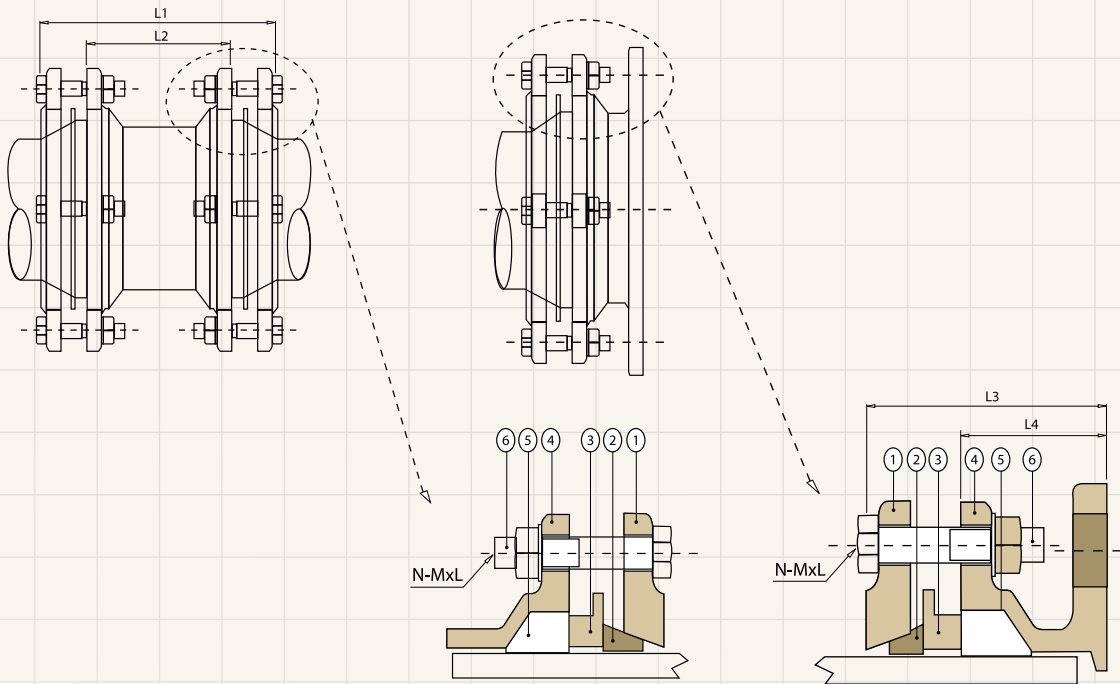


LYE MANUFACTURING SDN. BHD. (32836-H)
Manufacturer of Valves, Hydrants, Joints, Fittings & Manhole Covers.



JOINTS & SADDLES

POLY RESTRAINT JOINT



MATERIAL FOR MAIN PARTS

No	Description	Material	Grade
1	End Ring	Ductile Iron	500/7
2	Grip Ring	Stainless Steel/Brass	304S31
3	Intermediate Ring	Ductile Iron	500/7
4	Body	Ductile Iron	500/7
5	Gasket	Rubber	EPDM
6	Bolts & Nuts	Galvanized Steel	A3

OVERALL DIMENSIONS FOR LYE POLY RESTRAINT COUPLINGS & FLANGE ADAPTORS

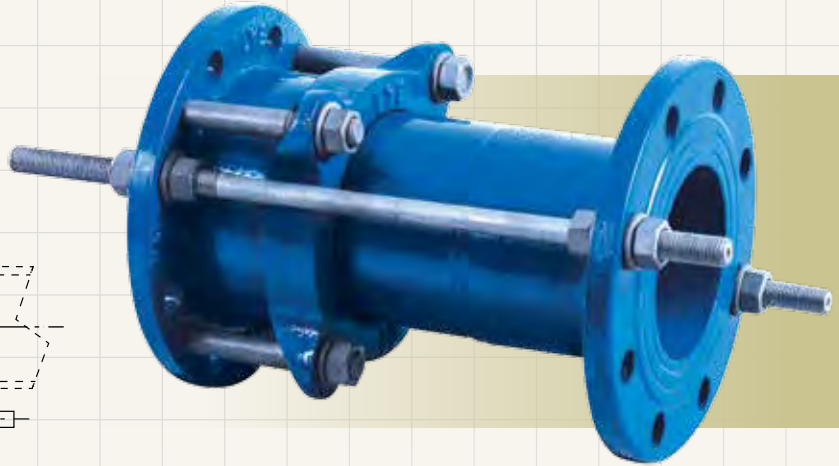
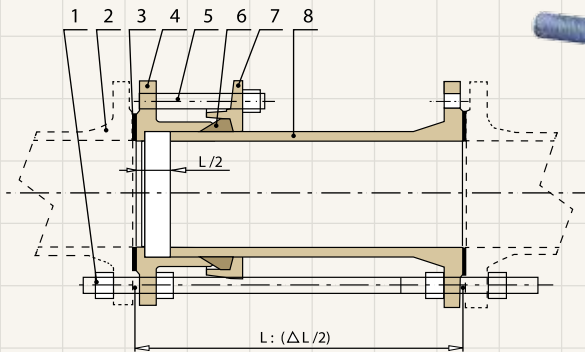
LYE Poly Restraint Couplings			LYE Poly Restraint Flange Adaptors			Flange Information				
DN	L1 (mm)	L2 (mm)	DN	L3 (mm)	L4 (mm)	DN	PN10/16	BS10/D	BS10/E	ANSI/150
63	232	130	63	116	65	80	*			*
90	242	140	90	121	70	80	*			*
110	250	146	110	125	73	100	*	*	*	*
125	254	150	125	162	110	100	*	*	*	*
160	294	174	160	150	90	150	*			*
180	300	180	180	185	125	150	*			*
225	321	200	225	185	125	200	*	*	*	*
250	338	200	250	199	130	250	*		*	*
280	338	200	280	209	140	250	*		*	*
315	348	210	315	219	150	300	*			*



LYE MANUFACTURING SDN. BHD. (32836-H)
 Manufacturer of Valves, Hydrants, Joints, Fittings & Manhole Covers.



FLANGED DISMANTLING JOINT



The LYE Flanged Dismantling Joint is a double-flanged fitting that allows longitudinal adjustment in flanged pipe systems.

When fitting valves and equipment there is often a problem bridging the gap between two mating flanges. This system gives an axial movement to accommodate such a problem. It provides adjustability to your equipment installations by combining a Flanged Coupling Adaptor and a Flanged Spigot into one assembly. Longitudinal adjustment is provided by the telescoping action of the Spigot inside the Flanged Coupling Adaptor. When final installation position is achieved, the bolting procedure for the Flanged Coupling Adaptor and the Flanged Spigot can be completed.

FEATURES & BENEFITS

Full range available DN80 - DN600

- For application where a full-face flange is required i.e. wafer type valves, the flange of the spigot piece provides a full flange sealing area.

LONGITUDINAL ADJUSTMENT

- Accommodates up to 50mm/2" longitudinal adjustment.
- Can be locked at required length with tie bars supplied.
- Allows for fast and simple maintenance of valves and pumps.
- No need for complex anchoring systems.

OUTSTANDING PROTECTION FROM CORROSION

- The LYE Flanged Dismantling Joint is coated in Fusion Bonded Epoxy (FBE) which makes it well equipped to withstand any storage, site and corrosion damage.

MATERIALS FOR MAIN PARTS

No	Description	Material	Grade
1	Bolts & Nuts	Galvanized Steel	A3
2	Flange	-	-
3	Rubber Seal	Rubber	EPDM
4	Flange Adaptor	Ductile Iron	500 / 7
5	Bolts & Nuts	Galvanized Steel	A3
6	Rubber Ring	Rubber	EPDM
7	Gland	Ductile Iron	500 / 7
8	Flange Spigot	Ductile Iron	500 / 7

OVERALL DIMENSIONS FOR LYE FLANGED DISMANTLING JOINT

DN	Length (mm)	L-Adjust Length (mm)	Flange Standard	OD
80	300	50	PN16	98
100	300	50	PN16	118
150	450	50	PN16	170
200	600	50	PN16	222
250	600	50	PN16	274
300	600	50	PN16	326
350	600	50	PN16	378
400	600	50	PN16	429
450	600	50	PN16	480
500	600	50	PN16	532
600	600	50	PN16	635

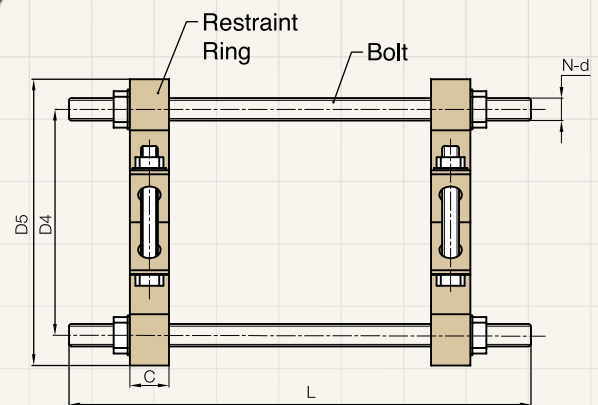
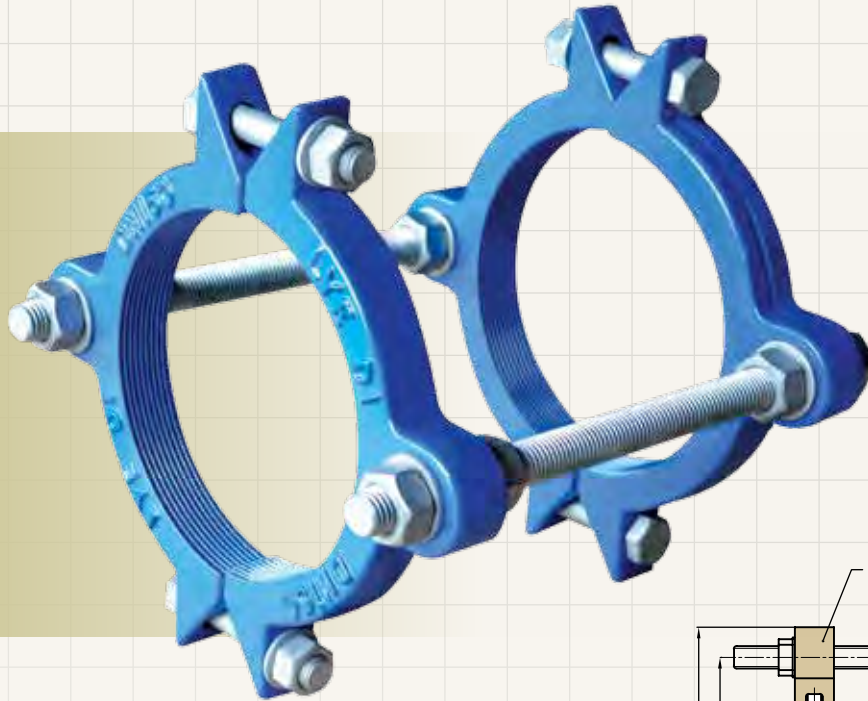
Please Note: Technical data provided is indicative only and may be subject to change without notice



LYE MANUFACTURING SDN. BHD. (32836-H)
 Manufacturer of Valves, Hydrants, Joints, Fittings & Manhole Covers.



PUSH-ON JOINT RESTRAINT HARNESS



THE LYE PUSH-ON JOINT RESTRAINT HARNESS IS DESIGNED FOR RESTRAINING OF SOCKET PUSH-ON JOINTS OF DUCTILE IRON PIPELINES.

DN	D4	D5	C	N-d	L
80	161	204	28	2-M16	280
100	184	227	28	2-M16	290
150	240	291	28	2-M20	310
200	301	352	28	2-M20	320
250	360	412	30	4-M20	330
300	417	469	32	4-M20	345

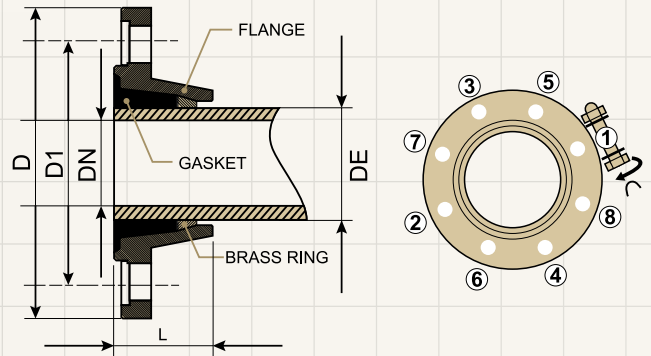
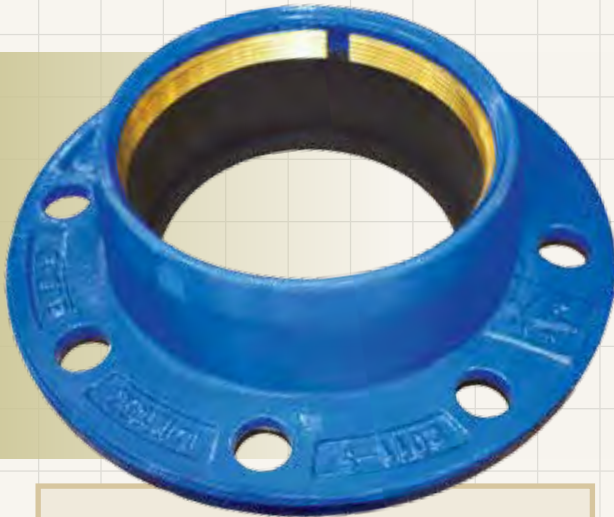
Please Note: Technical data provided is indicative only and may be subject to change without notice



LYE MANUFACTURING SDN. BHD. (32836-H)
 Manufacturer of Valves, Hydrants, Joints, Fittings & Manhole Covers.

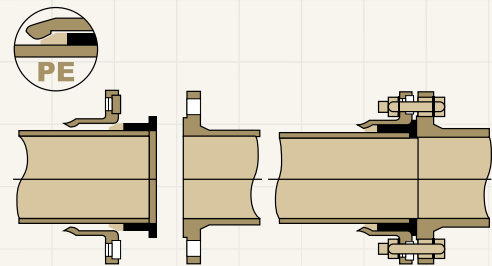
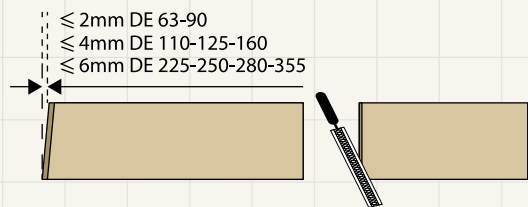


PE QUICK FLANGE ADAPTOR



FEATURES:

- LYE Ductile Iron PE Quick Flange Adaptor consists of a ductile iron flange with EPDM gasket and restraining brass ring.
- LYE Ductile Iron PE Quick Flange Adaptor is easy to install and once coupled to a mating flange, the brass restraint ring will grip tightly to the PE pipe.
- Thus preventing pipe dislodge.



DN	DE	D		L	D1		n-d	
		PN 10	PN 16		PN 10	PN 16	PN 10	PN 16
DN 60/65	63	185	185	53	135/145	135/145	4*19	4*19
DN 80	90	200	200	61	160	160	8*19	8*19
DN 100	110	220	220	67	180	180	8*19	8*19
DN 125	125	250	250	70	210	210	8*19	8*19
DN 150	180	285	285	79	240	240	8*23	8*23
DN 200	200	340	340	91	295	295	8*23	12*23
DN 200	225	340	340	91	295	295	8*23	12*23
DN 250	250	400	400	95	350	355	12*23	12*28
DN 250	280	400	400	95	350	355	12*23	12*28
DN 300	315	455	455	105	400	410	12*23	12*28
DN 300	355	455	455	105	400	410	12*23	12*28

Please Note: Technical data provided is indicative only and may be subject to change without notice



LYE MANUFACTURING SDN. BHD. (32836-H)
 Manufacturer of Valves, Hydrants, Joints, Fittings & Manhole Covers.

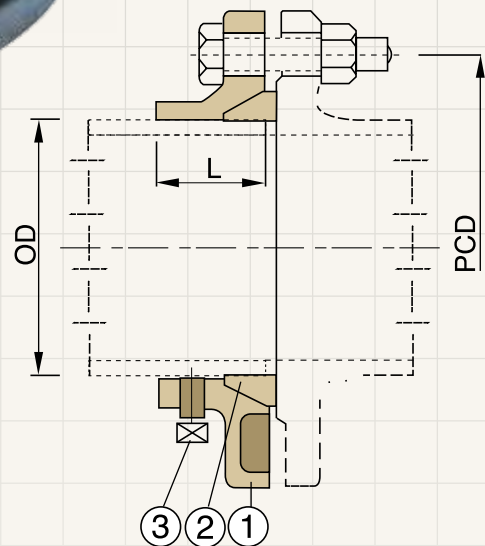


UNI-FLANGE



FEATURES:

- LYE Ductile Iron Uni-Flange Adaptor is ideal on ductile iron and mild steel pipe where retro-fitting at job site is required.
- Pipe flanging can be easily fabricated on site using plain end pipe without the need of any special tools and the flange restraint is provided by means of a set screw locking device.
- Uses EPDM wedge-rubber gasket for seal.
- Bolt hole drilling is to BS EN 1092-2 PN 16.
- Can be used for above or below ground application.
- Can be disassembled for maintenance if required.



NO	PART NAME	MATERIAL
1	Adaptor	Ductile Iron
2	Rubber Ring	EPDM
3	Set Bolts	Steel with Hot Dipped Galvanized

DN	PIPE OD		L
	DI PIPE	STEEL PIPE	
80	98	88.9	50
100	118	114.3	50
150	170	168.3	50
200	222	219.1	59
250	274	273	61
300	326	323.9	63
350	378	-	65
400	429	-	67

Please Note: Technical data provided is indicative only and may be subject to change without notice

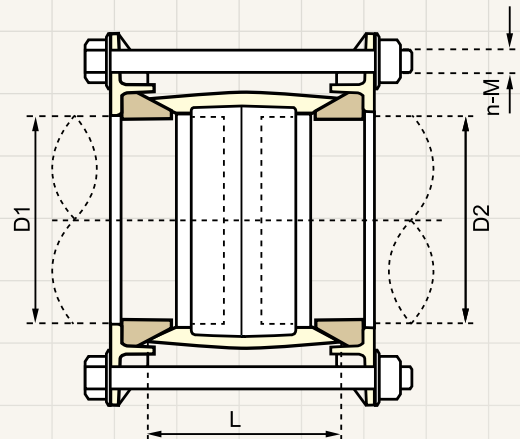


LYE MANUFACTURING SDN. BHD. (32836-H)
 Manufacturer of Valves, Hydrants, Joints, Fittings & Manhole Covers.



STEPPED COUPLING

FOR PVC-O TO MS PIPE



PVC-O-MS COUPLING
DN80-DN300

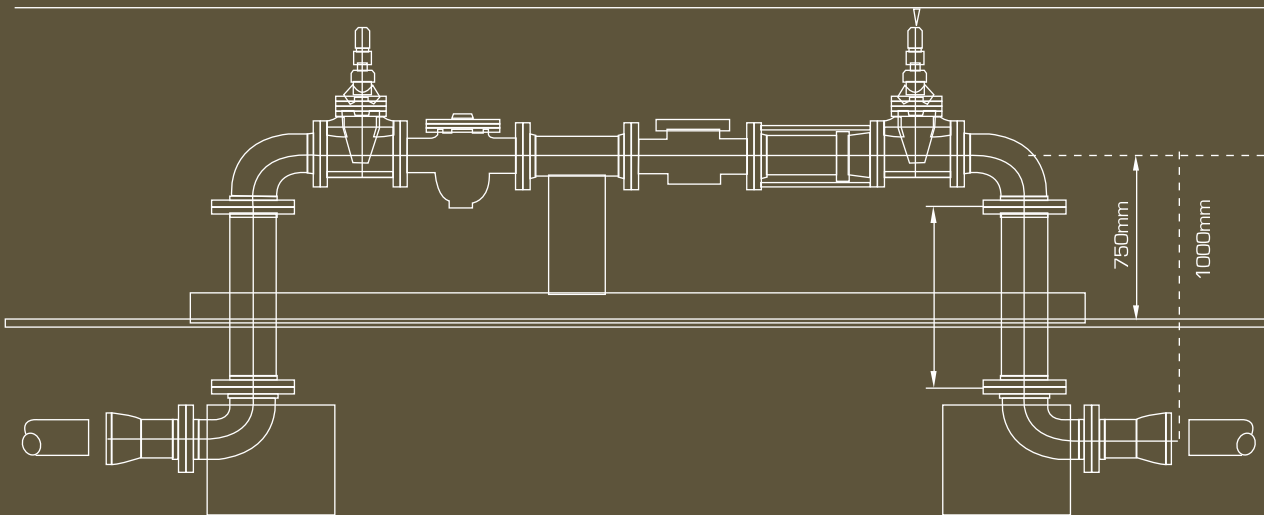
Stepped Coupling					
DN	D1 for PVC-O Pipe	D2 for MS Pipe	L	n	M
DN80	90.0	88.9	100 ±1	4	M12
DN100	110.0	114.3	110 ±1	4	M12
DN150	160.0	168.3	130 ±1	4	M12
DN200	200.0	219.1	150 ±2	4	M16
DN250	250.0	273.0	165 ±2	4	M16
DN300	315.0	323.9	170 ±2	5	M16



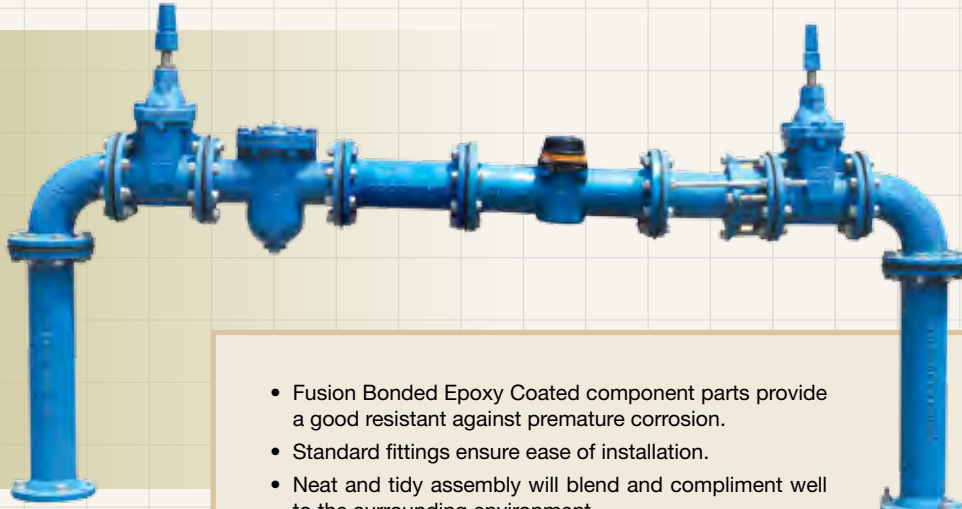
LYE MANUFACTURING SDN. BHD. (32836-H)
Manufacturer of Valves, Hydrants, Joints, Fittings & Manhole Covers.



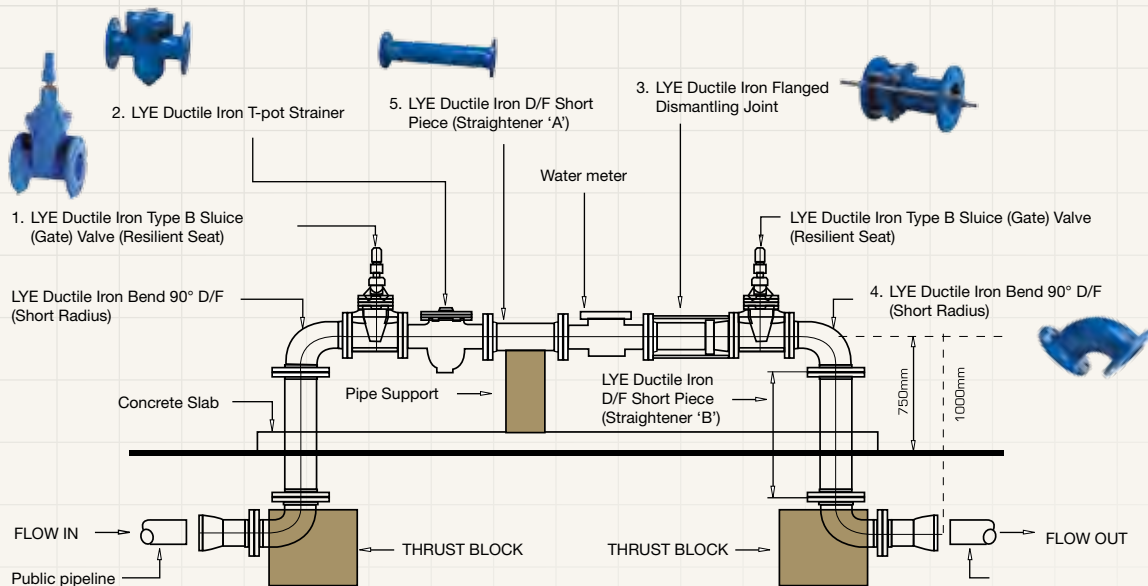
BULK METER STAND



FUSION BONDED EPOXY COATED BULK METER POSITION SYSTEM



- Fusion Bonded Epoxy Coated component parts provide a good resistant against premature corrosion.
- Standard fittings ensure ease of installation.
- Neat and tidy assembly will blend and compliment well to the surrounding environment.



METER SIZE: DN80 - DN150

Pipe Size (mm)	D/F Short Piece 'A'	D/F Short Piece 'B'
80	225	670
100	300	640
150	450	560

MATERIALS FOR MAIN PARTS

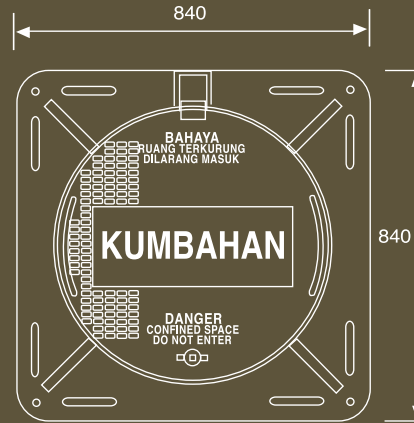
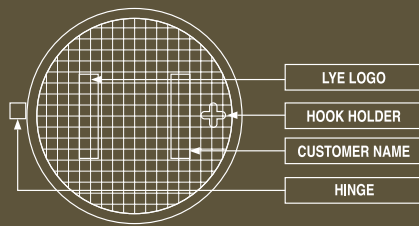
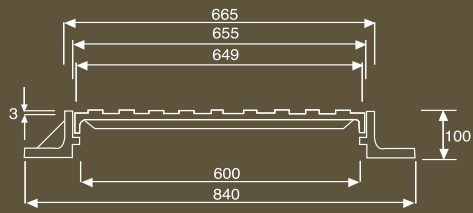
ITEM	COMPONENTS	MATERIAL	STANDARD
1	LYE Ductile Iron Type B Sluice (Gate) Valve (Resilient seat type)	Ductile Iron	BS 5163
2	LYE Ductile Iron T-pot Strainer	Ductile Iron	JKR 20200-0101-01
3	LYE Ductile Iron Flanged Dismantling Joint	Ductile Iron	JKR 20200-0048-99/
4	LYE Ductile Iron Bend 90° D/F (Short Radius)	Ductile Iron	BS EN 545/MS 1919
5	LYE Ductile Iron D/F Short Piece (Straightener)	Ductile Iron	BS EN 545/MS 1919

Please Note: Technical data provided is indicative only and may be subject to change without notice

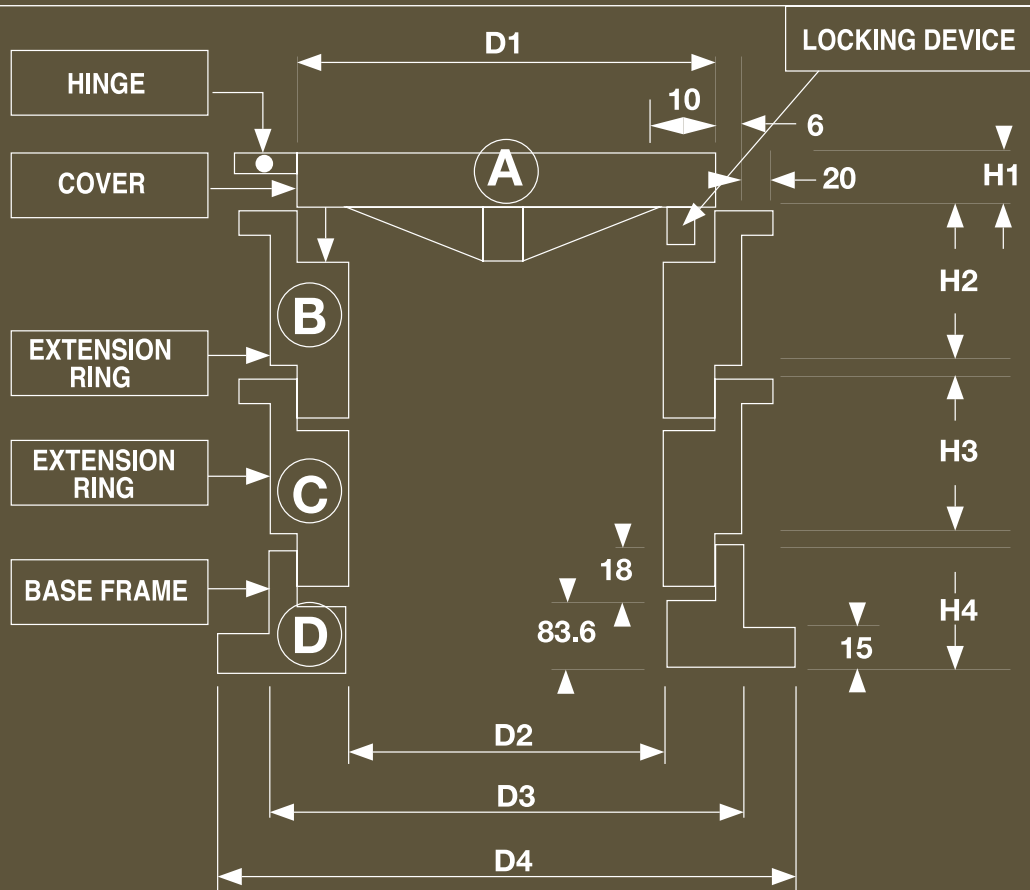


LYE MANUFACTURING SDN. BHD. (32836-H)
 Manufacturer of Valves, Hydrants, Joints, Fittings & Manhole Covers.





MANHOLE COVER & VALVE CHAMBER



MANHOLE COVER & VALVE CHAMBER

MANHOLE COVER & VALVE CHAMBER



VALVE CHAMBER

LYE DUCTILE IRON VALVE CHAMBER
Model No. : 666H (3 Sections)
Size : 609mm x 320mm x 440mm



MANHOLE COVER

LYE DUCTILE IRON MANHOLE COVER WITH
FRAME AND EXTENSION RING
Model No. : 668 | Size : 710mm x 710mm x 100mm

MANHOLE COVER

LYE DUCTILE IRON MANHOLE COVER
Model No. : 668 | Size : 710mm x 710mm x 100mm



MANHOLE COVER

LYE DUCTILE IRON MANHOLE COVER
Model No. : 670 | Size : 840mm x 840mm x 100mm

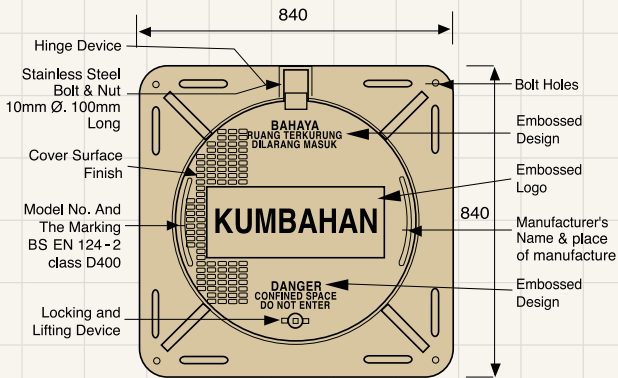


LYE MANUFACTURING SDN. BHD. (32836-H)
Manufacturer of Valves, Hydrants, Joints, Fittings & Manhole Covers.

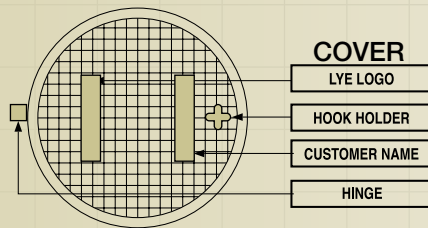
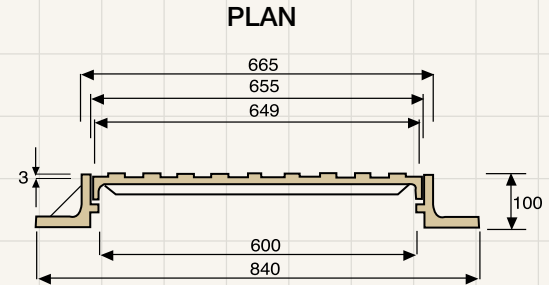


MANHOLE COVER & VALVE CHAMBER

MANHOLE COVER & VALVE CHAMBER

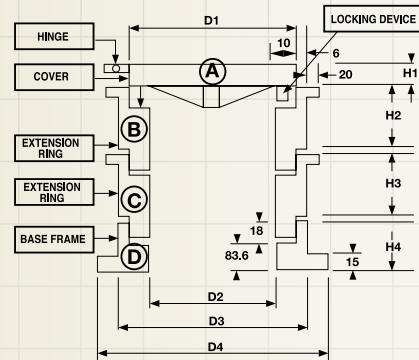


D.I. Manhole Cover & Frame (Model 670)
Size : 840mm x 840mm x 100mm (H)

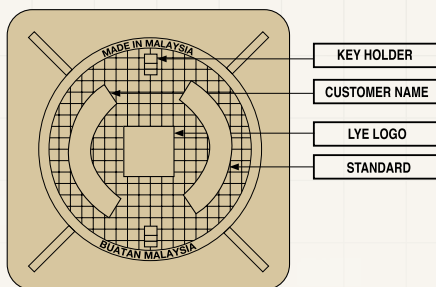


D.I. Valve Chamber (Model LYE 666H)
Size : 609mm x 320mm x 440mm

CLASS	TOLERANCE mm	D1	D2	D3	D4	H1	H2	H3	H4
		340	320	352	440	18	254	254	101
BREAKING LOAD		COVER		EXTENSION RING		EXTENSION RING			
40MT		A		B		C			
BASE FRAME									
D									

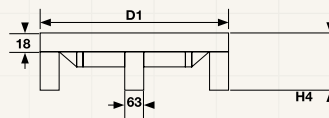


A FRAME AND COVER

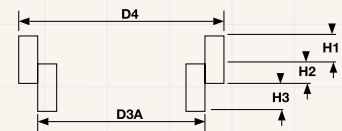


D.I. Manhole Cover & Frame (Model 668)
Size : 710mm x 710mm x 100mm (H)

B COVER

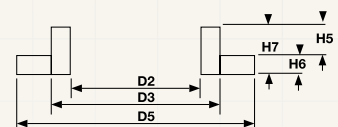


C EXTENSION RING



CLASS	D1 TOLERANCE	D2	D3	D4	D5	H1	H2	H3	H4	H5	H6	H7	D3A
D400	624±2	600	650	650	710	18	82	16	90	90	10	100	622
BREAKING LOAD		FRAME AND COVER		COVER		EXTENSION RING		BASE FRAME					
40MT		A		B		C		D					

D BASE FRAME

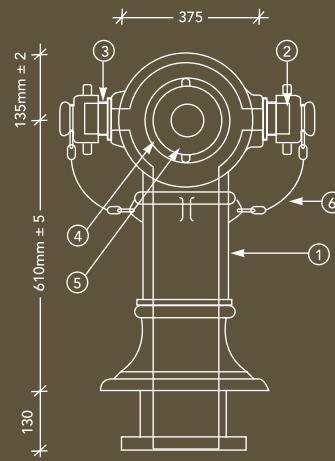
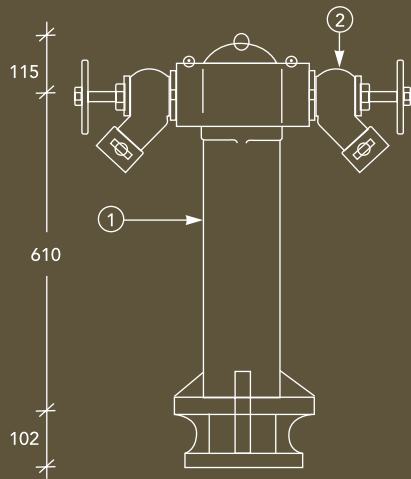


Note : The Extension Ring (Item C) height dimension - Base on site requirement

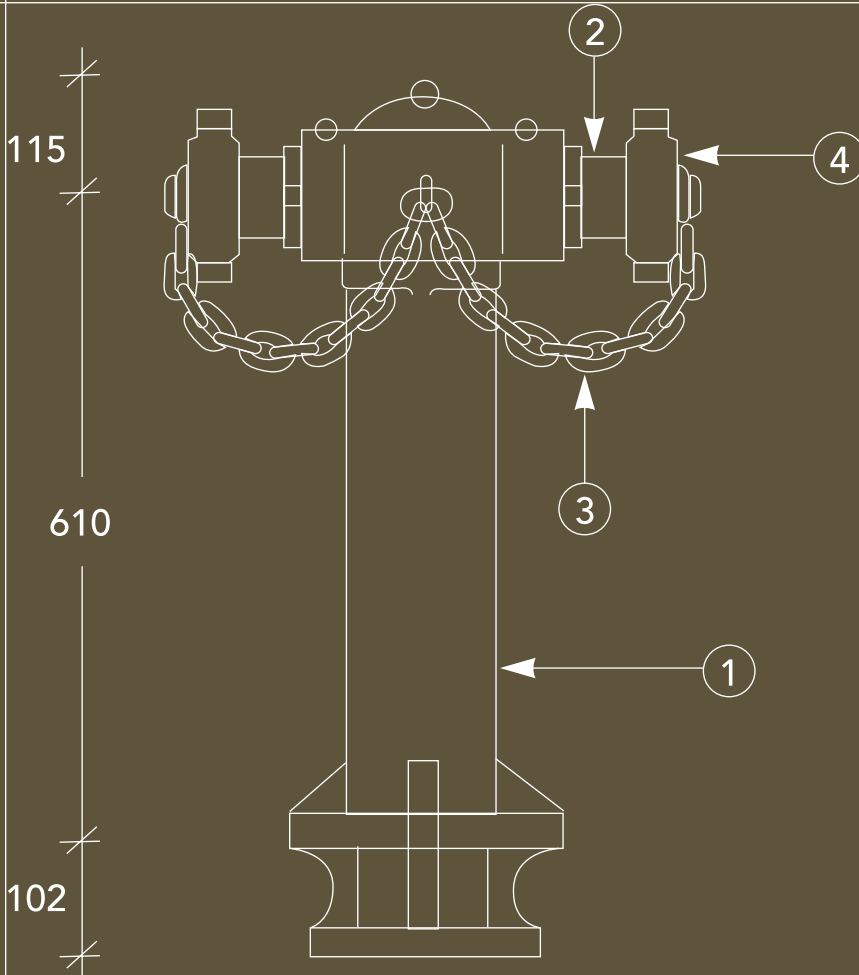


LYE MANUFACTURING SDN. BHD. (32836-H)
Manufacturer of Valves, Hydrants, Joints, Fittings & Manhole Covers.



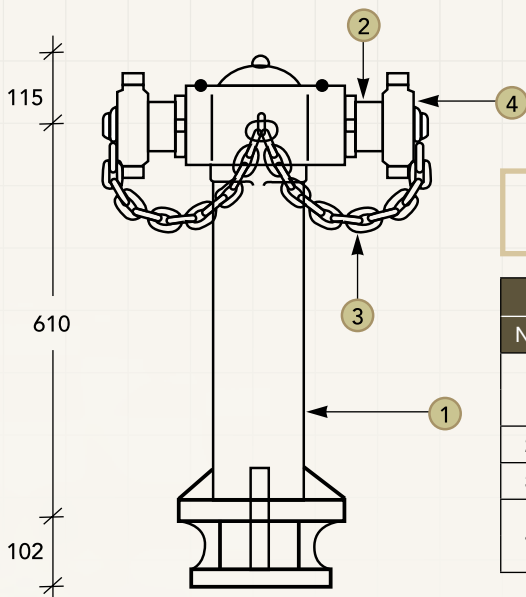


HYDRANTS



HYDRANTS

PILLAR HYDRANT



100mm PILLAR HYDRANT C/W OUTLET
Model No. : 7625

PARTS MATERIAL (DIAGRAM 1)			
NO	DESCRIPTION	MATERIAL	BS. REF. NO.
1	BODY	DUCTILE IRON (EN-GJS-500-7)	BS EN 1563
		CAST IRON (EN-GJL-200)	BS EN 1561
2	OUTLET	GUNMETAL (CuSnZn5Pb5-C)	BS EN 1982
3	CHAIN	GAL IRON	-
4	CAP	DUCTILE IRON (EN-GJS-500-7)	BS EN 1563
		CAST IRON (EN-GJL-200)	BS EN 1561

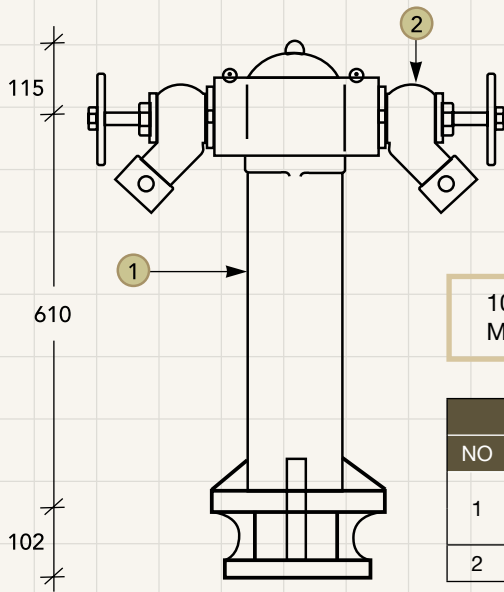


LYE MANUFACTURING SDN. BHD. (32836-H)
Manufacturer of Valves, Hydrants, Joints, Fittings & Manhole Covers.



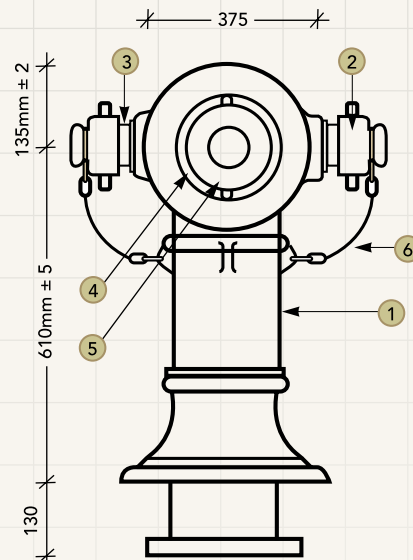
HYDRANTS

PILLAR HYDRANT



100mm PILLAR HYDRANT C/W LANDING VALVE
Model No. : 7625(A)

PARTS MATERIAL (DIAGRAM 2)			
NO	DESCRIPTION	MATERIAL	BS. REF. NO.
1	BODY	DUCTILE IRON (EN-GJS-500-7)	BS EN 1563
		CAST IRON (EN-GJL-200)	BS EN 1561
2	LANDING VALVE	GUNMETAL	BS 5041



LYE 150MM 3 WAY PILLAR HYDRANT

PARTS MATERIAL (DIAGRAM 3)				
NO	DESCRIPTION	MATERIAL	SIZE (mm)	BS. REF. NO.
1	BODY	DUCTILE IRON (EN-GJS-500-7)	150MM	BS EN 1563
		CAST IRON (EN-GJL-200)	150MM	BS EN 1561
2	CAP	DUCTILE IRON (EN-GJS-500-7)	65MM V THREAD (F)	BS EN 1563
		CAST IRON (EN-GJL-200)	65MM V THREAD (F)	BS EN 1561
3	OUTLET	GUNMETAL (CUSN5ZN5PB5-C)	65MM V THREAD (M)	BS EN 1982
4	CAP	DUCTILE IRON (EN-GJS-500-7)	65MM V THREAD (F)	BS EN 1563
		CAST IRON (EN-GJL-200)	65MM V THREAD (F)	BS EN 1561
5	OUTLET	GUNMETAL (CUSN5ZN5PB5-C)	65MM V THREAD (M)	BS EN 1982
6	CHAIN	GAL IRON	10MM	-

Please Note: Technical data provided is indicative only and may be subject to change without notice



LYE MANUFACTURING SDN. BHD. (32836-H)
Manufacturer of Valves, Hydrants, Joints, Fittings & Manhole Covers.





LYE MANUFACTURING SDN. BHD.(32836-H)

Manufacturer of Valves, Hydrants, Joints, Fittings & Manhole Covers.

Lot 1844, Jalan KPB 8, Kampung Baru Balakong, 43300 Kajang, Selangor Darul Ehsan, Malaysia.

FACTORY Tel: 603-8961 1623, Fax: 603-8961 1092

SALES Tel: 603-6140 3131 (Hunting Line) Fax: 603-6140 5858

WEBSITE www.lye.com.my

EMAIL enquiry@lye.com.my