



 Product Guide



Welcome to the Conex | Bänninger Product Guide

At Conex Bänninger we produce plumbing fittings and valves for domestic, commercial and industrial applications, working with customers in plumbing, HVAC, refrigeration, and medical businesses. Our passionate and innovative approach to the design and manufacture of plumbing fittings for use with copper, carbon, plastic and stainless steel tubes has made us a world leader.

We do more than just manufacture plumbing fittings and valves. We Strive for Excellence in all we do to build strong and close relationships with our customers through providing the best technical, sales and customer support.

As well as producing traditional fittings, at Conex Bänninger we pride ourselves on innovation. We have developed ranges like >B< Press, Cuprofit, >B< Push and Conex Push-Fit, which offer frame free installation solutions. These are quick and easy to install, saving on costs and offer a secure, long-life, leak proof joint.



Who are we

Conex Bänninger specialises in the design, manufacture and distribution of plumbing fittings and valves. For over 100 years, Conex Bänninger have produced products that offer innovative and versatile joining solutions. Our reputation for quality products is backed by excellent customer service and unrivalled expertise. As an IBP Group Company We Strive For Excellence in all we do. The Conex Bänninger fittings can be found in domestic, commercial, industrial, air condition, refrigeration and ship building application all over the world.

What we do

In the UK, a wide variety of connecting technologies including End Feed, Compression, Threaded, Crimp, Solder Ring and Push-Fit are offered under the Conex Bänninger name.

Quality

IBP is an ISO 9001 Quality assured company registered with the BSI. IBP has approvals from numerous national and international bodies including DVGW, KIWA, GASTEC, WRAS and AENOR, plus many well-know others. The majority of Conex Bänninger fittings are covered by the B.S.I. Kitemark under Licence No. KM 07283.

Health and Safety

It is the responsibility of the end user to ensure that all adequate protection is available when required and the necessary information regarding Health and Safety Regulations is adhered to. Copper and copper alloy fittings are considered non-hazardous under normal circumstances.

DZR Fittings

Many of Conex Bänninger's fittings are available in dezincification resistance (DZR) brass or as dezincification immune red brass. Dezincification of ordinary duplex brass fittings may occur under certain water supply conditions. The Conex Bänninger DZR range of fittings can safely be used in these circumstances. DZR fittings are marked with the CR symbol, recognised by the Water Industry and now specified in British & European Standards as a mark denoting materials of assessed capability of resistance.



Product Suitability	8
Conex Compression Range	10
Assembly instructions	14
Compression fittings	16
Chrome plated	42
Accessories	49
Wastes	58
Valves	68
>B< Press Range	74
Assembly instructions	80
>B< Press	
Press fit fittings for copper tube	82
>B< Press Gas	
Press fit fittings for natural gas & LPG installations	96
>B< Press Solar	
Press fit fittings for solar installations	106
>B< Press Carbon	
Press fit fittings for Carbon installations	112
>B< Press Inox	
Press fit fittings for stainless steel tube	126
>B< Press Tools	136
Pushfit Range	142
>B< Push	
Copper fittings for multiple tube & pipe materials	144
Push-Fit	
DZR Brass fittings for copper tubes	156
Cuprofit	
Copper & DZR Brass fittings for copper tube	166

Threaded Range	176
Series 3000	
Red brass threaded fittings	178
Series 8000	
Yellow brass threaded fittings	192
>B< Oyster Range	200
Assembly instructions	204
Termination fitting	206
End Feed Range	210
Assembly instructions	212
Delcop End Feed	
End feed capillary fittings	214
Delbraz	
End feed brazing fittings	238
ACR	
End feed capillary fittings	246
Medical Gas	
End feed capillary fittings	266
K65 Range	276
High pressure capillary brazing fittings	279
Triflow Solder Integral Ring	284
Assembly instructions	288
Integral lead-free solder ring fittings	290
Approval	310

PRODUCT SUITABILITY

PRODUCT	Delcop End Feed	Medical Gas Brazing	Delbraze	>B< ACR	K65	Triflow Solder Ring	Conex Compression	>B< Press Copper	>B< Press Carbon		>B< Press Inox	>B< Press Gas	>B< Press Solar	>B< Push	Conex Push-Fit	Cuprofit	Series 3000	Series 8000	>B<Oyster	
DESCRIPTION	Solder/ Brazing fittings	Brazing fittings	Brazing fittings	Imperial brazing fittings	High Pressure brazing fittings	Integral Solder fittings	Type A Compression fittings	Press fittings for water	Press fittings Carbon		Press fittings Stainless steel	Press fittings for Gas applications	Press fittings for Solar applications	Push fittings	Push fittings	Push fittings	Red Brass Threaded fittings	Yellow Brass Threaded fittings	Special O-ring seal connector	
APPLICATION																				
Hot or Cold drinking water	✓		✓			✓	✓	✓			✓			✓	✓	✓	✓	✓	✓	
Heating Water	✓		✓			✓	✓	✓	✓		✓		✓	✓	✓	✓	✓	✓	✓	
Cooling Water	✓		✓			✓		✓	✓		✓			✓	✓	✓	✓		✓	
Solar	✓		✓				✓						✓				✓	✓		
Gas (Natural/LPG)	✓		✓			✓	✓					✓					✓	✓		
Waste			✓			✓	✓	✓	✓		✓						✓	✓		
Refrigeration/ Air Con	✓		✓	✓													✓			
ACR High Pressure Co2					✓															
Compressed Air with Oil Content	✓		✓			✓	✓					✓					✓	✓		
Compressed Air (Oil Free)	✓		✓			✓	✓	✓	✓			✓					✓	✓		
Ship Building							✓	✓												
Vacuum	✓		✓				✓	✓	✓		✓						✓	✓		
Fuel/ Oil	✓					✓						✓					✓	✓		
Rain water			✓			✓	✓	✓	✓		✓						✓	✓		
Medical Gas Appliances		✓																		

PLEASE CONTACT OUR TECHNICAL TEAM FOR MORE INFORMATION.

Conex Compression Range



Conex Compression ribnut profile



MATERIAL	TUBE SPECIFICATION		SIZE ▶	6mm to 18mm	22mm	28mm to 54mm		
COPPER	Hard/Half Hard	EN1057-R250	N° of turns	11/4	1	3/4		
			Liner	none	none	none		
	EN1057-R290	N° of turns	1	3/4	1/2			
		Liner	none	none	none	none		
COPPER	Soft	EN1057-R220	SIZE ▶	8mm	10mm	15mm	18mm	22mm
			N° of turns	11/4	11/4	11/4	11/4	1
			Liner: SC1	8 x 1.0	10 x 1.0	15 x 1.0	18 x 1.0	22 x 1.0
STAINLESS STEEL	EN10312 Series 1+2 (BS4127)		SIZE ▶	6mm to 22mm	28mm	35mm to 54mm	67mm to 76.1mm	
			N° of turns	3/4	1/2	1/2*	*	
			Liner	none	none	none	none	
FLEXIBLE	PB POLYBUTYLENE		SIZE ▶	10mm	15mm	22mm	28mm	
			N° of turns	1/2	1/2	1/2	1/2	
			Liner	10 x 1.5/1.8	15 x 1.7/2.0	22 x 2.0/2.3	28 x 2.6/2.9	
	PE-X CROSS LINKED POLYETHYLENE		SIZE ▶	10mm	15mm	22mm	28mm	
			N° of turns	1/2	1/2	1/2	1/2	
			Liner	10 x 1.5/1.8	15 x 1.5/1.8	22 x 2.0/2.3	28 x 2.6/2.9	
	MDPE MEDIUM DENSITY POLYETHYLENE		SIZE ▶	20mm	25mm	32mm		
			N° of turns	1/2	1/2	1/2		
			Liner: PY	20 x 2.3/2.6	25 x 2.3/2.6	32 x 3.0/3.4		

PLEASE CONSULT OUR TECHNICAL DEPARTMENT WHEN USING OTHER MATERIALS.
 Liner to be specified by the tube manufacturer.

*Please refer to our Technical Department.

COMPRESSION ASSEMBLY INSTRUCTIONS:

Tools required:

Tube cutter, deburring tool, 2 flat-faced spanners.

Assembly

- Ensure the tube and fitting sizes are compatible.
Cut the tube end square, and ensure it retains its shape.
- Deburr the tube, both inside and outside.
- Remove the capnut and compression ring from the fitting.
- Slide the capnut, and compression ring onto the tube.
- Join the fitting onto the tube end, and slide the compression ring, and capnut towards the fitting.
- Hand tighten the capnut.
- With suitable flat-faced spanners, tighten the joint to the recommended minimum number of turns.



Demounting

- Turn off water supply and drain system.
- Place a suitable receptacle under the joint to be dismantled.
- With suitable flat-faced spanners, undo the joint.
- Slide the capnut back from the captive compression ring.
- Pull the tube from the fitting socket, ensuring any excess water is collected in the receptacle.



Brass, DZR & Red Brass Compression Range



Conex Bänninger Compression fittings are especially advantageous in retrofit plumbing schemes, where space is confined and/or the use of heat must be avoided. They are available in 6-108mm and are suitable for connecting a wide range of tubes in accordance with EN 1057.

The unique ribbed capnuts are supplied in 15-28mm. Sizes 6-12 are hexagonal capnuts and the 35-54mm are supplied with octagonal capnuts. Fittings in 66.7-108mm incorporate loose compression plates, where tightening is through six 3/8" BSW nuts and all threads. PTFE tape is not required for the installation process.

Conex Bänninger Compression fittings are available in duplex brass and/or dezincification resistant (DZR) brass or as dezincification immune red brass. Fittings are also available in chrome plated in accordance with EN 248.

Conex Bänninger Compression Fittings are also compatible with low carbon steel, stainless steel and many types of plastic pipe including crossed linked polyethylene (PE-X) and polybutylene (PB) with size compatible outside diameters.

Applications & Technical Information

Drinking water	Y
Sanitary water	Y
Heating and chilled water systems	Y
Compressed air	Y
LPG and Natural Gas	Y
Available Sizes Water	6-15, 16-28, 35-54, 67-108 mm
Available Sizes Gas	8-28mm
Available Sizes Compressed air	8-28mm
Warranty	30 years
Operating Parameters Water	6-15, 25 bar @ 0 to 95°C 16-28, 16 bar @ 0 to 95°C 35-54, 13 bar @ 0 to 95°C 67-108, 10 bar @ 0 to 95°C
Operating Parameters Gas	8-28, 1 bar @ 30°C
Operating Parameters Compressed Air	8-28, 7 bar @ 30°C
Material	Brass, DZR

For more details contact our technical team.

BRASS | RED BRASS | DZR

301 S301

Straight Coupler

Conex x Conex



ITEM	SIZE	PACK
DD-1020301--	12mm	10
EE-1020301--	15mm	10 A
FF-1020301--	18mm	10
GG-1020301--	22mm	10 A
HH-1020301--	28mm	10
JJ-1020301--	35mm	1
AA-5020301--	6mm	10
BB-5020301--	8mm	10
CC-5020301--	10mm	10
DD-5020301--	12mm	10
EE-5020301--	15mm	10 A
FF-5020301--	18mm	10
GG-5020301--	22mm	10 A
HH-5020301--	28mm	10
JJ-5020301--	35mm	1
KK-5020301--	42mm	1
NN-5020301--	54mm	1
QQ-2020301--	67mm	1
RR-2020301--	76mm	1
SS-2020301--	108mm	1



*A range means fast moving products.

BRASS | RED BRASS | DZR

301 S301

Reduced Straight Coupler

Conex x Conex



ITEM	SIZE	PACK
ED-1020301--	15 x 12mm	10
FD-1020301--	18 x 12mm	10
GE-1020301--	22 x 15mm	10
GF-1020301--	22 x 18mm	10
HG-1020301--	28 x 22mm	10
BA-5020301--	8 x 6mm	10
CB-5020301--	10 x 8mm	10
DB-5020301--	12 x 8mm	10
DC-5020301--	12 x 10mm	10
EB-5020301--	15 x 8mm	10
EC-5020301--	15 x 10mm	10
ED-5020301--	15 x 12mm	10
FE-5020301--	18 x 15mm	10
GE-5020301--	22 x 15mm	10
HG-5020301--	28 x 22mm	10
JH-5020301--	35 x 28mm	1

*A range means fast moving products.

BRASS | RED BRASS | DZR

301BH

Straight Coupler Bulkhead

Conex x Conex



ITEM	SIZE	PACK
EE-1020301BH	15mm	5

Washer not included

301BP

Straight Coupler Burst Pipe Repair

Conex x Conex



ITEM	SIZE	PACK
DZB1020301BP	12mm	10
EZB1020301BP	15mm	10
GZB1020301BP	22mm	5

S301C0

Crossover

Conex x Conex



ITEM	SIZE	PACK
EE-5020301CO	15mm	10
GG-5020301CO	22mm	5

*A range means fast moving products.

BRASS | RED BRASS | DZR

301DA

Straight Coupler with Drain Tap

Conex x Conex



ITEM	SIZE	PACK
EE-1020301DA	15mm	5
GG-1020301DA	22mm	5

Bushed to BS2879-2

S301IM

Imperial to Metric Conversion Coupler

Conex x Conex



ITEM	SIZE	PACK
R302020301IM	76 x 3"	1

301V

Straight Coupler with Air Vent

Conex x Conex



ITEM	SIZE	PACK
EE-1020301V-	15mm	10

*A range means fast moving products.

BRASS | RED BRASS | DZR

302 S302

Male Straight Connector

Conex x Male Thread (Parallel) ISO 228



ITEM	SIZE	PACK
D011020302--	12 x 1/4"	10
D021020302--	12 x 3/8"	10
D031020302--	12 x 1/2"	10
E011020302--	15 x 1/4"	10
E021020302--	15 x 3/8"	10
E031020302--	15 x 1/2"	10 A
E041020302--	15 x 3/4"	10
F031020302--	18 x 1/2"	10
F041020302--	18 x 3/4"	10
G031020302--	22 x 1/2"	10
G041020302--	22 x 3/4"	10 A
G051020302--	22 x 1"	10 A
H051020302--	28 x 1"	10 A
H061020302--	28 x 1.1/4"	1
J061020302--	35 x 1.1/4"	1
K071020302--	42 x 1.1/2"	1
N081020302--	54 x 2"	1

*A range means fast moving products.

BRASS | RED BRASS | DZR

302 S302*

Male Straight Connector (cont)

Conex x Male Thread (Parallel)



ITEM	SIZE	PACK
A605020302--	6 x 1/8"	10
B015020302--	8 x 1/4"	10
B025020302--	8 x 3/8"	10
B035020302--	8 x 1/2"	10
C015020302--	10 x 1/4"	10
C025020302--	10 x 3/8"	10
C035020302--	10 x 1/2"	10
D025020302--	12 x 3/8"	10
D035020302--	12 x 1/2"	10
E025020302--	15 x 3/8"	10
E035020302--	15 x 1/2"	10 A
E045020302--	15 x 3/4"	10
F035020302--	18 x 1/2"	10
F045020302--	18 x 3/4"	10
G035020302--	22 x 1/2"	10
G045020302--	22 x 3/4"	10 A
G055020302--	22 x 1"	10 A
H055020302--	28 x 1"	10 A
H045020302--	28 x 3/4"	10
J055020302--	35 x 1"	1
J065020302--	35 x 1.1/4"	1
K075020302--	42 x 1.1/2"	1
N085020302--	54 x 2"	1
Q092020302--	67 x 2.1/2"	1
R302020302--	76 x 3"	1
S402020302--	108 x 4"	1

*Note: All 302 fittings not to be used for gas application.

*A range means fast moving products.

BRASS | RED BRASS | DZR

302B Extended Male Straight Connector with Back Nut Conex x Male Thread



ITEM	SIZE	PACK
E031020302B-	15 x 1/2"	10
G041020302B-	22 x 3/4"	10
H051020302B-	28 x 1"	10
J061020302B-	35 x 1.1/4"	1
K071020302B-	42 x 1.1/2"	1
N081020302B-	54 x 2"	1
Q092020302B-	67 x 2.1/2"	1
R302020302B-	76 x 3"	1

301CB Extended Male Straight Connector with Back Nut Conex x Male Thread x Tail Length (mm)



ITEM	SIZE	PACK
E031020302CB	15 x 1/2 x 38mm	10

*A range means fast moving products.

BRASS | RED BRASS | DZR

302TA S302TA Male Straight Connector

Conex x Male Taper Thread to ISO 7-1



ITEM	SIZE	PACK
D021020302TA	12 x 3/8"	10
D031020302TA	12 x 1/2"	10
E021020302TA	15 x 3/8"	10
E031020302TA	15 x 1/2"	10
E041020302TA	15 x 3/4"	10
F031020302TA	18 x 1/2"	10
F041020302TA	18 x 3/4"	10
G031020302TA	22 x 1/2"	10
G041020302TA	22 x 3/4"	10
G051020302TA	22 x 1"	10
H041020302TA	28 x 3/4"	10
H051020302TA	28 x 1"	10
C025020302TA	10 x 3/8"	10
C035020302TA	10 x 1/2"	10

*A range means fast moving products.

BRASS | RED BRASS | DZR

303 S303

Female Straight Connector

Conex x Female Thread (Parallel) ISO 228



ITEM	SIZE	PACK
D021020303--	12 x 3/8"	10
D031020303--	12 x 1/2"	10
E021020303--	15 x 3/8"	10
E031020303--	15 x 1/2"	10 A
E041020303--	15 x 3/4"	10
E051020303--	15 x 1"	10
F031020303--	18 x 1/2"	10
F041020303--	18 x 3/4"	10
G031020303--	22 x 1/2"	10
G041020303--	22 x 3/4"	10 A
G051020303--	22 x 1"	10
H051020303--	28 x 1"	10
H061020303--	28 x 1.1/4"	1

*A range means fast moving products.

BRASS | RED BRASS | DZR

303 S303

Female Straight Connector (cont)

Conex x Female Thread (Parallel)



ITEM	SIZE	PACK
B015020303--	8 x 1/4"	10
B025020303--	8 x 3/8"	10
B035020303--	8 x 1/2"	10
C015020303--	10 x 1/4"	10
C025020303--	10 x 3/8"	10
C035020303--	10 x 1/2"	10
D025020303--	12 x 3/8"	10
D035020303--	12 x 1/2"	10
E025020303--	15 x 3/8"	10
E035020303--	15 x 1/2"	10 A
E045020303--	15 x 3/4"	10
F035020303--	18 x 1/2"	10
F045020303--	18 x 3/4"	10
G045020303--	22 x 3/4"	10 A
G055020303--	22 x 1"	10
H045020303--	28 x 3/4"	10
H055020303--	28 x 1"	10
J055020303--	35 x 1"	1
J065020303--	35 x 1.1/4"	1
K075020303--	42 x 1.1/2"	1
N085020303--	54 x 2"	1
O092020303--	67 x 2.1/2"	1
R302020303--	76 x 3"	1



*A range means fast moving products.

BRASS | RED BRASS | DZR

303SF S303SF Straight Tap Connector Max temp 60°C

Conex x Swivel Female Thread ISO 228



ITEM	SIZE	PACK
E031020303SF	15 x 1/2"	10 A
G041020303SF	22 x 3/4"	10
G051020303SC	22 x 1"	10
- G051020303SC represents a Cone Joint		
E035020303SF	15 x 1/2"	10 A
E045020303SF	15 x 3/4"	10
G045020303SF	22 x 3/4"	10

Supplied with sealing washer.

303 ST Female Straight Connector For Pillar Taps

Conex x Female Thread (Parallel) ISO 228



ITEM	SIZE	PACK
E031020303ST	15mm	10
E041020303ST	15mm	10
G041020303ST	22mm	10

Sealing washer not supplied.

*A range means fast moving products.

BRASS | RED BRASS | DZR

321 S321 Tank Connector

Conex



ITEM	SIZE	PACK
E--1020321--	15mm	10 A
G--1020321--	22mm	10 A
H--1020321--	28mm	10
J--1020321--	35mm	1
K--5020321--	42mm	1
N--5020321--	54mm	1

Sealing washer not supplied.

323 S323 Stop End

Conex



ITEM	SIZE	PACK
D--1020323--	12mm	10
E--1020323--	15mm	10 A
G--1020323--	22mm	10 A
H--1020323--	28mm	10
B--5020323--	8mm	10
C--5020323--	10mm	10
D--5020323--	12mm	10
E--5020323--	15mm	10 A
F--5020323--	18mm	10
G--5020323--	22mm	10 A
H--5020323--	28mm	10
J--5020323--	35mm	1
K--5020323--	42mm	1
N--5020323--	54mm	1

*A range means fast moving products.

BRASS | RED BRASS | DZR

401 S401

Elbow

Conex x Conex



ITEM	SIZE	PACK
DD-1020401--	12mm	10
EE-1020401--	15mm	10 A
FF-1020401--	18mm	10
GG-1020401--	22mm	10 A
HH-1020401--	28mm	10
JJ-1020401--	35mm	1
KK-1020401--	42mm	1
NN-1020401--	54mm	1
AA-5020401--	6mm	10
BB-5020401--	8mm	10
CC-5020401--	10mm	10
DD-5020401--	12mm	10
EE-5020401--	15mm	10 A
FF-5020401--	18mm	10
GG-5020401--	22mm	10 A
HH-5020401--	28mm	10
JJ-5020401--	35mm	1
KK-5020401--	42mm	1

*A range means fast moving products.

BRASS | RED BRASS | DZR

401 S401

Elbow

Conex x Conex



ITEM	SIZE	PACK
NN-2020401--	54mm	1
QQ-2020401--	67mm	1
RR-2020401--	76mm	1

401 S401

Reduced Elbow

Conex x Conex



ITEM	SIZE	PACK
ED-1020401--	15 x 12mm	10
GE-1020401--	22 x 15mm	10
DC-5020401--	12 x 10mm	10
EC-5020401--	15 x 10mm	10
GE-5020401--	22 x 15mm	10
HG-5020401--	28 x 22mm	10

401DA

Elbow with Drain Tap

Conex x Conex



ITEM	SIZE	PACK
EE-1020401DA	15mm	1
GG-1020401DA	22mm	5
HH-1020401DA	28mm	1

Bushed - to BS2879-2

*A range means fast moving products.

BRASS | RED BRASS | DZR

401/0

Obtuse Elbow

Conex x Conex



ITEM	SIZE	PACK
EE-1020401/O	15mm	10
GG-1020401/O	22mm	10
HH-1020401/O	28mm	1

S401S

Slow Bend

Conex x Conex



ITEM	SIZE	PACK
EE-5020401S-	15mm	10
GG-5020401S-	22mm	10
HH-5020401S-	28mm	5

401V

Elbow with Air Vent

Conex x Conex



ITEM	SIZE	PACK
EE-1020401V-	15mm	10
GG-1020401V-	22mm	10

BRASS | RED BRASS | DZR

402 S402

Male Elbow

Male Thread (Parallel) ISO 228



ITEM	SIZE	PACK
E031020402--	15 x 1/2"	10
E041020402--	15 x 3/4"	10
F031020402--	18 x 1/2"	10
G041020402--	22 x 3/4"	10
G051020402--	22 x 1"	10
H041020402--	28 x 3/4"	10
H051020402--	28 x 1"	10

B015020402--	8 x 1/4"	10
C025020402--	10 x 3/8"	10
C035020402--	10 x 1/2"	10
D025020402--	12 x 3/8"	10
D035020402--	12 x 1/2"	10
E025020402--	15 x 3/8"	10
E035020402--	15 x 1/2"	10
E045020402--	15 x 3/4"	10
F035020402--	18 x 1/2"	10
F045020402--	18 x 3/4"	10
G035020402--	22 x 1/2"	10
G045020402--	22 x 3/4"	10
H055020402--	28 x 1"	10
J065020402--	35 x 1.1/4"	1
K075020402--	42 x 1.1/2"	1

N082020402--	54 x 2"	1
--------------	---------	---

Not to be used for Gas applications

*A range means fast moving products.

BRASS | RED BRASS | DZR

402DA

Male Elbow with Drain Tap

Conex x Male Thread (parallel)



ITEM	SIZE	PACK
G041020402DA	22 x 3/4"	5
Bushed – to BS2879-2		

402CB

Extended Male Elbow with Back Nut

Conex x Male Thread (Parallel) x Tail Length (mm)



ITEM	SIZE	PACK
E031020402CB	15 x 1/2" x 38mm	10
G041020402CB	22 x 1/2" x 38mm	10
Sealing washer not supplied		

*A range means fast moving products.

BRASS | RED BRASS | DZR

402TA S402TA

Male Elbow

Conex x Male Taper Thread to ISO 7-1



ITEM	SIZE	PACK
D021020402TA	12 x 3/8"	10
D031020402TA	12 x 1/2"	10
E021020402TA	15 x 3/8"	10
E031020402TA	15 x 1/2"	10
E041020402TA	15 x 3/4"	10
F041020402TA	18 x 3/4"	10
G041020402TA	22 x 3/4"	10
G051020402TA	22 x 1"	10
H051020402TA	28 x 1"	5

*A range means fast moving products.

BRASS | RED BRASS | DZR

403 S403

Female Elbow

Conex x Female Thread (Parallel) ISO 228



ITEM	SIZE	PACK
D031020403--	12 x 1/2"	10
E031020403--	15 x 1/2"	10
E041020403--	15 x 3/4"	10
F031020403--	18 x 1/2"	10
F041020403--	18 x 3/4"	10
G031020403--	22 x 1/2"	10
G041020403--	22 x 3/4"	10
G051020403--	22 x 1"	10
H041020403--	28 x 3/4"	10
H051020403--	28 x 1"	10
K071020403--	42 x 1.1/2"	1
B015020403--	8 x 1/4"	10
C025020403--	10 x 3/8"	10
C035020403--	10 x 1/2"	10
D025020403--	12 x 3/8"	10
D035020403--	12 x 1/2"	10
E025020403--	15 x 3/8"	10
E035020403--	15 x 1/2"	10
E045020403--	15 x 3/4"	10
F045020403--	18 x 3/4"	10
G035020403--	22 x 1/2"	10
G045020403--	22 x 3/4"	10
H055020403--	28 x 1"	10
J065020403--	35 x 1.1/4"	1
K072020403--	42 x 1.1/2"	1
N082020403--	54 x 2"	1

*A range means fast moving products.

BRASS | RED BRASS | DZR

403SF S403SF

Bent Tap Connector Max temp 60°C

Conex x Swivel Female Thread (Parallel)



ITEM	SIZE	PACK
E031020403SF	15 x 1/2"	10
G031020403SF	22 x 1/2"	10
G041020403SF	22 x 3/4"	10
E035020403SF	15 x 1/2"	10

Supplied with washer

403W S403W

Female Wall Plate Elbow (2 Hole)

Conex x Female thread (Parallel) ISO 228



ITEM	SIZE	PACK
E031020403W-	15 x 1/2"	10
E035020403W-	15 x 1/2"	10

403WL S403WL

Female Wall Plate Elbow (3 Hole)

Conex x Female Thread (Parallel) ISO 228



ITEM	SIZE	PACK
E031020403WE	15 x 1/2"	1
E031020403WL	15 x 1/2"	10
G031020403WL	22 x 1/2"	10
C035020403WL	10 x 1/2"	10
D035020403WL	12 x 1/2"	10
E035020403WL	15 x 1/2"	10
G045020403WL	22 x 3/4"	10

BRASS | RED BRASS | DZR

601EQ S601EQ Tee - Equal

Conex All Ends



ITEM	SIZE	PACK
DDD1020601EQ	12mm	10
EEE1020601EQ	15mm	10 A
FFF1020601EQ	18mm	10
GGG1020601EQ	22mm	5 A
HHH1020601EQ	28mm	1
AAA5020601EQ	6mm	10
BBB5020601EQ	8mm	10
CCC5020601EQ	10mm	10
DDD5020601EQ	12mm	10
EEE5020601EQ	15mm	10 A
FFF5020601EQ	18mm	10
GGG5020601EQ	22mm	5 A
HHH5020601EQ	28mm	1
JJJ5020601EQ	35mm	1
KKK5020601EQ	42mm	1
NNN2020601EQ	54mm	1
QQQ2020601EQ	67mm	1
RRR2020601EQ	76mm	1

*A range means fast moving products.

BRASS | RED BRASS | DZR

601RB S601RB Tee - Reduced Branch

Conex All Ends



ITEM	SIZE	PACK
GGE1020601--	22 x 22 x 15mm	5
HHE1020601--	28 x 28 x 15mm	1
HHG1020601--	28 x 28 x 22mm	1
NNE1020601--	54 x 54 x 15mm	1
NNG1020601--	54 x 54 x 22mm	1
NNH1020601--	54 x 54 x 28mm	1
DDC5020601--	12 x 12 x 10mm	10
EEC5020601--	15 x 15 x 10mm	10
EED5020601--	15 x 15 x 12mm	10
FFD5020601--	18 x 18 x 12mm	10
FFE5020601--	18 x 18 x 15mm	10
GGD5020601--	22 x 22 x 12mm	5
GGE5020601--	22 x 22 x 15mm	5
GGF5020601--	22 x 22 x 18mm	5
HHE5020601--	28 x 28 x 15mm	1
HHG5020601--	28 x 28 x 22mm	1
JJE5020601--	35 x 35 x 15mm	1
JJG5020601--	35 x 35 x 22mm	1
JJH5020601--	35 x 35 x 28mm	1
KKE5020601--	42 x 42 x 15mm	1
KKG5020601--	42 x 42 x 22mm	1
KKH5020601--	42 x 42 x 28mm	1
KKJ5020601--	42 x 42 x 35mm	1
QQH2020601--	67 x 67 x 28mm	1
QQN2020601--	67 x 67 x 54mm	1
RRH2020601--	76 x 76 x 28mm	1
RRN2020601--	76 x 76 x 54mm	1



BRASS | RED BRASS | DZR

601RE S601RE Tee - Reduced End

Conex All Ends



ITEM	SIZE	PACK
GEG1020601--	22 x 15 x 22mm	5
HEH1020601--	28 x 15 x 28mm	1
GEG5020601--	22 x 15 x 22mm	5
HGH5020601--	28 x 22 x 28mm	1

601REB S601REB Tee - Reduced End and Branch

Conex All Ends



ITEM	SIZE	PACK
GEE1020601--	22 x 15 x 15mm	5
EDD5020601--	15 x 12 x 12mm	10
GEE5020601--	22 x 15 x 15mm	10
HGG5020601--	28 x 22 x 22mm	1

601REE S601REE Tee - Reduced Both Ends

Conex All Ends



ITEM	SIZE	PACK
EEG1020601--	15 x 15 x 22mm	10
GGH5020601--	22 x 22 x 28mm	1

*A range means fast moving products.

BRASS | RED BRASS | DZR

S615 Tee with Male Branch

Conex x Conex x Male Thread (Parallel)



ITEM	SIZE	PACK
EE35020615--	15 x 15 x 1/2"	10
GG35020615--	22 x 22 x 1/2"	5
GG45020615--	22 x 22 x 3/4"	5

S615 not suitable for gas applications.

617 S617 Tee with Female Branch

Conex x Conex x Female Thread (Parallel) ISO 228



ITEM	SIZE	PACK
EE11020617--	15 x 15 x 1/4"	10
EE31020617--	15 x 15 x 1/2"	10
EE41020617--	15 x 15 x 3/4"	10
FF31020617--	18 x 18 x 1/2"	10
GG31020617--	22 x 22 x 1/2"	5
GG51020617--	22 x 22 x 1"	5
HH41020617--	28 x 28 x 3/4"	1

DD25020617--	12 x 12 x 3/8"	10
DD35020617--	12 x 12 x 1/2"	10
EE35020617--	15 x 15 x 1/2"	10
GG35020617--	22 x 22 x 1/2"	5
GG45020617--	22 x 22 x 3/4"	5
HH35020617--	28 x 28 x 1/2"	1
HH55020617--	28 x 28 x 1"	1
EE35020617W-	15 x 15 x 1/2"	10
GG35020617W-	22 x 22 x 1/2"	10
E3E5020631--	15 x 1/2 x 15mm	10
G4G5020631--	22 x 3/4 x 22mm	5

*A range means fast moving products.

631

Tee with Male End

Conex x Male Thread (Parallel) x Conex ISO 228



ITEM	SIZE	PACK
G4G1020631	22 x 3/4" x 22mm	5
S631 not suitable for gas applications.		

645

Tee with Male and Female End

Conex Male Thread x Conex Female Thread (Parallel) ISO 228



ITEM	SIZE	PACK
33E1020645--	1/2 x 1/2 x 15mm	10

684 **S684**

Tee with Female End

Conex x Female Thread (Parallel) x Conex ISO 228



ITEM	SIZE	PACK
G3G1020684	22 x 1/2" x 22mm	5
G4G1020684	22 x 3/4" x 22mm	5
E3E5020684--	15 x 1/2 x 15mm	10

901

Cross - Equal

Conex All Ends



ITEM	SIZE	PACK
GGGG1020901-	22 x 22 x 22 x 22mm	1

*A range means fast moving products.

301CP **S301CP** Straight Coupler

Conex x Conex



ITEM	SIZE	PACK
EE-1320301--	15mm	1
GG-1320301--	22mm	1
CC-5320301--	10mm	10
DC-5320301--	12 x 10mm	10
DD-5320301--	12mm	10
EE-5320301--	15mm	1
HH-5320301--	28mm	1
JJ-5320301--	35mm	1

302CP **S302CP** Male Straight Connector

Conex x Male Thread (Parallel) ISO 228



ITEM	SIZE	PACK
E031320302--	15 x 1/2"	1
G041320302--	22 x 3/4"	10
E035320302--	15 x 1/2"	10
H055320302--	28 x 1"	1

S302CP not suitable for gas applications.

303CP **S303CP** Female Straight Connector

Conex x Female Thread (Parallel) ISO 228



ITEM	SIZE	PACK
E031320303--	15 x 1/2"	1
G041320303--	22 x 3/4"	1

BRASS | RED BRASS | DZR

S303SFCP

Straight Tap Connector Max temp 60°

Conex x Swivel Female Thread



ITEM	SIZE	PACK
E035320303--	15 x 1/2"	1
G045320303--	22 x 3/4"	10

Sealing washer supplied.

S323CP

Stop End

Conex



ITEM	SIZE	PACK
E--5320323--	15mm	1
G--5320323--	22mm	1

401CP S401CP

Elbow

Conex x Conex



ITEM	SIZE	PACK
EE-1320401--	15mm	1
GG-1320401--	22mm	1
HH-1320401--	28mm	1
CC-5320401--	10mm	10
DD-5320401--	12mm	10
EE-5320401--	15mm	1
GG-5320401--	22mm	1

BRASS | RED BRASS | DZR

402CP S402CP

Male Elbow

Conex x Male Thread (Parallel) ISO 228



ITEM	SIZE	PACK
E031320402--	15 x 1/2"	1
G045320402--	22 x 3/4"	1

S402CP not suitable for gas applications.

403CP S403CP

Female Elbow

Conex x Female Thread (Parallel) ISO 228



ITEM	SIZE	PACK
E031320403--	15 x 1/2"	10

S403SFCP

Bent Tap Connector

Conex x Swivel Female Thread



ITEM	SIZE	PACK
E035320403SF	15 x 1/2"	1

Sealing washer supplied

BRASS | RED BRASS | DZR

403WCP

Female Wall Plate Elbow (2 Hole)

Conex x Swivel Female Thread (Parallel)



ITEM	SIZE	PACK
E031320403W-	15 x 1/2"	1

601EQCP
S601EQCP

Tee - Equal

Conex all Ends



ITEM	SIZE	PACK
EEE1320601EQ	15mm	1
GGG1320601EQ	22mm	1
DDD5320601EQ	12mm	10
EEE5320601EQ	15mm	1
GGG5320601EQ	22mm	5
HHH1320601EQ	28mm	1
JJJ5320601EQ	35mm	1

BRASS | RED BRASS | DZR

601CP
S601CP

Tee - Reduced

Conex all Ends



ITEM	SIZE	PACK
GEE1320601--	22 x 15 x 15mm	1
GGE1320601--	22 x 22 x 15mm	1
GEG5320601--	22 x 15 x 22mm	1
GGE5320601--	22 x 22 x 15mm	5
HHE5320601--	28 x 28 x 15mm	1
HHG5320601--	28 x 28 x 22mm	1
JJE5320601--	35 x 35 x 15mm	1

615CP

Tee with Male Branch



ITEM	SIZE	PACK
EE35020615--	15 x 15 x 1/2"	10

617CP

Tee with Female Branch

Conex x Conex x Female Thread (Parallel) ISO 228



ITEM	SIZE	PACK
EE31320617--	15 x 15 x 1/2"	1

S684CP

BRASS | RED BRASS | DZR

Tee with Female End

Conex x Female Thread (Parallel) ISO 228



ITEM	SIZE	PACK
E3E5320684--	15 x 1/2"	1

63CP

Capnut

Conex x Female Thread (Parallel) ISO 228



ITEM	SIZE	PACK
E--1320063--	15mm	1
J--1320063--	35mm	1

S68CP

Internal Reducer

Three Piece



ITEM	SIZE	PACK
GE-5320068--	22 x 15mm	1
HE-5320068--	28 x 15mm	1
HG-5320068--	28 x 22mm	1
JG-5320068--	35 x 22mm	1
JH-5320068--	35 x 28mm	1

S61

BRASS | RED BRASS | DZR

Blanking Piece



ITEM	SIZE	PACK
D--5020061--	12mm	10
E--5020061--	15mm	10
G--5020061--	22mm	10

63

Capnut



ITEM	SIZE	PACK
B--1020063--	8mm	100
C--1020063--	10mm	100
D--1020063--	12mm	100
E--1020063--	15mm	50
F--1020063--	18mm	50
G--1020063--	22mm	50
H--1020063--	28mm	25
J--1020063--	35mm	10
K--1020063--	42mm	10
N--1020063--	54mm	5
Q--1020063--	67mm	1
R--1020063--	76mm	1

BRASS | RED BRASS | DZR

63B Blank Cap



ITEM	SIZE	PACK
C--1020063B-	10mm	10
D--1020063B-	12mm	10
E--1020063B-	15mm	10
G--1020063B-	22mm	10
H--1020063B-	28mm	10
J--1020063B-	35mm	10
K--1020063B-	42mm	10
N--1020063B-	54mm	5

63V Terminal Air Vent for Compression End



ITEM	SIZE	PACK
E--1020063TV	15mm	10

63V Air Vent for Compression End



ITEM	SIZE	PACK
E--1020063V-	15mm	10

BRASS | RED BRASS | DZR

65 Compression Ring



ITEM	SIZE	PACK
A--1020065--	6mm	100
B--1020065--	8mm	100
C--1020065--	10mm	100
D--1020065--	12mm	100
E--1020065--	15mm	100
F--1020065--	18mm	100
G--1020065--	22mm	100
H--1020065--	28mm	50
J--1020065--	35mm	10
K--1020065--	42mm	10
N--1020065--	54mm	10
Q--1020065--	67mm	1
R--1020065--	76mm	1
S--1020065--	108mm	1
04-1020065--	3/4"	100
05-1020065--	1"	50
06-1020065--	1.1/4"	10
30-1020065--	3"	1

S68S Single Step Reducer

Single Piece



ITEM	SIZE	PACK
BA-5020068S-	8 x 6mm	10

BRASS | RED BRASS | DZR

S68

Internal Reducer

Three Piece



ITEM	SIZE	PACK
CB-5020068--	10 x 8mm	10
DB-5020068--	12 x 8mm	10
DC-5020068--	12 x 10mm	10
EB-5020068--	15 x 8mm	10
EC-5020068--	15 x 10mm	10
ED-5020068--	15 x 12mm	10
FD-5020068--	18 x 12mm	10
FE-5020068--	18 x 15mm	10
GD-5020068--	22 x 12mm	10
GE-5020068--	22 x 15mm	10
GF-5020068--	22 x 18mm	10
HE-5020068--	28 x 15mm	10
HF-5020068--	28 x 18mm	10
HG-5020068--	28 x 22mm	10
JE-5020068--	35 x 15mm	1
JF-5020068--	35 x 18mm	1
JG-5020068--	35 x 22mm	1
JH-5020068--	35 x 28mm	1
KE-5020068--	42 x 15mm	1
KG-5020068--	42 x 22mm	1
KH-5020068--	42 x 28mm	1
KJ-5020068--	42 x 35mm	1
NE-5020068--	54 x 15mm	1
NG-5020068--	54 x 22mm	1
NH-5020068--	54 x 28mm	1
NJ-5020068--	54 x 35mm	1
NK-5020068--	54 x 42mm	1
QN-2020068--	67 x 54mm	1
RQ-2020068--	76 x 67mm	1

BRASS | RED BRASS | DZR

G68E

External Reducer



ITEM	SIZE	PACK
RN-2020068E-	76 x 54mm	1

S68S		
Adaptor		
Metric/Imperial		
ITEM	SIZE	PACK
S405020068S-	108mm x 4"	1
K071020068S -	42mm x 1-1/2"	1



BRASS | RED BRASS | DZR

S68SP

Internal Reducer

Single Piece



ITEM	SIZE	PACK
CB-5020M68SP	10 x 8mm	10
DB-5020M68SP	12 x 8mm	10
DC-5020M68SP	12 x 10mm	10
EB-5020068SP	15 x 8mm	10
EC-5020M68SP	15 x 10mm	10
ED-5020M68SP	15 x 12mm	10
FD-5020M68SP	18 x 12mm	10
FE-5020M68SP	18 x 15mm	10
GD-5020M68SP	22 x 12mm	10
GE-5020M68SP	22 x 15mm	10
GF-5020M68SP	22 x 18mm	10
HE-5020M68SP	28 x 15mm	10
HF-5020M68SP	28 x 18mm	10
HG-5020M68SP	28 x 22mm	10
JG-5020M68SP	35 x 22mm	1
JH-5020M68SP	35 x 28mm	1

BRASS | RED BRASS | DZR

72

Adaptor

Male Thread (Parallel) x Female Thread (Parallel)



ITEM	SIZE	PACK
03-1020072--	1/2"	10
04-1020072--	3/4"	10

74

Adaptor for Tap Extension

Male Thread (Parallel) x Female Thread (Parallel)



ITEM	SIZE	PACK
04-1020074--	3/4"	10

85

Capnut Spanner Zinc Plated

Conex



ITEM	SIZE	PACK
GE-9520085--	22 x 15mm	1

BRASS | RED BRASS | DZR

85R

'C' Capnut Spanner Zinc Plated

Conex



ITEM	SIZE	PACK
GE-9020085R-	22 x 15mm	1

96

Brass Washer



ITEM	SIZE	PACK
03-1020096--	1/2"	10
04-1020096--	3/4"	10
05-1020096--	1"	10

97

Sealing Washer



ITEM	SIZE	PACK
03-9020097--	1/2"	100
04-9020097--	3/4"	100

For use with swivel fitting

BRASS | RED BRASS | DZR

98

Rubber Washer



ITEM	SIZE	PACK
E--9020098--	15mm	50
G--9020098--	22mm	50
H--9020098--	28mm	50

For use with item code W63B

SC1

Soft Copper Liner



ITEM	SIZE	PACK
C103031000SC	10mm	100
E103031000SC	15mm	100
F103031000SC	18mm	100
G103031000SC	22mm	50

51

Ring

Copper Poly



ITEM	SIZE	PACK
03-3020051--	1/2"	100
04-3020051--	3/4"	100

99 Rubber Washer



ITEM	SIZE	PACK
N--9020099--	54mm	10

155 Combination Vanity Basin Waste & Overflow - Plated



ITEM	SIZE	PACK
06S12D0155--	1.1/4"	1

P211PCP Deep Seal P



ITEM	SIZE	PACK
06J32P2211D-	1 1/4 x 35"	1
07K32P2211D-	1.1/2 x 42"	1

P219 Deep Seal P with Adjustable Inlet



ITEM	SIZE	PACK
07K30P2219DC	1.1/2 x 42"	1

160C Fixed Inlet - Fabricated

Swivel Female Thread x Conex



ITEM	SIZE	PACK
07K300160--	42 x 1.1/2"	1

401F Elbow



ITEM	SIZE	PACK
JJ-3022401F-	35 x 35mm	1
KK-3022401F-	42 x 42mm	1
NN-3022401F-	54 x 54mm	1

401FPCP

Elbow



ITEM	SIZE	PACK
JJ-3222401F-	35 x 35mm	1
KK-3222401F-	42 x 42mm	1
NN-3222401F-	54 x 54mm	1

P211

Deep Seal P



ITEM	SIZE	PACK
06J30P2211D-	1.1/4" x 35	1
07K30i221D-	1.1/2" x 42	1
08N30P2211D-	2" x 54	1

16030

Chrome Plated Brass Adjustable Inlet



ITEM	SIZE	PACK
06-120016030	1.1/4 x 35mm	1
07-120016030	1.1/2 x 42mm	1

140S

Basin Slotted



ITEM	SIZE	PACK
06S12D0140--	1.1/4"	1

140U

Basin Unslotted



ITEM	SIZE	PACK
06U12D0140--	1.1/4"	1

S211 S211PCP Deep Seal S



ITEM	SIZE	PACK
06J30S2211D-	1 1/4" x 35	1
07K30S2211D-	1.1/2" x 42	1
08N30S2211D-	2" x 54	1
06J32S2211D-	1 1/4" x 35	1
08N32S2211D-	2" x 54	1

W301

Straight Coupler



ITEM	SIZE	PACK
JJ-1022301--	35 x 35mm	1
KK-1022301--	42 x 42mm	1
NN-1022301--	54 x 54mm	1

W301PCP

Straight Coupler



ITEM	SIZE	PACK
JJ-1222301--	35 x 35mm	1
KK-1222301--	42 x 42mm	1
NN-1222301--	54 x 54mm	1

P314

Running P



ITEM	SIZE	PACK
JJ-30P2314R-	35mm	1
KK-30P2314R-	42mm	1
NN-30P2314R-	54mm	1
KK-32P2314R-	42mm	1
NN-32P2314R-	54mm	1

W401/OF

Obtuse Elbow



ITEM	SIZE	PACK
JJ-3022401OF	35mm	1
KK-3022401OF	42mm	1
NN-3022401OF	54mm	1

W401/OFPCP

Obtuse Elbow



ITEM	SIZE	PACK
JJ-3222401OF	35mm	1
KK-3222401OF	42mm	1
NN-3222401OF	54mm	1

W401FTPCP

Elbow with Cleaning Eye



ITEM	SIZE	PACK
NN-3222401FT	54mm	1

W432 Bent Tail Pipe Extended 16" Long Fabrication



ITEM	SIZE	PACK
066302243216	16"	1
077302243216	16"	1

W601S Sweep Tee



ITEM	SIZE	PACK
KKK1022601S-	42 x 42 x 42mm	1
NNJ1022601S-	54 x 54 x 35mm	1
NNK1022601S-	54 x 54 x 42mm	1
NNN1022601S-	54 x 54 x 54mm	1

W601SPCP Sweep Tee



ITEM	SIZE	PACK
JJJ1322601S-	35 x 35 x 35mm	1
KKJ1322601S-	42 x 42 x 35mm	1
KKK1322601S-	42 x 42 x 42mm	1
NNJ1322601S-	54 x 54 x 35mm	1
NNK1322601S-	54 x 54 x 42mm	1
NNN1322601S-	54 x 54 x 54mm	1

W63 Capnut



ITEM	SIZE	PACK
J--1022063--	35mm	1
K--1022063--	42mm	1

W63B Blank Capnut



ITEM	SIZE	PACK
J--1022063-	35mm	10
K--1022063-	42mm	1
N--1022063-	54mm	1

W63BPCP Blank Capnut



ITEM	SIZE	PACK
J--1222063B-	35mm	1
K--1222063B-	42mm	1
N--1222063B-	54mm	1

W63PCP

Capnut



ITEM	SIZE	PACK
J--1222063--	35mm	1
K--1222063--	42mm	1
N--1222063--	54mm	1

W65

Ring



ITEM	SIZE	PACK
J--1022065--	35mm	1
K--1022065--	42mm	1
N--1022065--	54mm	1

W65P

Plastic Ring



ITEM	SIZE	PACK
N--9022065P-	54mm	1

W68

Internal Reducer



ITEM	SIZE	PACK
KJ-1022068--	42 x 35mm	1
NJ-1022068--	54 x 35mm	1
NK-1022068--	54 x 42mm	1
KJ-1222068--	42 x 35mm	1
NJ-1222068--	54 x 35mm	1
NK-1222068--	54 x 42mm	1

BRASS | RED BRASS | DZR

701

Stop Valve - Crutch Head



ITEM	SIZE	PACK
EE-1012701--	15mm	5
GG-1012701--	22mm	5
HH-1012701--	28mm	1
JJ-1012701--	35mm	1
KK-1012701--	42mm	1
NN-1012701--	54mm	1
EE-5012701--	15mm	5
GG-5012701--	22mm	5
HH-5012701--	28mm	1

52033

High Pressure Brass Float Valve



ITEM	SIZE	PACK
81D103352003	1/2 x 8.1/4 x 3 x 1.3/8"	1

For our complete Valves range please pick up a copy of our Valves Product Guide.

BRASS | RED BRASS | DZR

1201

Lever Ball Valve with Standard Lever



ITEM	SIZE	PACK
EE-1021201--	15mm	1
GG-1021201--	22mm	1
HH-1021201--	28mm	1
EE-5021201--	15mm	1
GG-5021201--	22mm	1

1211

Lever Ball Valve with Red T Handle



ITEM	SIZE	PACK
EE-1021211--	15mm	1
GG-1021211--	22mm	1

1501

Plug Tap for Gas



ITEM	SIZE	PACK
EE-1021501--	15mm	5

For our complete Valves range please pick up a copy of our Valves Product Guide.

BRASS | RED BRASS | DZR

1001 Brass Gate Valve



ITEM	SIZE	PACK
100110CCW16N-N-	15mm	5
100110CCW16K-K-	22mm	5
100110CCW16J-J-	28mm	2
100110CCW16H-H-	35mm	1
100110CCW16G-G-	42mm	1
100110CCW16E-E-	54mm	1

1001CP Chrome Plated Brass Gate Valves



ITEM	SIZE	PACK
EE-1342500--	15mm	1

1001LK Brass Lock Shield Gate Valve



ITEM	SIZE	PACK
EE-1842500--	15mm	5
GG-1842500--	22mm	5
HH-1842500--	28mm	2
JJ-1842500--	35mm	1
KK-1842500--	42mm	1
NN-1842500--	54mm	1

For our complete Valves range please pick up a copy of our Valves Product Guide.

BRASS | RED BRASS | DZR

1101/100 DZR Gate Valves



ITEM	SIZE	PACK
QQ-2042520--	67mm	1
RR-2042520--	76mm	1

720NP Straight Servicing Valve



ITEM	SIZE	PACK
EC-1512720B-	15 x 10mm	10
EE-1512720B-	15 x 15mm	10
GG-1512720B-	22 x 22mm	10

For our complete Valves range please pick up a copy of our Valves Product Guide.

BRASS | RED BRASS | DZR

721NP Servicing Valve Elbow

ITEM	SIZE	PACK
E031512721B-	15 x 1/2"	10

Supplied with sealing washer.



722NP Straight Servicing Valve

ITEM	SIZE	PACK
E031512722B-	15 x 1/2"	10

Supplied with sealing washer.



For our complete Valves range please pick up a copy of our Valves Product Guide.

BRASS | RED BRASS | DZR

S742 Male Draining Tap

ITEM	SIZE	PACK
03-5040742--	1/2"	10



S746 Draining Tap

ITEM	SIZE	PACK
03-5040746--	1/2"	10



>B< Press Range



MATERIAL	TUBE SPECIFICATION		SIZE ▶	6mm to 18mm	22mm	28mm to 54mm		
COPPER	Hard/Half Hard	EN1057-R250	N° of turns	11/4		1	3/4	
			Liner	none		none	none	
		EN1057-R290	N° of turns	1		3/4	1/2	
			Liner	none		none	none	none
COPPER	Soft	EN1057-R220	SIZE ▶	8mm	10mm	15mm	18mm	22mm
			N° of turns	11/4	11/4	11/4	11/4	1
			Liner: SC1	8 x 1.0	10 x 1.0	15 x 1.0	18 x 1.0	22 x 1.0
STAINLESS STEEL	EN10312 Series 1+2 (BS4127)	SIZE ▶	6mm to 22mm	28mm	35mm to 54mm	67mm to 76.1mm		
		N° of turns	3/4	1/2	1/2*	*		
		Liner	none	none	none	none		
FLEXIBLE	PB POLYBUTYLENE	SIZE ▶	10mm	15mm	22mm	28mm		
		N° of turns	1/2	1/2	1/2	1/2		
		Liner	10 x 1.5/1.8	15 x 1.7/2.0	22 x 2.0/2.3	28 x 2.6/2.9		
	PE-X CROSS LINKED POLYETHYLENE	SIZE ▶	10mm	15mm	22mm	28mm		
		N° of turns	1/2	1/2	1/2	1/2		
		Liner	10 x 1.5/1.8	15 x 1.5/1.8	22 x 2.0/2.3	28 x 2.6/2.9		
	MDPE MEDIUM DENSITY POLYETHYLENE	SIZE ▶	20mm	25mm	32mm			
		N° of turns	1/2	1/2	1/2			
		Liner: PY	20 x 2.3/2.6	25 x 2.3/2.6	32 x 3.0/3.4			

PLEASE CONSULT OUR TECHNICAL DEPARTMENT WHEN USING OTHER MATERIALS.
 Liner to be specified by the tube manufacturer.

*Please refer to our Technical Department.

>B< Press Range



Conex Bänninger >B< Press fittings are user friendly and very quick to install, leading to savings on labour costs. It also offers the advantage of a flame free installation, therefore posing no fire risk. >B< Press is a versatile press fitting system for use with hard, half-hard and soft copper tube, providing a secure, long-life, leak-proof joint. Available in Copper and Red Brass and suitable for use with copper tube to EN 1057.

Leak before press feature

Conex Bänninger has developed a unique leak before press feature, a specially designed O-ring. It has a reduced section in two positions causing leaks at low pressures when not pressed (from 0.1 to 5.0 bar). When the fitting is pressed, the O-ring material compresses, filling the gaps, securing a leak-free path. Therefore there is no need to go to full test pressure to check that all fittings have been pressed. This >B< Press feature is available in fittings sized 12-54mm and suitable for hot and cold water applications.

Applications & Technical Information

Drinking water	Y
Sanitary water	Y
Heating and chilled water systems	Y
Compressed Air (Oil Free)	Y
Available Sizes	15mm to 54mm
Available Sizes	67mm to 108mm
Warranty	5 years, 10 years with B press tube
Material	Copper and Red Brass EPDM O-ring
Max Hydrostatic Pressure	16 bar
Max Temperature Ranges	-35°C to 110°C
Profile(s)	>B< Profile 15-54mm M Profile 67 - 108mm

For more details contact our technical team.

>B< PRESS ASSEMBLY INSTRUCTIONS:

Tools required:

Tube cutter, deburring tool, press machine, press jaws.

Assembly

- Ensure the tube and fitting sizes are compatible.
- Cut the tube end square, and ensure it retains its shape.
- Deburr the inside, and outside of the tube.
- Mark the tube to the correct tube stop depth as a visual aid.
- Check O-rings are present in the fitting.
- Insert the tube into the fitting, passed the O-ring, until it meets the tube stop and the mark on the tube is still visible.
- Insert the >B< profile Jaw with the correct profile and size into the >B< Press Tool.
- Open the press jaw, and align with the O-ring bead, allow the jaw to close.
- Operate the press machine to press the fitting.
- The machine will stop at the end of its pressing cycle.
- Open the jaw, and remove from the fitting.
- Make sure all joints have been pressed.
- If the joint(s) is (are) not pressed, when pressure tested they will leak profusely.



Demounting

- This fitting system is not demountable.

P1

Straight Coupler

Copper x Copper



ITEM	SIZE	PACK
P5270 01500000	15mm	10
P5270 02200000	22mm	10
P5270 02800000	28mm	5
P5270 03500000	35mm	1
P5270 04200000	42mm	1
P5270 05400000	54mm	1
P4270 06700000	67mm	1
P4270 07600000	76mm	1
P4270 08900000	89mm	1
P4270 10800000	108mm	1

P1R

Reduced Straight Coupler

Copper x Copper



ITEM	SIZE	PACK
P5240 02215000	22 x 15mm	10
P5240 02822000	28 x 22mm	5
P5240 03528000	35 x 28mm	5
P5240 04235000	42 x 35mm	1
P5240 05442000	54 x 42mm	1

P1S

Slip Coupler

Copper x Copper



ITEM	SIZE	PACK
P4275 01500000	15mm	5
P4275 02200000	22mm	5
P4275 02800000	28mm	5
P4275 03500000	35mm	1
P4275 04200000	42mm	1
P4275 05400000	54mm	1
P4275 06700000	67mm	1
P4275 07600000	76mm	1
P4275 08900000	89mm	1
P4275 10800000	108mm	1

P2

Female Straight Connector

Copper x Female Thread (Parallel)



ITEM	SIZE	PACK
P4270G01504000	15 x 1/2"	5
P4270G02204000	22 x 1/2"	5
P4270G02206000	22 x 3/4"	5
P4270G02808000	28 x 1"	5
P4270G03510000	35 x 1.1/4"	1
P4270G04212000	42 x 1.1/2"	1
P4270G05416000	54 x 2"	1

P3

Male Straight Connector

Copper x Male Thread



ITEM	SIZE	PACK
P4243G01504000	15 x 1/2"	5
P4243G02206000	22 x 3/4"	5
P4243G02808000	28 x 1"	5
P4243G03510000	35 x 1.1/4"	1
P4243G04212000	42 x 1.1/2"	1
P4243G05416000	54 x 2"	1
P4243G06720000	67 x 2.1/2"	1
P4243G07624000	76 x 3"	1

P12

90° Bend

Copper x Copper



ITEM	SIZE	PACK
P5002 01500000	15mm	10
P5002 02200000	22mm	10
P5002 02800000	28mm	5
P5002 03500000	35mm	5
P5002 04200000	42mm	5
P5002 05400000	54mm	1
P4090 06700000	67mm	1
P4090 07600000	76mm	1
P4090 08900000	89mm	1
P4090 10800000	108mm	1

P12S

90° Street Bend

Copper x Male Copper



ITEM	SIZE	PACK
P5001 01500000	15mm	10
P5001 02200000	22mm	10
P5001 02800000	28mm	5
P5001 03500000	35mm	5
P5001 04200000	42mm	5
P5001 05400000	54mm	1
P4092 06700000	67mm	1
P4092 07600000	76mm	1
P4092 08900000	89mm	1
P4092 10800000	108mm	1

P6

Fitting Reducer

Male Copper x Copper



ITEM	SIZE	PACK
P5243 01512000	15 x 12mm	10
P5243 02215000	22 x 15mm	10
P5243 02815000	28 x 15mm	5
P5243 02822000	28 x 22mm	10
P5243 03522000	35 x 22mm	5
P5243 03528000	35 x 28mm	1
P5243 04222000	42 x 22mm	1
P5243 04228000	42 x 28mm	1
P5243 04235000	42 x 35mm	1
P5243 05435000	54 x 35mm	1
P5243 05442000	54 x 42mm	1
P4243 06728000	67 x 28mm	1
P4243 06735000	67 x 35mm	1
P4243 06742000	67 x 42mm	1
P4243 06754000	67 x 54mm	1
P4243 07635000	76 x 35mm	1
P4243 07642000	76 x 42mm	1
P4243 07654000	76 x 54mm	1
P4243 07667000	76 x 67mm	1
P4243 08954000	89 x 54mm	1
P4243 08967000	89 x 67mm	1
P4243 08976000	89 x 76mm	1
P4243 10842000	108 x 42mm	1
P4243 10854000	108 x 54mm	1
P4243 10867000	108 x 67mm	1
P4243 10876000	108 x 76mm	1
P4243 10889000	108 x 89mm	1

P13

90° Bend with Male Thread

Copper x Male Thread (Taper)



ITEM	SIZE	PACK
P4001G01504000	15 x 1/2"	10
P4001G02206000	22 x 3/4"	5
P4001G02808000	28 x 1"	5
P4001G03510000	35 x 1.1/4"	1
P4001G04212000	42 x 1.1/2"	1
P4001G05416000	54 x 2"	1

P14

90° Elbow with Female Thread

Copper x Female Thread (Parallel)



ITEM	SIZE	PACK
P4090G01504000	15 x 1/2"	5
P4090G02204000	22 x 1/2"	5
P4090G02206000	22 x 3/4"	5
P4090G02208000	22 x 1"	5
P4090G02808000	28 x 1"	5
P4090G03510000	35 x 1.1/4"	1
P4090G04212000	42 x 1.1/2"	1
P4090G05416000	54x 2"	1

P21

45° Obtuse Elbow

Copper x Copper



ITEM	SIZE	PACK
P5041 01500000	15mm	10
P5041 02200000	22mm	10
P5041 02800000	28mm	5
P5041 03500000	35mm	5
P5041 04200000	42mm	5
P5041 05400000	54mm	1
P4041 06700000	67mm	1
P4041 07600000	76mm	1
P4041 08900000	89mm	1
P4041 10800000	108mm	1

P21S

45° Obtuse Street Elbow

Copper x Male Copper



ITEM	SIZE	PACK
P5040 01500000	15mm	10
P5040 02200000	22mm	10
P5040 02800000	28mm	5
P5040 03500000	35mm	5
P5040 04200000	42mm	5
P5040 05400000	54mm	1
P4040 06700000	67mm	1
P4040 07600000	76mm	1
P4040 08900000	89mm	1
P4040 10800000	108mm	1

P24

Tee - Equal

Copper All Ends



ITEM	SIZE	PACK
P5130 01515015	15mm	10
P5130 02222022	22mm	10
P5130 02828028	28mm	5
P5130 03535035	35mm	1
P5130 04242042	42mm	1
P5130 05454054	54mm	1
P4130 06767067	67mm	1
P4130 07676076	76mm	1
P4130 08989089	89mm	1
P4130 108108108	108mm	1

P25

Tee - Reduced Branch

Copper All Ends



ITEM	SIZE	PACK
P5130 02215022	22 x 22 x 15mm	5
P5130 02815028	28 x 28 x 15mm	5
P5130 02822028	28 x 28 x 22mm	5
P5130 03515035	35 x 35 x 15mm	1
P5130 03522035	35 x 35 x 22mm	1
P5130 03528035	35 x 35 x 28mm	1
P5130 04222042	42 x 42 x 22mm	1
P5130 04228042	42 x 42 x 28mm	1
P5130 04235042	42 x 42 x 35mm	1
P5130 05422054	54 x 54 x 22mm	1
P5130 05428054	54 x 54 x 28mm	1
P5130 05435054	54 x 54 x 35mm	1
P5130 05442054	54 x 54 x 42mm	1
P4130 06728067	67 x 67 x 28mm	1
P4130 06735067	67 x 67 x 35mm	1
P4130 06742067	67 x 67 x 42mm	1
P4130 06754067	67 x 67 x 54mm	1
P4130 07628076	76 x 76 x 28mm	1
P4130 07635076	76 x 76 x 35mm	1
P4130 07642076	76 x 76 x 42mm	1
P4130 07654076	76 x 76 x 54mm	1
P4130 07667076	76 x 76 x 67mm	1
P4130 08954089	89 x 89 x 54mm	1
P4130 08976089	89 x 89 x 76mm	1
P4130 10854108	108 x 108 x 54mm	1
P4130 10876108	108 x 108 x 76mm	1
P4130 10889108	108 x 108 x 89mm	1

P26

Tee - Reduced End

Copper All Ends



ITEM	SIZE	PACK
P5130 02222015	22 x 15 x 22mm	10
P5130 02828015	28 x 15 x 28mm	5
P5130 02828022	28 x 22 x 28mm	5

P27

Tee - Reduced End and Branch

Copper All Ends



ITEM	SIZE	PACK
P5130 02215015	22 x 15 x 15mm	10
P5130 02815022	28 x 22 x 15mm	5
P5130 02822022	28 x 22 x 22mm	5
P5130 03522028	35 x 28 x 22mm	1
P5130 03528028	35 x 28 x 28mm	1
P5130 04235035	42 x 35 x 35mm	1
P5130 05442042	54 x 42 x 42mm	1

P28

Tee - Reduced Both Ends

Copper All Ends



ITEM	SIZE	PACK
P5130 01522015	15 x 15 x 22mm	10
P5130 02228022	22 x 22 x 28mm	5

P30

Tee with Female Threaded Branch

Copper x Copper x Female Thread



ITEM	SIZE	PACK
P4130G01504015	15 x 15 x 1/2"	5
P4130G02204022	22 x 22 x 1/2"	5
P4130G02206022	22 x 22 x 3/4"	5
P4130G02804028	28 x 28 x 1/2"	5
P4130G02806028	28 x 28 x 3/4"	5
P4130G03504035	35 x 35 x 1/2"	1
P4130G04204042	42 x 42 x 1/2"	1
P4130G05404054	54 x 54 x 1/2"	1
P4130G06706067	67 x 67 x 3/4"	1
P4130G06716067	67 x 67 x 2"	1
P4130G07606076	76 x 76 x 3/4"	1
P4130G07616076	76 x 76 x 2"	1
P4130G08906089	89 x 89 x 3/4"	1
P4130G08916089	89 x 89 x 2"	1
P4130G10806108	108 x 108 x 3/4"	1
P4130G10816108	108 x 108 x 2"	1

Y3270

Blanking Plug

Conex x Conex



ITEM	SIZE	PACK
------	------	------

For Blanking Plugs refer to Catalogue No. R302

P61

Stop End

Copper



ITEM	SIZE	PACK
P5301 01500000	15mm	10
P5301 02200000	22mm	10
P5301 02800000	28mm	5
P5301 03500000	35mm	1
P5301 04200000	42mm	1
P5301 05400000	54mm	1
P4301 06700000	67mm	1
P4301 07600000	76mm	1
P4301 08900000	89mm	1
P4301 10800000	108mm	1

P69M

Male Straight Union Connector

Copper x Male Thread



ITEM	SIZE	PACK
P4331G01504000	15 x 1/2"	5
P4331G02206000	22 x 3/4"	5
P4331G02808000	28 x 1"	5
P4331G03510000	35 x 1.1/4"	1
P4331G04212000	42 x 1.1/2"	1
P4331G05416000	54 x 2"	1

P69F

Female Straight Union Connector

Copper x Female Thread



ITEM	SIZE	PACK
P4330G01504000	15 x 1/2"	5
P4330G02206000	22 x 3/4"	5
P4330G02808000	28 x 1"	5
P4330G03510000	35 x 1.1/4"	1
P4330G04212000	42 x 1.1/2"	1
P4330G05416000	54 x 2"	1

P4230B

PN16 Flange (4/8 hole)



ITEM	SIZE	PACK
P4230B06720000	67mm	1
P4230B07620000	76mm	1
P4230B10811500	108mm	1



>B< Press Gas Range



>B< Press Gas fittings are identified by a yellow coloured HNBR O-ring. A versatile press fitting system for use with hard, half-hard and soft copper tube, providing a secure, long-life, leak-proof joint. Suitable for use with copper tube to EN 1057 and available in sizes 15-54mm in Copper and Red Brass.

Leak before press feature

Conex Bänninger has developed a unique leak before press feature, a specially designed HNBR O-ring. It has a reduced section in two positions causing leaks at low pressures when not pressed (from 0.1 to 5.0 bar). When the fitting is pressed, the O-ring material compresses, filling the gaps, securing a leak-free path. Therefore there is no need to go to full test pressure to check that all fittings have been pressed.

Applications & Technical Information

LPG and Natural Gas	Y
Compressed Air	Y
Available Sizes	15-54mm
Warranty	5 years
Operating Parameters Gas	5 bar -20C to 70C
Operating Parameters Liquid Gas	5 bar -20C to 70C
Fuel Oil Installations	5 bar
Material	Copper, Red Brass HNBR O-ring Yellow
Profile	>B< Profile 15-54mm

For more details contact our technical team.

PG1 Straight Coupler

Copper x Copper



ITEM	SIZE	PACK
PG5270 0150000	15mm	10
PG5270 0220000	22mm	10
PG5270 0280000	28mm	10
PG5270 0350000	35mm	5
PG5270 0420000	42mm	5
PG5270 0540000	54mm	1

PG1S Slip Coupler

Copper x Copper



ITEM	SIZE	PACK
PG4275 0150000	15mm	5
PG4275 0220000	22mm	5
PG4275 0280000	28mm	5
PG4275 0350000	35mm	1
PG4275 0420000	42mm	1
PG4275 0540000	54mm	1

PG2 Straight Female Connector

Copper x Female Thread



ITEM	SIZE	PACK
PG4270G0150400	15 x 1/2"	5
PG4270G0150600	15 x 3/4"	5
PG4270G0220400	22 x 1/2"	5
PG4270G0220600	22 x 3/4"	5
PG4270G0220800	22 x 1"	5
PG4270G0280800	28 x 1"	5
PG4270G0351000	35 x 1.1/4"	1
PG4270G0421200	42 x 1.1/2"	1
PG4270G0541600	54 x 2"	1

PG3 Straight Male Connector

Copper x Male Thread



ITEM	SIZE	PACK
PG4243G0150400	15 x 1/2"	5
PG4243G0150600	15 x 3/4"	5
PG4243G0220400	22 x 1/2"	5
PG4243G0220600	22 x 3/4"	5
PG4243G0220800	22 x 1"	5
PG4243G0280600	28 x 3/4"	5
PG4243G0280800	28 x 1"	5
PG4243G0281000	28 x 1.1/4"	5
PG4243G0350800	35 x 1"	1
PG4243G0351000	35 x 1.1/4"	1
PG4243G0351200	35 x 1.1/2"	1
PG4243G0421000	42 x 1.1/4"	1
PG4243G0421200	42 x 1.1/2"	1
PG4243G0541200	54 x 1.1/2"	1
PG4243G0541600	54 x 2"	1

PG6 Fitting Reducer

Male Copper x Copper



ITEM	SIZE	PACK
PG5243 0221500	22 x 15mm	10
PG5243 0281500	28 x 15mm	10
PG5243 0282200	28 x 22mm	10
PG5243 0352200	35 x 22mm	5
PG5243 0352800	35 x 28mm	5
PG5243 0422200	42 x 22mm	5
PG5243 0422800	42 x 28mm	5
PG5243 0423500	42 x 35mm	5
PG5243 0544200	54 x 42mm	1
PG5243 0543500	54 x 35mm	1

PG12S 90° Street Bend

Male Copper x Copper



ITEM	SIZE	PACK
PG5001 0150000	15mm	10
PG5001 0220000	22mm	10
PG5001 0280000	28mm	5
PG5001 0350000	35mm	5
PG5001 0420000	42mm	5
PG5001 0540000	54mm	1

PG12 90° Bend

Copper x Copper



ITEM	SIZE	PACK
PG5002 0150000	15mm	10
PG5002 0220000	22mm	10
PG5002 0280000	28mm	5
PG5002 0350000	35mm	5
PG5002 0420000	42mm	5
PG5002 0540000	54mm	1

PG13 90° Bend with Male Thread

Copper x Male Thread



ITEM	SIZE	PACK
PG4001G0150400	15 x 1/2"	5
PG4001G0220600	22 x 3/4"	5
PG4001G0280800	28 x 1"	5
PG4001G0351000	35 x 1.1/4"	1
PG4001G0421200	42 x 1.1/2"	1
PG4001G0541600	54 x 2"	1

PG14

90° Bend with Female Thread

Copper x Female Thread



ITEM	SIZE	PACK
PG4090G0150400	15 x 1/2"	5
PG4090G0150600	15 x 3/4"	5
PG4090G0220400	22 x 1/2"	5
PG4090G0220600	22 x 3/4"	5
PG4090G0220800	22 x 1"	5
PG4090G0280800	28 x 1"	5
PG4090G0351000	35 x 1.1/4"	1
PG4090G0421200	42 x 1.1/2"	1
PG4090G0541600	54 x 2"	1

PG21

45° Obtuse Elbow

Copper x Copper



ITEM	SIZE	PACK
PG5041 0150000	15mm	10
PG5041 0220000	22mm	10
PG5041 0280000	28mm	5
PG5041 0350000	35mm	5
PG5041 0420000	42mm	5
PG5041 0540000	54mm	1

PG21S

Obtuse Street Elbow

Male Copper x Copper



ITEM	SIZE	PACK
PG5040 0150000	15mm	10
PG5040 0220000	22mm	10
PG5040 0280000	28mm	5
PG5040 0350000	35mm	5
PG5040 0420000	42mm	5
PG5040 0540000	54mm	1

PG24

Tee - Equal

Copper x Copper



ITEM	SIZE	PACK
PG5130 0151515	15mm	10
PG5130 0222222	22mm	10
PG5130 0282828	28mm	5
PG5130 0353535	35mm	1
PG5130 0424242	42mm	1
PG5130 0545454	54mm	1

PG25

Tee - Reduced Branch

Copper x Copper



ITEM	SIZE	PACK
PG5130 0221522	22 x 15 x 22mm	10
PG5130 0281528	28 x 15 x 28mm	5
PG5130 0282228	28 x 22 x 28mm	5
PG5130 0352235	35 x 22 x 35mm	5
PG5130 0352835	35 x 28 x 35mm	1
PG5130 0422842	42 x 28 x 42mm	1
PG5130 0423542	42 x 35 x 42mm	1
PG5130 0544254	54 x 42 x 54mm	1

PG26 Tee - Reduced End

Copper x Copper



ITEM	SIZE	PACK
PG5130 0222215	22 x 22 x 15mm	10

PG27 Tee - Reduced End & Branch

Copper x Copper



ITEM	SIZE	PACK
PG5130 0221515	22 x 15 x 15mm	10

PG30 Tee - Reduced Female Threaded Branch

Copper x Female Thread



ITEM	SIZE	PACK
PG4130G0150415	15 x 1/2 x 15mm	5
PG4130G0220422	22 x 1/2 x 22mm	5
PG4130G0220622	22 x 3/4 x 22mm	5
PG4130G0280628	28 x 3/4 x 28mm	5
PG4130G0350435	35 x 1/2 x 35mm	1
PG4130G0420442	42 x 1/2 x 42mm	1
PG4130G0540454	54 x 1/2 x 54mm	1

PG61 Stop End

Copper



ITEM	SIZE	PACK
PG5301 0150000	15mm	10
PG5301 0220000	22mm	10
PG5301 0280000	28mm	10
PG5301 0350000	35mm	5
PG5301 0420000	42mm	5
PG5301 0540000	54mm	1

>B< Press Solar Range



>B< Press Solar fittings are identified by a green coloured FKM O-ring. Suitable for use with copper tube to EN 1057 (R250 or R290) and available in sizes 15-28mm. Tested and approved by SPF (Solartechnik Prüfung Forschung) in Switzerland. Fittings are suitable for continuous operating temperatures up to 140°C and short-term excursions up to 230°C. Suitable for applications to -20°C and working pressures up to 10 bar.

Leak before press feature

Conex Bänninger has developed a unique leak before press feature, a specially designed FKM O-ring. It has a reduced section in two positions causing leaks at low pressures when not pressed (from 0.1 to 5.0 bar). When the fitting is pressed, the O-ring material compresses, filling the gaps, securing a leak-free path. Therefore there is no need to go to full test pressure to check that all fittings have been pressed.

Applications & Technical Information

Solar Applications	Y
High Temperature Heating e.g. District Heat	Y
Available Sizes	15mm to 28mm
Warranty	5 years
Operating Parameters	-20°C to 140°C Short term 230°C
Material	Copper, Red Brass FKM O-ring (green)
Water / Glycol	50/50
Profile	>B< Profile 15-28mm

For more details contact our technical team.

PH1 Straight Coupler

Copper x Copper



ITEM	SIZE	PACK
PH5270 0150000	15mm	2
PH5270 0220000	22mm	2
PH5270 0280000	28mm	2

PH2 Straight Female Connector

Copper x Female Thread



ITEM	SIZE	PACK
PH4270G0150600	15 x 3/4"	2
PH4270G0220600	22 x 3/4"	2
PH4270G0220800	22 x 1"	2

PH3 Straight Male Connector

Copper x Male Thread



ITEM	SIZE	PACK
PH4243G0150400	15 x 1/2"	2
PH4243G0150600	15 x 3/4"	2
PH4243G0220600	22 x 3/4"	2
PH4243G0280800	28 x 1"	2

PH6 Fitting Reducer

Male Copper x Copper



ITEM	SIZE	PACK
PH5243 0221500	22 x 15mm	2
PH5243 0281500	28 x 15mm	2
PH5243 0282200	28 x 22mm	2

PH12 Elbow

Copper x Copper



ITEM	SIZE	PACK
PH5002 0150000	15mm	2
PH5002 0220000	22mm	2
PH5002 0280000	28mm	2

PH12S Street Elbow

Male Copper x Copper



ITEM	SIZE	PACK
PH5001 0150000	15mm	2
PH5001 0220000	22mm	2
PH5001 0280000	28mm	2

PH21S

45° Elbow

Copper x Copper



ITEM	SIZE	PACK
PH5041 0150000	15mm	2
PH5041 0220000	22mm	2
PH5041 0280000	28mm	2

PH12S

45° Street Elbow

Male Copper x Copper



ITEM	SIZE	PACK
PH5040 0150000	15mm	2
PH5040 0220000	22mm	2
PH5040 0280000	28mm	2

PH24

Equal Tee

Copper x Copper



ITEM	SIZE	PACK
PH5130 0151515	15mm	2
PH5130 0222222	22mm	2
PH5130 0282828	28mm	2

PH25

Tee- Reduced Branch

Copper x Copper



ITEM	SIZE	PACK
PH5130 0221522	22 x 22 x 15mm	2
PH5130 0282228	28 x 28 x 22mm	2
PH4130G0150415	15 x 1/2 x 15mm	2
PH4130G0220422	22 x 1/2 x 22mm	2

PH69F

Female Straight Union Connector

Copper x Female Thread



ITEM	SIZE	PACK
PH4330G0220600	22 x 3/4"	2

PH4355

Connector with Flat Face

Copper x Female Thread



ITEM	SIZE	PACK
PH4355 0150600	15 x 3/4"	2
PH4355 0220800	22 x 1"	2

>B< Press Carbon Range



>B< Press Carbon press fitting systems are quick and simple to install, providing a secure, long-life, leak-proof joint. Suitable to use on all carbon steel tubes in accordance with EN 10305- and available in sizes 12-108mm.

Leak before press feature

Conex Bänninger has developed a unique leak before press feature, a specially designed EPDM O-ring. It has a reduced section in two positions causing leaks at low pressures when not pressed (from 0.1 to 5.0 bar). When the fitting is pressed, the O-ring material compresses, filling the gaps, securing a leak-free path. Therefore there is no need to go to full test pressure to check that all fittings have been pressed.

Applications & Technical Information

Heating and chilled water systems	Y
Available Sizes	12-108mm
Warranty	5 years, 10 years with >B< press tube
Operating Parameters	-35°C to 110°C.
Hydrostatic Pressure	16 bar.
Material	Galvanised Carbon Steel EPDM O-ring Zinc coated
Profile	>B< Profile 12-54mm Mprofile 67mm -108mm

For more details contact our technical team

PC1

Straight Coupler

Carbon x Carbon



ITEM	SIZE	PACK
PC5270 0120000	12mm	10
PC5270 0150000	15mm	10
PC5270 0180000	18mm	10
PC5270 0220000	22mm	10
PC5270 0280000	28mm	5
PC5270 0350000	35mm	1
PC5270 0420000	42mm	1
PC5270 0540000	54mm	1
PC5270 0760000	76mm	1
PC5270 0890000	89mm	1
PC5270 1080000	108mm	1

PC1S

Slip Coupler

Carbon x Carbon



ITEM	SIZE	PACK
PC4275 0120000	12mm	5
PC4275 0150000	15mm	5
PC4275 0180000	18mm	5
PC4275 0220000	22mm	5
PC4275 0280000	28mm	5
PC4275 0350000	35mm	1
PC4275 0420000	42mm	1
PC4275 0540000	54mm	1
PC5275 0760000	76mm	1
PC5275 0890000	89mm	1
PC5275 1080000	108mm	1

PC6

Fitting Reducer

Male Carbon x Carbon



ITEM	SIZE	PACK
PC5243 0151200	15 x 12	10
PC5243 0181200	18 x 12	10
PC5243 0181500	18 x 15	10
PC5243 0221500	22 x 15	10
PC5243 0221800	22 x 18	10
PC5243 0281500	28 x 15	5
PC5243 0281800	28 x 18	5
PC5243 0282200	28 x 22	10
PC5243 0351800	35 x 18	5
PC5243 0352200	35 x 22	5
PC5243 0352800	35 x 28	1
PC5243 0422800	42 x 28	1
PC5243 0423500	42 x 35	1
PC5243 0542800	54 x 28	1
PC5243 0543500	54 x 35	1
PC5243 0544200	54 x 42	1
PC5243 0764200	76 x 42	1
PC5243 0765400	76 x 54	1
PC5243 0895400	89 x 54	1
PC5243 0897600	89 x 76	1
PC5243 1085400	108 x 54	1
PC5243 1087600	108 x 76	1
PC5243 1088900	108 x 89	1

PC3

Straight Male Connector

Carbon x Male Thread



ITEM	SIZE	PACK
PC4243G0120300	12 x 3/8"	5
PC4243G0150400	15 x 1/2"	5
PC4243G0180400	18 x 1/2"	5
PC4243G0180600	18 x 3/4"	5
PC4243G0220600	22 x 3/4"	5
PC4243G0280800	28 x 1"	5
PC4243G0351000	35 x 1.1/4"	1
PC4243G0421200	42 x 1.1/2"	1
PC4243G0541600	54 x 2mm	1

PC2

Straight Female Connector

Carbon x Female Thread



ITEM	SIZE	PACK
PC4270G0120400	12 x 3/8"	5
PC4270G0150400	15 x 1/2"	5
PC4270G0180400	18 x 1/2"	5
PC4270G0180600	18 x 3/4"	5
PC4270G0220600	22 x 3/4"	5
PC4270G0280800	28 x 1"	5

PC5087

Crossover Straight



ITEM	SIZE	PACK
PC5087 0150000	15mm	5
PC5087 0180000	18mm	5
PC5087 0220000	22mm	5
PC5087 0280000	28mm	5

PC12

90° Bend

Carbon x Carbon



ITEM	SIZE	PACK
PC5002 0120000	12mm	10
PC5002 0150000	15mm	10
PC5002 0180000	18mm	10
PC5002 0220000	22mm	10
PC5002 0280000	28mm	5
PC5002 0350000	35mm	5
PC5002 0420000	42mm	1
PC5002 0540000	54mm	1
PC5002 0760000	76mm	1
PC5002 0890000	89mm	1
PC5002 1080000	108mm	1

PC14 90° Bend with Female Thread

Carbon x Female Thread



ITEM	SIZE	PACK
PC4002G0150400	15 x 1/2"	5
PC4002G0180400	18 x 1/2"	5
PC4002G0220600	22 x 3/4"	5
PC4002G0280800	28 x 1"	5

PC12S 90° Street Bend

Male Carbon x Carbon



ITEM	SIZE	PACK
PC5001 0120000	12mm	10
PC5001 0150000	15mm	10
PC5001 0180000	18mm	10
PC5001 0220000	22mm	10
PC5001 0280000	28mm	5
PC5001 0350000	35mm	5
PC5001 0420000	42mm	5
PC5001 0540000	54mm	1
PC5001 0760000	76mm	1
PC5001 0890000	89mm	1
PC5001 1080000	108mm	1

PC21 45° Obtuse Street Bend

Male Carbon x Carbon



ITEM	SIZE	PACK
PC5041 0150000	15mm	10
PC5041 0180000	18mm	10
PC5041 0220000	22mm	10
PC5041 0280000	28mm	5
PC5041 0350000	35mm	5
PC5041 0420000	42mm	5
PC5041 0540000	54mm	1
PC5041 0760000	76mm	1
PC5041 0890000	89mm	1
PC5041 1080000	108mm	1

PC21S 45° Obtuse Bend

Carbon x Carbon



ITEM	SIZE	PACK
PC5040 0150000	15mm	10
PC5040 0180000	18mm	10
PC5040 0220000	22mm	10
PC5040 0280000	28mm	5
PC5040 0350000	35mm	5
PC5040 0420000	42mm	5
PC5040 0540000	54mm	1
PC5040 0760000	76mm	1
PC5040 0890000	89mm	1
PC5040 1080000	108mm	1

PC13

90° Bend with Male Thread

Carbon x Male Thread



ITEM	SIZE	PACK
PC4001G0120300	12 x 3/8"	5
PC4001G0150400	15 x 1/2"	10
PC4001G0180400	18 x 1/2"	5
PC4001G0220600	22 x 3/4"	5
PC4001G0280800	28 x 1"	5
PC4001G0351000	35 x 1.1/2"	1
PC4001G0421200	42 x 1.1/2"	1
PC4001G0541600	54 x 2"	1

PC4090

90° Elbow with Female Thread

Carbon x Female Thread



ITEM	SIZE	PACK
PC4090G0150400	15 x 1/2"	5
PC4090G0180400	18 x 1/2"	5
PC4090G0220400	22 x 1/2"	5
PC4090G0220600	22 x 3/4"	5
PC4090G0280800	28 x 1"	5

PC24

Tee - Equal

Carbon x Carbon



ITEM	SIZE	PACK
PC5130 0121212	12mm	10
PC5130 0151515	15mm	10
PC5130 0181818	18mm	10
PC5130 0222222	22mm	10
PC5130 0282828	28mm	5
PC5130 0353535	35mm	1
PC5130 0424242	42mm	1
PC5130 0545454	54mm	1
PC5130 0767676	76mm	1
PC5130 0898989	89mm	1
PC5130 10800EQ	108mm	1

PC30

Tee - Female Branch

Carbon x Carbon x Female Thread



ITEM	SIZE	PACK
PC4130G0150415	15 x 15 x 1/2"	5
PC4130G0180418	18 x 18 x 1/2"	5
PC4130G0220422	22 x 22 x 1/2"	5
PC4130G0280428	28 x 28 x 1/2"	5
PC4130G0280628	28 x 28 x 3/4"	5
PC4130G0350435	35 x 35 x 1/2"	1
PC4130G0420442	42 x 42 x 1/2"	1
PC4130G0540454	54 x 54 x 1/2"	1
PC5130G0760676	76 x 76 x 3/4"	1
PC5130G0890689	89 x 89 x 3/4"	1
PC5130G10806108	108 x 108 x 3/4"	1

PC26

Tee - Reduced Ends

Carbon x Carbon



ITEM	SIZE	PACK
PC5130 0121512	12 x 12 x 15mm	5

PC25

Tee - Reduced Branch

Carbon x Carbon



ITEM	SIZE	PACK
PC5130 0151215	15 x 15 x 12mm	5
PC5130 0181218	18 x 18 x 12mm	5
PC5130 0181518	18 x 18 x 15mm	5
PC5130 0221222	22 x 22 x 12mm	5
PC5130 0221522	22 x 22 x 15mm	5
PC5130 0221822	22 x 22 x 18mm	5
PC5130 0281528	28 x 28 x 15mm	5
PC5130 0281828	28 x 28 x 18mm	5
PC5130 0282228	28 x 28 x 22mm	5
PC5130 0351535	35 x 35 x 15mm	1
PC5130 0352235	35 x 35 x 22mm	1
PC5130 0352835	35 x 35 x 28mm	1
PC5130 0422242	42 x 42 x 22mm	1
PC5130 0422842	42 x 42 x 28mm	1
PC5130 0423542	42 x 42 x 35mm	1
PC5130 0542254	54 x 54 x 22mm	1
PC5130 0542854	54 x 54 x 28mm	1

PC5130 0543554	54 x 54 x 35mm	1
PC5130 0544254	54 x 54 x 42mm	1
PC5130 0762876	76 x 76 x 28mm	1
PC5130 0763576	76 x 76 x 35mm	1
PC5130 0764276	76 x 76 x 42mm	1
PC5130 0765476	76 x 76 x 54mm	1
PC5130 0892889	89 x 89 x 28mm	1
PC5130 0893589	89 x 89 x 35mm	1
PC5130 0894289	89 x 89 x 42mm	1
PC5130 0895489	89 x 89 x 54mm	1
PC5130 0897689	89 x 89 x 76mm	1
PC5130 10854108	108 x 108 x 54mm	1
PC5130 10876108	108 x 108 x 76mm	1
PC5130 10889108	108 x 108 x 89mm	1

PC61

Stop End

Carbon



ITEM	SIZE	PACK
PC5301 0150000	15mm	10
PC5301 0180000	18mm	10
PC5301 0220000	22mm	10
PC5301 0280000	28mm	5
PC5301 0350000	35mm	1
PC5301 0420000	42mm	1
PC5301 0540000	54mm	1
PC5301 0760000	76mm	1
PC5301 0890000	89mm	1
PC5301 1080000	108mm	1

PC50 Male Street Bend



ITEM	SIZE	PACK
PC5030 0150000	15mm	5
PC5030 0180000	18mm	5
PC5030 0220000	22mm	5

PC52 PN16 Flange

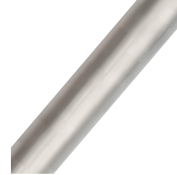
Carbon x Carbon



ITEM	SIZE	PACK
PC5230B0760000	76mm	1
PC5230B0890000	89mm	1
PC5230B1080000	108mm	1
PC5230D0760000	76mm	1
PC5230D0890000	89mm	1
PC5230D1080000	108mm	1

PC Carbon Steel Tube

Carbon



ITEM	SIZE	PACK
PCTUB-EU15	15mm	1
PCTUB-EU18	18mm	1
PCTUB-EU22	22mm	1
PCTUB-EU28	28mm	1
PCTUB-EU35	35mm	1
PCTUB-EU42	42mm	1
PCTUB-EU54	54mm	1
PCTUB-EU76	76mm	1
PCTUB-EU89	89mm	1
PCTUB-EU108	108mm	1

>B< Press Inox Range



>B< Press Inox is a stainless steel fitting, manufactured with a corrosion resistant steel material for aggressive water applications. A versatile press fitting system for use on stainless steel tubes in accordance with EN 10312- 1 & 2 and available in sizes 15 to 108mm.

Leak before press feature

Conex Bänninger has developed a unique leak before press feature, a specially designed EPDM O-ring. It has a reduced section in two positions causing leaks at low pressures when not pressed (from 0.1 to 5.0 bar). When the fitting is pressed, the O-ring material compresses, filling the gaps, securing a leak-free path. Therefore there is no need to go to full test pressure to check that all fittings have been pressed.

Applications & Technical Information

Drinking water	Y
Heating and chilled water systems	Y
Compressed Air	Y
Available Sizes	15mm to 108mm
Warranty	5 years, 10 years with >B< press tube
Material	Stainless Steel EPDM O-ring
Max Operating Temperature	-35°C to 110°C
Max Hydrostatic Pressure	16 bar
Profile	>B< Profile 15-54mm Mprofile 76mm -108mm

For more details contact our technical team.

PS1

Straight Coupler

Stainless Steel x Stainless Steel



ITEM	SIZE	PACK
PS5270 0150000	15mm	10
PS5270 0220000	22mm	10
PS5270 0280000	28mm	5
PS5270 0350000	35mm	5
PS5270 0420000	42mm	2
PS5270 0540000	54mm	2
PS5270 0760000	76mm	2
PS5270 0890000	89mm	2
PS5270 1080000	108mm	2

PS1S

Slip Coupler

Stainless Steel x Stainless Steel



ITEM	SIZE	PACK
PS4275 0150000	15mm	10
PS4275 0220000	22mm	10
PS4275 0280000	28mm	5
PS4275 0350000	35mm	5
PS4275 0420000	42mm	2
PS4275 0540000	54mm	2

PS2

Female Straight Coupler

Stainless Steel x Female Thread



ITEM	SIZE	PACK
PS4270G0150400	15 x 1/2"	10
PS4270G0220400	22 x 1/2"	10
PS4270G0220600	22 x 3/4"	10
PS4270G0280800	28 x 1"	5
PS4270G0351000	35 x 1.1/4"	5
PS4270G0421200	42 x 1.1/2"	2
PS4270G0541600	54 x 2"	2

PS3

Male Straight Coupler

Stainless Steel x Male Thread



ITEM	SIZE	PACK
PS4273G0150400	15 x 1/2"	10
PS4273G0220400	22 x 1/2"	10
PS4273G0220600	22 x 3/4"	10
PS4273G0280800	28 x 1"	5
PS4273G0351000	35 x 1.1/4"	5
PS4273G0421200	42 x 1.1/2"	2
PS4273G0541600	54 x 2"	2

PS5

Cross Over Coupler (Long)



ITEM	SIZE	PACK
PS5088 0150000	15mm	5
PS5088 0220000	22mm	2
PS5088 0280000	28mm	2

PS6

Fitting Reducer

Male Stainless Steel x Stainless Steel



ITEM	SIZE	PACK
PS5243 0221500	22 x 15mm	10
PS5243 0281500	28 x 15mm	5
PS5243 0282200	28 x 22mm	5
PS5243 0352200	35 x 22mm	2
PS5243 0352800	35 x 28mm	2
PS5243 0422800	42 x 28mm	2
PS5243 0423500	42 x 35mm	2
PS5243 0542800	54 x 28mm	2
PS5243 0543500	54 x 35mm	2
PS5243 0544200	54 x 42mm	2
PS5243 0765400	76 x 54mm	2
PS5243 0895400	89 x 54mm	2
PS5243 0897600	89 x 76mm	2
PS5243 1085400	108 x 54mm	2
PS5243 1087600	108 x 76mm	2
PS5243 1088900	108 x 89mm	2

PS12

90° Bend

Stainless Steel x Stainless Steel



ITEM	SIZE	PACK
PS5002 0150000	15mm	10
PS5002 0220000	22mm	10
PS5002 0280000	28mm	5
PS5002 0350000	35mm	5
PS5002 0420000	42mm	2
PS5002 0540000	54mm	2
PS5002 0760000	76mm	2
PS5002 0890000	89mm	2
PS5002 1080000	108mm	2

PS12S

90° Street Bend

Male Stainless Steel x Stainless Steel



ITEM	SIZE	PACK
PS5001 0150000	15mm	10
PS5001 0220000	22mm	10
PS5001 0280000	28mm	5
PS5001 0350000	35mm	5
PS5001 0420000	42mm	2
PS5001 0540000	54mm	2

PS13

Bend With Male Thread

Stainless Steel x Male Thread



ITEM	SIZE	PACK
PS4001G0150400	15 x 1/2"	10
PS4001G0220600	22 x 3/4"	10
PS4001G0280800	28 x 1"	5
PS4001G0351000	35 x 1.1/4"	5
PS4001G0421200	42 x 1.1/2"	2
PS4001G0541600	54 x 2"	2

PS14

Elbow With Female Thread

Stainless Steel x Female Thread



ITEM	SIZE	PACK
PS4090G0150400	15 x 1/2"	10
PS4090G0220400	22 x 1/2"	10
PS4090G0220600	22 x 3/4"	10
PS4090G0280800	28 x 1"	5

PS14S 90° Bend With Female Thread

Stainless Steel x Female Thread



ITEM	SIZE	PACK
PS4002G0150400	15 x 1/2"	10
PS4002G0220600	22 x 3/4"	10
PS4002G0280800	28 x 1"	5
PS4002G0351000	35 x 1.1/4"	5

PS20 Male Street Bend



ITEM	SIZE	PACK
PS5030 0150000	15mm	5
PS5030 0220000	22mm	5
PS5030 0280000	28mm	5
PS5030 0350000	35mm	2
PS5030 0420000	42mm	2
PS5030 0540000	54mm	2

PS21 Obtuse Elbow

Stainless Steel x Stainless Steel



ITEM	SIZE	PACK
PS5041 0150000	15mm	10
PS5041 0220000	22mm	10
PS5041 0280000	28mm	5
PS5041 0350000	35mm	5
PS5041 0420000	42mm	2
PS5041 0540000	54mm	2
PS5041 0760000	76mm	2
PS5041 0890000	89mm	2
PS5041 1080000	108mm	2

PS21S Obtuse Street Elbow

Male Stainless Steel x Stainless Steel



ITEM	SIZE	PACK
PS5040 0150000	15mm	10
PS5040 0220000	22mm	10
PS5040 0280000	28mm	5
PS5040 0350000	35mm	5
PS5040 0420000	42mm	2
PS5040 0540000	54mm	2
PS5040 0760000	76mm	2
PS5040 0890000	89mm	2
PS5040 1080000	108mm	2

PS24 Tee - Equal

Stainless Steel x Stainless Steel



ITEM	SIZE	PACK
PS5130 0151515	15mm	10
PS5130 0222222	22mm	5
PS5130 0282828	28mm	5
PS5130 0353535	35mm	5
PS5130 0424242	42mm	2
PS5130 0545454	54mm	2
PS5130 0760000	76mm	2
PS5130 0890000	89mm	2
PS5130 1080000	108mm	2

PS25

Tee - Reduced Branch

Stainless Steel x Stainless Steel



ITEM	SIZE	PACK
PS5130 0221522	22 x 22 x 15mm	10
PS5130 0281528	28 x 28 x 15mm	5
PS5130 0282228	28 x 28 x 22mm	5
PS5130 0351535	35 x 35 x 15mm	2
PS5130 0352235	35 x 35 x 22mm	2
PS5130 0352835	35 x 35 x 28mm	2
PS5130 0422242	42 x 42 x 22mm	2
PS5130 0422842	42 x 42 x 28mm	2
PS5130 0423542	42 x 42 x 35mm	2
PS5130 0542254	54 x 54 x 22mm	2
PS5130 0542854	54 x 54 x 28mm	2
PS5130 0543554	54 x 54 x 35mm	2
PS5130 0762276	76 x 76 x 22mm	2
PS5130 0762876	76 x 76 x 28mm	2
PS5130 0763576	76 x 76 x 35mm	2
PS5130 0764276	76 x 76 x 42mm	2
PS5130 0765476	76 x 76 x 54mm	2
PS5130 0892289	89 x 89 x 22mm	2
PS5130 0892889	89 x 89 x 28mm	2
PS5130 0893589	89 x 89 x 35mm	2
PS5130 0894289	89 x 89 x 42mm	2
PS5130 0895489	89 x 89 x 54mm	2
PS5130 0897689	89 x 89 x 76mm	2

PS30

Tee With Female Branch

Stainless Steel x Female Thread



ITEM	SIZE	PACK
PS4130G0150415	15 x 15mm x 1/2"	10
PS4130G0220422	22 x 22mm x 1/2"	10
PS4130G0220622	22 x 22mm x 3/4"	10
PS4130G0280428	28 x 28mm x 1/2"	5
PS4130G0280628	28 x 28mm x 3/4"	5
PS4130G0280828	28 x 28mm x 1"	5
PS4130G0350435	35 x 35mm x 1/2"	5
PS4130G0351035	35 x 35mm x 1.1/4"	5
PS4130G0420442	42 x 42mm x 1/2"	2
PS4130G0421242	42 x 42mm x 1.1/2"	2
PS4130G0540454	54 x 54mm x 1/2"	2
PS4130G0541654	54 x 54mm x 2"	2

PS44

Wall Plate Elbow

Stainless Steel x Male Thread



ITEM	SIZE	PACK
PS4471G0150400	15 x 1/2"	10
PS4471G0220600	22 x 3/4"	5
PS4471G0280800	28 x 1"	5

PS55

Expansion Joint

Stainless Steel x Stainless Steel



ITEM	SIZE	PACK
PS5500 0150000	15mm	1
PS5500 0220000	22mm	1
PS5500 0280000	28mm	1
PS5500 0350000	35mm	1
PS5500 0420000	42mm	1
PS5500 0540000	54mm	1

PS61

Stop End

Stainless Steel



ITEM	SIZE	PACK
PS5301 0150000	15mm	10
PS5301 0220000	22mm	10
PS5301 0280000	28mm	5
PS5301 0350000	35mm	1
PS5301 0420000	42mm	1
PS5301 0540000	54mm	1

P77282

Klauke MAP 1 Mini Battery Press Tool and jaws



ITEM	SIZE	PACK
P77282 00001UK	-	1

P77265

Klauke UAP2 Battery Press Tool



ITEM	SIZE	PACK
P77265 00000UK	-	1

P77281

Klauke UNP2 Press Machine



ITEM	SIZE	PACK
P77281 00000UK	-	1

P77300 Novopress EC03 Press Tool



ITEM	SIZE	PACK
P77300 00001UK	-	1

P77282 Klauke Press Jaws for MAP1 mini



ITEM	SIZE	PACK
P77282 0120000	12mm	1
P77282 0150000	15mm	1
P77282 0180000	18mm	1
P77282 0220000	22mm	1
P77282 0280000	28mm	1

P77267 Klauke Press Jaw fr UAP2, UNP2



ITEM	SIZE	PACK
P77267 0120000	12mm	1
P77267 0150000	15mm	1
P77267 0180000	18mm	1
P77267 0220000	22mm	1
P77267 0280000	28mm	1
P77267 0350000	35mm	1
P77267R0420000	42mm	1
P77267R0540000	54mm	1

P77268 Klauke Press Jaw set in steel case for UAP2, UNP2



ITEM	SIZE	PACK
P77268 0152800	-	1

P77300 Novopress Collars for EC03



ITEM	SIZE	PACK
P77300 0670000	67mm	1
P77300 0760000	76mm	1
P77300 0890000	89mm	1
P77300 1080000	108mm	1

P77300 Novopress Adaptors for EC03



ITEM	SIZE	PACK
P77300 3020000	66.7mm	1
P77300 3210000	76-108mm	1
P77300 3220000	108mm	1

P77300 Novopress Collars and Adaptor set for EC03



ITEM	SIZE	PACK
P77300 0020000	other	1
P77300 0030000	other	1
P77300 0060000	other	1

P571011 REMS AKKU Press with Li-Ion Battery



ITEM	SIZE	VOLT
P571014 0000UK	-	12

P5701 REMS Jaws for AKKU- Press and Power Press



ITEM	SIZE	PACK
P570107 012000	12mm	1
P570115 015000	15mm	1
P570125 018000	18mm	1
P570135 022000	22mm	1
P570145 028000	28mm	1
P570155 035000	35mm	1

P5783 REMS Jaws for Mini Press



ITEM	SIZE	PACK
P578324 012000	12mm	1
P578328 015000	15mm	1
P578332 018000	18mm	1
P578334 022000	22mm	1
P578335 028000	28mm	1

P5780 REMS Mini Press Li-Ion with Battery

with additional battery



ITEM	VOLT
P578012 0001UK	12

P577010 REMS Power Press with Automatic Circuit Control- Basic Pack



ITEM	
P577010 0000UK	REMS Power Press Acc Auto. Return UK

P571560 REMS Ni-Cd 12v 2,0 A accumulator



ITEM	VOLT
P571560 0000UK	12

P571535 REMS Connector 230V



ITEM	VOLT
P571535 0000UK	250

P5702 REMS Steel Case for Jaws



ITEM	
P570295 000000	Steel Case for 6 Jaws
P570290 000000	Steel Case for 2 Jaws

Pushfit Range



>B< Push Range



>B< Push is a unique, compact and easy to use pushfit fitting - for use on multiple tubes including copper, PE-X, MLP, PB and Carbon steel. >B< Push is available in sizes 12, 15, 16, 18, 20, 22, 25, 26 and 28mm.

>B< Push is manufactured from low lead corrosion-resistant brass with a high resistance to dezincification (DZR). Designed with a high grade EPDM O-ring and stainless steel grab ring with a unique sealing insert for use on MLP pipes*. Conforms to normal operating parameters for metallic tubes: with working temperatures between -20°C & 95°C

>B< Push is a demountable and reusable fitting with an easy to use professional release tool. Suitable for use in a variety of applications including hot and cold drinking water, heating and chilled water systems.

Applications & Technical Information

Drinking water	Y
Sanitary water	Y
Heating and chilled water systems	Y
Available Sizes	12, 15, 16, 18, 20, 22, 25, 26, 28
Warranty	30 years
Operating Parameters	16 bar @ 20 °C 10 bar @ 95 °C
Material	Body: Low Lead DZR O-Ring: EPDM Grab Ring: Stainless Steel
Water / Glycol	50/50 to -20°C

*Pipes manufactured in accordance with BS EN ISO 21003: 2. Pipe material of: PE-X/AL/PE-X or PE-RT/AL/PE-RT using only Conex >B< Push MLP inserts. Please refer to technical guide. For more details contact our technical team

BM8270

Coupler

Push-Fit × Push-Fit



ITEM	SIZE	PACK
BM8270 0120000	12mm	10
BM8270 0150000	15mm	10
BM8270 0160000	16mm	10
BM8270 0180000	18mm	10
BM8270 0200000	20mm	10
BM8270 0220000	22mm	10
BM8270 0250000	25mm	5
BM8270 0260000	26mm	5
BM8270 0280000	28mm	5

BM8240

Reduced Coupler

Push-Fit × Push-Fit



ITEM	SIZE	PACK
BM8240 0151200	15 x 12mm	10
BM8240 0161200	16 x 12mm	10
BM8240 0161500	16 x 15mm	10
BM8240 0181500	18 x 15mm	10
BM8240 0201600	20 x 16mm	10
BM8240 0201800	20 x 18mm	10
BM8240 0222000	20 x 22mm	10
BM8240 0221500	22 x 15mm	10
BM8240 0221800	22 x 18mm	10
BM8240 0252000	25 x 20mm	5
BM8240 0262000	26 x 20mm	5
BM8240 0282200	28 x 22mm	5

BM8270G

Straight Female Connector

Push-Fit × Female Thread



ITEM	SIZE	PACK
BM8270G0120400	12mm x 1/2"	5
BM8270G0150400	15mm x 1/2"	5
BM8270G0150600	15mm x 3/4"	5
BM8270G0160400	16mm x 1/2"	5
BM8270G0160600	16mm x 3/4"	5
BM8270G0180400	18mm x 1/2"	5
BM8270G0180600	18mm x 3/4"	5
BM8270G0200400	20mm x 1/2"	5
BM8270G0200600	20mm x 3/4"	5
BM8270G0220400	22mm x 1/2"	5
BM8270G0220600	22mm x 3/4"	5
BM8270G0220800	22mm x 1"	5
BM8270G0250400	25mm x 1/2"	5
BM8270G0250800	25mm x 1"	5
BM8270G0250600	25mm x 3/4"	5
BM8270G0260600	26mm x 3/4"	5
BM8270G0260800	26mm x 1"	5
BM8270G0280800	28mm x 1"	5

BM8243G

Straight Male Connector

Push-Fit × Male Thread



ITEM	SIZE	PACK
BM8243G0120400	12mm x 1/2"	5
BM8243G0120800	12mm x 1"	5
BM8243G0150400	15mm x 1/2"	5
BM8243G0150600	15mm x 3/4"	5
BM8243G0150800	15mm x 1"	5
BM8243G0160400	16mm x 1/2"	5
BM8243G0160600	16mm x 3/4"	5
BM8243G0160800	16mm x 1"	5
BM8243G0180400	18mm x 1/2"	5
BM8243G0180600	18mm x 3/4"	5
BM8243G0180800	18mm x 1"	5
BM8243G0200400	20mm x 1/2"	5
BM8243G0200600	20mm x 3/4"	5
BM8243G0200800	20mm x 1"	5
BM8243G0220600	22mm x 3/4"	5
BM8243G0220800	22mm x 1"	5
BM8243G0250400	25mm x 1/2"	5
BM8243G0250600	25mm x 3/4"	5
BM8243G0250800	25mm x 1"	5
BM8243G0260600	26mm x 3/4"	5
BM8243G0260800	26mm x 1"	5
BM8243G0280800	28mm x 1"	5

BM8350

Tank Connector

Push-Fit × Male Thread



ITEM	SIZE	PACK
BM8350 0150400	15mm x 1/2"	10
BM8350 0220400	22mm x 1/2"	10
BM8350 0280800	28mm x 1"	10

BM8243

Fitting Reducer

Push-Fit × Copper



ITEM	SIZE	PACK
BM8243 0181500	18 x 15mm	10
BM8243 0201600	20 x 16mm	10
BM8243 0221500	22 x 15mm	10
BM8243 0221800	22 x 18mm	10

BM8090

Elbow

Push-Fit × Push-Fit



ITEM	SIZE	PACK
BM8090 0120000	12mm	10
BM8090 0150000	15mm	10
BM8090 0160000	16mm	10
BM8090 0180000	18mm	10
BM8090 0200000	20mm	10
BM8090 0220000	22mm	10
BM8090 0250000	25mm	5
BM8090 0260000	26mm	5
BM8090 0280000	28mm	5

BM8092G

Male Elbow

Push-Fit × Male Thread



ITEM	SIZE	PACK
BM8092G0150400	15mm x 1/2"	10
BM8092G0160400	16mm x 1/2"	10
BM8092G0160600	16mm x 3/4"	10
BM8092G0180400	18mm x 1/2"	10
BM8092G0180600	18mm x 3/4"	10
BM8092G0200600	20mm x 3/4"	10
BM8092G0220600	22mm x 3/4"	10
BM8092G0250600	25mm x 3/4"	5
BM8092G0260600	26mm x 3/4"	5

BM8090G

Female Elbow

Push-Fit × Female Thread



ITEM	SIZE	PACK
BM8090G0150400	15mm x 1/2"	10
BM8090G0160400	16mm x 1/2"	10
BM8090G0160600	16mm x 3/4"	10
BM8090G0180400	18mm x 1/2"	10
BM8090G0180600	18mm x 3/4"	10
BM8090G0200600	20mm x 3/4"	10
BM8090G0220400	22mm x 1/2"	10
BM8090G0220600	22mm x 3/4"	10
BM8090G0250600	25mm x 3/4"	5
BM8090G0260600	26mm x 3/4"	5

BM8472G

Wallplate Elbow

Push-Fit × Female Thread



ITEM	SIZE	PACK
BM8472G0150400	15mm x 1/2"	5
BM8472G0160400	16mm x 1/2"	5
BM8472G0180400	18mm x 1/2"	5
BM8472G0180600	18mm x 3/4"	5
BM8472G0200600	20mm x 3/4"	5
BM8472G0220600	22mm x 3/4"	5

BM8130

Equal Tee

Push-Fit all ends



ITEM	SIZE	PACK
BM8130 0121212	12mm	10
BM8130 0151515	15mm	10
BM8130 0161616	16mm	10
BM8130 0181818	18mm	10
BM8130 0202020	20mm	10
BM8130 0222222	22mm	10
BM8130 0252525	25mm	5
BM8130 0262626	26mm	5
BM8130 0282828	28mm	5

BM8130 RB Tee, Reduced Branch

Push-Fit all ends



ITEM	SIZE	PACK
BM8130 0201620	20 x 20 x 16mm	10
BM8130 0221522	22 x 22 x 15mm	10
BM8130 0221622	22 x 22 x 16mm	10
BM8130 0221822	22 x 22 x 18mm	10
BM8130 0252025	25 x 25 x 20mm	5
BM8130 0261626	26 x 26 x 16mm	5
BM8130 0262026	26 x 26 x 20mm	5
BM8130 0281528	28 x 28 x 15mm	5
BM8130 0282228	28 x 28 x 22mm	5

BM8130 RE Tee, One End or Branch & End

Push-Fit all ends



ITEM	SIZE	PACK
BM8130 0202016	20 x 16 x 20mm	10
BM8130 0221515	22 x 15 x 15mm	10
BM8130 0222215	22 x 15 x 22mm	10
BM8130 0221818	22 x 18 x 18mm	10
BM8130 0222218	22 x 18 x 22mm	10
BM8130 0282815	28 x 15 x 28mm	5
BM8130 0282822	28 x 22 x 28mm	5

BM8130G Female Branch Tee

Push-Fit x Female Thread



ITEM	SIZE	PACK
BM8130G0150415	15 x 15mm x 1/2"	5
BM8130G0160416	16 x 16mm x 1/2"	5
BM8130G0200420	20 x 20mm x 1/2"	5
BM8130G0220422	22 x 22mm x 1/2"	5
BM8130G0220622	22 x 22mm x 3/4"	5
BM8130G0250625	25 x 25mm x 3/4"	5
BM8130G0260626	26 x 26mm x 3/4"	5
BM8130G0280825	28 x 28mm x 1"	5

BM8301 Stop End

Push-Fit



ITEM	SIZE	PACK
BM8301 0120000	12mm	10
BM8301 0150000	15mm	10
BM8301 0160000	16mm	10
BM8301 0180000	18mm	10
BM8301 0200000	20mm	10
BM8301 0220000	22mm	10
BM8301 0250000	25mm	5
BM8301 0260000	26mm	5
BM8301 0280000	28mm	5

BM8240G

Tap Connector

Push-Fit × Female Thread



ITEM	SIZE	PACK
BM8240G0150400	15mm x 1/2"	5
BM8240G0150600	15mm x 3/4"	5
BM8240G0160400	16mm x 1/2"	5
BM8240G0200400	20mm x 1/2"	5
BM8240G0220600	22mm x 3/4"	5
BM8240G0250600	25mm x 3/4"	5
BM8240G0260600	26mm x 3/4"	5
BM8240G0260800	28mm x 1"	5

Supplied with washer

BM8002G

Bend Tap Connector

Push-Fit × Female Thread



ITEM	SIZE	PACK
BM8002G0150400	15mm x 1/2"	5
BM8002G0150600	15mm x 3/4"	5
BM8002G0160400	16mm x 1/2"	5
BM8002G0200400	20mm x 1/2"	5
BM8002G0220600	22mm x 3/4"	5
BM8002G0250600	25mm x 3/4"	5
BM8002G0260600	26mm x 3/4"	5

BMINSERTMLP

MLP Pipe Fittings Inserts



ITEM	SIZE	PACK
BMINSERTMLP15	15mm	10
BMINSERTMLP16	16mm	10
BMINSERTMLP20	20mm	10
BMINSERTMLP22	22mm	10
BMINSERTMLP25	25mm	10
BMINSERTMLP26	26mm	10
BMINSERTMLP28	28mm	10

BM850

Release Tools



ITEM	SIZE	PACK
BM850 01200000	12mm	5
BM850 01500000	15mm	5
BM850 01600000	16mm	5
BM850 01800000	18mm	5
BM850 02000000	20mm	5
BM850 02200000	22mm	5
BM850 02500000	25mm	5
BM850 02600000	26mm	5
BM850 02800000	28mm	5

Push-Fit Range



Conex Bänninger Push-Fit is a quick and easy to install fitting, suitable for use on hard, half hard and soft copper tubes, in sizes 10, 15, 22 and 28mm.

Push-Fit is demountable and reusable up to 20 times with the use of a professional release tool. It is incredibly versatile across a wide range of applications for the professional plumber, including hot and cold drinking water, heating and chilled water systems.

Conex Bänninger Push-Fit is manufactured with a corrosion resistant body in dezincification resistant (DZR) natural brass finish with only two internal components; a high grade EPDM O-ring and a stainless steel grab ring. The unique grab ring ensures the fitting is firmly orientated but not fixed, allowing turning for system alignment. The fittings also maintain electrical continuity on metallic pipe systems.

Applications & Technical Information

Drinking water	Y
Sanitary water	Y
Heating and chilled water systems	Y
Available Sizes	10, 15, 22, 28
Warranty	25 years
Operating Parameters	-20°C to 95°C 16 bar @ 0-30°C 10 bar @ 65°C 6 bar @ 95°C
Material	Body: DZR Brass O-Ring: EPDM Grab Ring: Stainless Steel
Water / Glycol	50/50 to -20°C
Disconnect and Reuse	x 20

For more details contact our technical team.

ZN8270

Straight Coupler

Push-Fit x Push Fit



ITEM	SIZE	PACK
ZN8270 0100000	10mm	10
ZN8270 0150000	15mm	10
ZN8270 0220000	22mm	10
ZN8270 0280000	28mm	5

ZN8240

Reduced Coupler

Push-Fit x Push Fit



ITEM	SIZE	PACK
ZN8240 0151000	15 x 10mm	10
ZN8240 0221500	22 x 15mm	10

ZN8243

Fitting Reducer

Push-Fit x Copper



ITEM	SIZE	PACK
ZN8243 0151000	15 x 10mm	10
ZN8243 0221500	22 x 15mm	10
ZN8243 0282200	28 x 22mm	10

ZN8090

Elbow

Push-Fit x Push Fit



ITEM	SIZE	PACK
ZN8090 0100000	10mm	10
ZN8090 0150000	15mm	10
ZN8090 0220000	22mm	10
ZN8090 0280000	28mm	5

ZN8001

Street Elbow

Push-Fit x Copper



ITEM	SIZE	PACK
ZN8001 0150000	15mm	10
ZN8001 0220000	22mm	10
ZN8001 0280000	28mm	5

ZN8270G

Straight Female Connector

Push-Fit x BSP Female Thread



ITEM	SIZE	PACK
ZN8270G0150400	15 x 1/2"	5
ZN8270G0220600	22 x 3/4"	5
ZN8270G0280800	28 x 1"	5

ZN8243G

Straight Male Connector

Push-Fit x ISO 7 Male Thread



ITEM	SIZE	PACK
ZN8243G0150400	28 x 1"	5
ZN8243G0220600	22 x 3/4"	5
ZN8243G0280800	28 x 1"	5

ZN8240G

Straight Tap Connector

Push-Fit x ISO 228 Female Thread



ITEM	SIZE	PACK
ZN8240G0150400	15 x 1/2"	5
ZN8240G0150600	15 x 3/4"	5
ZN8240G0220600	22 x 3/4"	5

Supplied with washer

ZN8002G

Bent Tap Connector

Push-Fit x ISO 228 Female Thread



ITEM	SIZE	PACK
ZN8002G0150400	15 x 1/2"	1

ZN8472G

Wall Plate Elbow

Push-Fit x Female Thread



ITEM	SIZE	PACK
ZN8472G0150400	15 x 1/2"	5

ZN8350

Tank Connector

Push-Fit x ISO 228 Male Thread



ITEM	SIZE	PACK
ZN8350 0150400	15 x 1/2"	10
ZN8350 0220600	22 x 3/4"	10
ZN8350 0280800	28 x 1"	5

ZN8130

Equal Tee

Push-Fit all ends



ITEM	SIZE	PACK
ZN8130 0101010	10mm	10
ZN8130 0151515	15mm	10
ZN8130 0222222	22mm	10
ZN8130 0282828	28mm	5

ZN8130

Reduced Branch Tee

Push-Fit all ends



ITEM	SIZE	PACK
ZN8130 0151015	15 x 15 x 10mm	10
ZN8130 0221522	22 x 22 x 15mm	5
ZN8130 0281528	28 x 28 x 15mm	5
ZN8130 0282228	28 x 28 x 22mm	5

ZN8130

Reduced End Tee

Push-Fit all ends



ITEM	SIZE	PACK
ZN8130 0222215	22 x 15 x 22mm	10
ZN8130 0282815	28 x 15 x 28mm	5
ZN8130 0282822	28 x 22 x 28mm	5

ZN8130

Reduced End & Branch Tee

Push-Fit all ends



ITEM	SIZE	PACK
ZN8130 0221515	28 x 15 x 15mm	10
ZN8130 0282222	28 x 22 x 22mm	5

ZN8130G

Female Branch Tee

Push-Fit x Push-Fit x ISO 228 Female Thread



ITEM	SIZE	PACK
ZN8130G0150415	15 x 1/2 x 15mm	5

ZN8301

Stop End

Push-Fit



ITEM	SIZE	PACK
ZN8301 0100000	10mm	10
ZN8301 0150000	15mm	10
ZN8301 0220000	22mm	10
ZN8301 0280000	28mm	5

CP - FSET002 Tool Kit

Plier With 10,15, 22, 28mm Tool Heads In Case



ITEM	SIZE	PACK
CP-FSET002	10, 15, 22, 28mm	1

CP - FPLIER



ITEM	SIZE	PACK
CP-FPLIER	-	1

CP - FHEAD

Tool Head



ITEM	SIZE	PACK
CP-FHEAD10	10mm	1
CP-FHEAD15	15mm	1
CP-FHEAD22	22mm	1
CP-FHEAD28	28mm	1

CP - FLINER

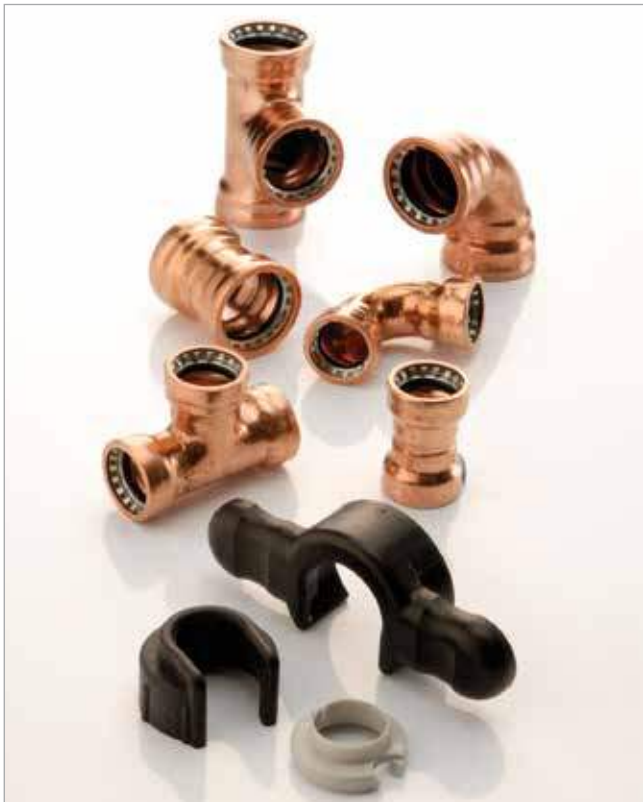
Internal Liner

(for plastic pipes)



ITEM	SIZE	PACK
C183031000PP	10mm - PE-X/PB	25
E203031000PP	15mm - PB	50
E183031000PP	15mm - PE-X	50
G233031000PP	22mm - PE-X/PB	50
H293031000PP	28mm - PB	10

Cuprofit Range



Conex Bänninger Cuprofit Push-fit range is simple to install, demountable and re-useable. The Push-fit concept eliminates the need for flames or flux on site, thus avoiding numerous health and safety issues and saving substantial time during installation. Cuprofit offers a leak-proof, tamper resistant and demountable connection. Cuprofit is available in sizes 10, 15, 22 and 28mm.

Conex Bänninger Cuprofit Push-fit fittings are manufactured from copper or DZR brass bodies and incorporate an EPDM O-ring and Stainless Steel grab ring. Conex Cuprofit fittings are designed for hard, half-hard and soft copper tubes.

Applications & Technical Information

Drinking water	Y
Sanitary water	Y
Heating and chilled water systems	Y
Available Sizes	10, 15, 22, 28
Warranty	25 Years
Operating Parameters	16 bar @ 0-30°C 10 bar @ 65°C 7 bar @ 95°C
Material	Body: Copper or DZR O-Ring: EPDM Grab Ring: Stainless Steel
Water / Glycol	50/50 to -20°C
Disconnect and Reuse	x 20

For more details contact our technical team.

S270

Straight Coupler

Push-Fit x Push-Fit



ITEM	SIZE	PACK
R270 010000000	10mm	5
S270 015000000	15mm	5
S270 022000000	22mm	10
R270 028000000	28mm	1

R090 S090

Elbow

Push-Fit x Push-Fit



ITEM	SIZE	PACK
R090 010000000	10mm	5
S090 015000000	15mm	5
S090 022000000	22mm	5
R090 028000000	28mm	1

R472G

Female Wall Plate Elbow

Push Fit x Female Thread



ITEM	SIZE	PACK
R472G015004000	15 x 1/2"	5

R130

Tee - Equal

Push-Fit All Ends



ITEM	SIZE	PACK
R130 010010010	10mm	5
S130 015015015	15mm	5
S130 022022022	22mm	5
R130 028028028	28mm	1

R130RB

Tee - Reduced Branch

Push-Fit All Ends



ITEM	SIZE	PACK
R130R022010022	22 x 22 x 10mm	5
S130R022015022	22 x 22 x 15mm	5
R130R028022028	28 x 28 x 22mm	1

R130RE

Tee - Reduced End

Push-Fit All Ends



ITEM	SIZE	PACK
R130R022022015	22 x 15 x 22mm	5

R130REB

Tee - Reduced End & Branch

Push-Fit All Ends



ITEM	SIZE	PACK
R130R022015015	22 x 15 x 15mm	5

R243

Fitting Reducer

Push-Fit x Plain Tail (Male Copper)



ITEM	SIZE	PACK
R243 015010000	15 x 10mm	5
R243 022015000	22 x 15mm	5
R243 028022000	28 x 22mm	1

R240

Straight Tap Connector

Push-Fit x Swivel Female Thread Includes Washer



ITEM	SIZE	PACK
R240G015004000	15 x 1/2"	1
R240G022006000	22 x 3/4"	5

R002G

Bent Tap Connector

Push-Fit x Swivel Female Thread Includes Washer



ITEM	SIZE	PACK
R002G015004000	15 x 1/2"	5

R301

Stop End

Push-Fit



ITEM	SIZE	PACK
R301 010000000	10mm	5
R301 015000000	15mm	5
R301 022000000	22mm	5
R301 028000000	28mm	1

R302

Blanking Plug

Plain Tail (Male Copper)



ITEM	SIZE	PACK
R302 015000000	15mm	5
R302 022000000	22mm	5

R243G

Male Straight Connector

Push-Fit x Male Thread



ITEM	SIZE	PACK
R243G015004000	15 x 1/2"	5
R243G022006000	22 x 3/4"	5
R243G028008000	28 x 1"	1
R243G028010000	28 x 1.1/4"	1

R270G

Female Straight Connector

Push-Fit x Female Thread



ITEM	SIZE	PACK
R270G015004000	15 x 1/2"	5
R270G022006000	22 x 3/4"	5
R270G028008000	28 x 1"	1
R270G028010000	28 x 1.1/4"	1

N280G

Male Plain Tail Adaptor

Plain Tail (Male Copper) x Male Thread



ITEM	SIZE	PACK
N280G022006000	22 x 3/4"	5

R350

Tank Connector

Push-Fit x Male Thread



ITEM	SIZE	PACK
R350 022006000	22 x 3/4"	5

N360

Telescopic Connector - Double

Plain Tail Both Ends (Male Copper)



ITEM	SIZE	PACK
N360 015000000	15mm	1
N360 022000000	22mm	1

R370

Telescopic Connector - Single

Push-Fit x Plain Tail (Male Copper)



ITEM	SIZE	PACK
R370 015000000	15mm	1
R370 022000000	22mm	1
R370 028000000	28mm	1

N746

Draining Tap

Plain Tail (Male Copper)



ITEM	SIZE	PACK
N746 015000000	15mm	10

R720

Straight Servicing Valve

Push-Fit x Push-Fit



ITEM	SIZE	PACK
R720 015000000	15mm	2

R717

Straight Washing Machine Valve

Push-Fit x Male Thread



ITEM	SIZE	PACK
R717 015006000	15 x 3/4"	1

R204

Lever Ball Valve

Push-Fit x Male Thread



ITEM	SIZE	PACK
R204 022000000	22mm	1

R850 S850

Release Tool



ITEM	SIZE	PACK
S850 022015010	22 x 15 x 10mm	1
R850 022015010	22 x 15 x 10mm	1

Threaded Range



Series 3000 Range Red Brass Fitting



Conex Series 3000 is a range of red brass threaded fittings available in sizes 1/4" - 2". Fittings are manufactured in accordance with EN 1254 (a standard relating to the manufacture of malleable iron fittings) and threaded to fit ISO 7.

Applications & Technical Information

Refrigeration and air-conditioning	Y
Available Sizes	1/4" to 2"
Operating Parameters 1/4" to 3/4"	25 bar @ 120° C 16 bar @ 225°
Operating Parameters 1" to 2"	16 bar @ 120° C 10 bar @ 225° C
Operating Parameters 2" to 4"	10 bar @ 120° C 6 bar @ 225° C
Material	Red brass

For more details contact our technical team.

3090

Female Elbow

Female Thread x Female Thread



ITEM	SIZE	PACK
3090 002000000	1/4"	10
3090 003000000	3/8"	10
3090 004000000	1/2"	10
3090 006000000	3/4"	10
3090 008000000	1"	5
3090 010000000	1.1/4"	1
3090 012000000	1.1/2"	1
3090 016000000	2"	1

3090

Reduced Female Elbow

Female Thread x Female Thread



ITEM	SIZE	PACK
3090 006004000	3/4 x 1/2"	10
3090 008006000	1 x 3/4"	10

3092

Male x Female Elbow

Male Thread x Female Thread



ITEM	SIZE	PACK
3092 002000000	1/4"	10
3092 003000000	3/8"	10
3092 004000000	1/2"	10
3092 006000000	3/4"	10
3092 008000000	1"	5
3092 010000000	1.1/4"	1
3092 012000000	1.1/2"	1
3092 016000000	2"	1

3098

Union Elbow Coned Joint

Female Thread x Male Thread



ITEM	SIZE	PACK
3098 003000000	3/8"	10
3098 004000000	1/2"	10
3098 006000000	3/4"	10
3098 008000000	1"	10

3121

Obtuse Elbow

Male Thread x Female Thread



ITEM	SIZE	PACK
3121 003000000	3/8"	10
3121 004000000	1/2"	10
3121 006000000	3/4"	10
3121 008000000	1"	10
3121 010000000	1.1/4"	1
3121 012000000	1.1/2"	1

3130EQ

Tee - Equal

Female Thread All Ends



ITEM	SIZE	PACK
3130 002002002	1/4"	10
3130 003003003	3/8"	10
3130 004004004	1/2"	10
3130 006006006	3/4"	5
3130 008008008	1"	1
3130 010010010	1.1/4"	1
3130 012012012	1.1/2"	1
3130 016016016	2"	1

3180

Cross - Equal

Female All Ends



ITEM	SIZE	PACK
3180 004000000	1/2"	10
3180 006000000	3/4"	10

3240

Reduced Straight Coupler

Female Thread x Female Thread



ITEM	SIZE	PACK
3240 003002000	3/8 x 1/4"	10
3240 004003000	1/2 x 3/8"	10
3240 006004000	3/4 x 1/2"	10
3240 008004000	1 x 1/2"	10
3240 008006000	1 x 3/4"	10
3240 010006000	1.1/4 x 3/4"	5
3240 010008000	1.1/4 x 1"	5
3240 012008000	1.1/2 x 1"	1
3240 012010000	1.1/2 x 1.1/4"	1
3240 016012000	2 x 1.1/2"	1

3241

Reduced Bush

Male Thread x Female Thread



ITEM	SIZE	PACK
3241 003002000	3/8 x 1/4"	10
3241 004002000	1/2 x 1/4"	10
3241 004003000	1/2 x 3/8"	10
3241 006002000	3/4 x 1/4"	10
3241 006003000	3/4 x 3/8"	10
3241 006004000	3/4 x 1/2"	10
3241 008003000	1 x 3/8"	10
3241 008004000	1 x 1/2"	10
3241 008006000	1 x 3/4"	10
3241 010004000	1.1/4 x 1/2"	1
3241 010006000	1.1/4 x 3/4"	1
3241 010008000	1.1/4 x 1"	1
3241 012004000	1.1/2 x 1/2"	1
3241 012006000	1.1/2 x 3/4"	1
3241 012008000	1.1/2 x 1"	1
3241 012010000	1.1/2 x 1.1/4"	1
3241 016004000	2 x 1/2"	1
3241 016006000	2 x 3/4"	1
3241 016008000	2 x 1"	1
3241 016010000	2 x 1.1/4"	1
3241 016012000	2 x 1.1/2"	1
3241 020016000	2.1/2 x 2"	1
3241 024016000	3 x 2"	1

3245

Reduced Hexagon Nipple

Male Thread x Male Thread



ITEM	SIZE	PACK
3245 004003000	1/2 x 3/8"	10
3245 006004000	3/4 x 1/2"	10
3245 008006000	1 x 3/4"	10
3245 010008000	1.1/4 x 1"	1

3270

Straight Coupler

Female Thread



ITEM	SIZE	PACK
3270 002000000	1/4"	10
3270 003000000	3/8"	10
3270 004000000	1/2"	10
3270 006000000	3/4"	10
3270 008000000	1"	10
3270 010000000	1.1/4"	5
3270 012000000	1.1/2"	1
3270 016000000	2"	1
3270 020000000	2.1/2"	1

3280

Hexagon Nipple

Male Thread x Male Thread



ITEM	SIZE	PACK
3280 002000000	1/4"	10
3280 003000000	3/8"	10
3280 004000000	1/2"	10
3280 006000000	3/4"	10
3280 008000000	1"	10
3280 010000000	1.1/4"	1
3280 012000000	1.1/2"	1
3280 016000000	2"	1
3280 020000000	2.1/2"	1

3290

Beaded Plug

Male Thread



ITEM	SIZE	PACK
3290 002000000	1/4"	10
3290 003000000	3/8"	10
3290 004000000	1/2"	10
3290 006000000	3/4"	10
3290 008000000	1"	10
3290 010000000	1.1/4"	1
3290 012000000	1.1/2"	1
3290 016000000	2"	1

3291

Plain Plug

Male Thread



ITEM	SIZE	PACK
3291 002000000	1/4"	10
3291 003000000	3/8"	10
3291 004000000	1/2"	10
3291 006000000	3/4"	10
3291 008000000	1"	10
3291 010000000	1.1/4"	1
3291 012000000	1.1/2"	1
3291 016000000	2"	1
3291 020000000	2.1/2"	1

3301

Blank Cap

Female Thread



ITEM	SIZE	PACK
3301 004000000	1/2"	10
3301 006000000	3/4"	10
3301 008000000	1"	10
3301 010000000	1.1/4"	1
3301 012000000	1.1/2"	1
3301 016000000	2"	1

3310 Brass Locknut

Female Thread



ITEM	SIZE	PACK
3310 002000000	1/4"	10
3310 004000000	1/2"	10
3310 006000000	3/4"	10
3310 008000000	1"	10
3310 010000000	1.1/4"	1
3310 012000000	1.1/2"	1
3310 016000000	2"	1

3330 Female Straight Union Coupler (Flat Joint)

Female Thread x Female Thread



ITEM	SIZE	PACK
3330R010000000	1.1/4"	1

3331 Male x Female Straight Union Connector (Flat Joint)

Male Thread x Female Thread



ITEM	SIZE	PACK
3331 004000000	1/2"	10
3331 008000000	1"	10
3331 010000000	1.1/4"	1
3331R012000000	1.1/2"	1

3340 Female Straight Union Coupler (Coned Joint)

Female Thread x Female Thread



ITEM	SIZE	PACK
3340 002000000	1/4"	10
3340 004000000	1/2"	10
3340 006000000	3/4"	10
3340 008000000	1"	10
3340R010000000	1.1/4"	1
3340R012000000	1.1/2"	1
3340R016000000	2"	1

3341 Male x Female Straight Union Connector (Coned Joint)

Male Thread x Female Thread



ITEM	SIZE	PACK
3341 004000000	1/2"	10
3341 006000000	3/4"	10
3341 008000000	1"	10
3341 010000000	1.1/4"	1
3341R012000000	1.1/2"	1
3341R016000000	2"	1

3471 Female Wall Plate Elbow

Female Thread x Female Thread



ITEM	SIZE	PACK
3471 004000000	1/2"	10

3526

Extension Piece

Female Thread x Female Thread



ITEM	SIZE	PACK
3526 004030000	1/2 x 30mm	10
3526 004040000	1/2 x 40mm	10
3526 004050000	1/2 x 50mm	10
3526 004060000	1/2 x 60mm	10
3526 004080000	1/2 x 80mm	10
3526 006040000	3/4 x 40mm	10
3526 006060000	3/4 x 60mm	10
3526 006080000	3/4 x 80mm	10
3526 008060000	1 x 60mm	10

3531

Copper Running Nipple

Male Thread (Parallel)



ITEM	SIZE	PACK
3531 004000000	1/2"	10

3588

Brass Recessed Plug

Male Thread (Parallel)



ITEM	SIZE	PACK
3588 004000000	1/2"	10
3588 008000000	1"	1



Series 8000 Range Yellow Brass Fitting



Conex Bänninger Series 8000 are yellow brass threaded fittings available in sizes 1/8" - 2". They are manufactured in accordance with EN 1254-4 with threads to ISO 7 EN 10226. This material has been thermally stress-tested and contains approximately 85% copper.

Applications & Technical Information

Hot & Cold Drinking Water	Y
Heating Water	Y
Solar	Y
Gas	Y
Heating Water	Y
Available Sizes	1/8" to 2"
Operating Parameters 1/4" to 3/4"	25 bar @ 120° C 16 bar @ 225° C
Operating Parameters 1" to 2"	16 bar @ 120° C 10 bar @ 225° C
Operating Parameters 2" to 4"	10 bar @ 120° C 6 bar @ 225° C
Material	Yellow Brass

For more details contact our technical team.

8090

Female Elbow

Female Thread x Female Thread



ITEM	SIZE	PACK
8090 002000000	1/4"	10
8090 003000000	3/8"	10
8090 004000000	1/2"	10
8090 006000000	3/4"	10

8092

Male x Female Elbow

Male Thread x Female Thread



ITEM	SIZE	PACK
8092 003000000	3/8"	10
8092 004000000	1/2"	10
8092 008000000	1"	10

8130

Tee - Equal

Female Thread All Ends



ITEM	SIZE	PACK
8130 002002002	1/4"	10
8130 004004004	1/2"	10
8130 006006006	3/4"	10
8130 008008008	1"	5

8241

Reduced Bush

Male Thread x Female Thread



ITEM	SIZE	PACK
8241 003002000	3/8 x 1/4"	10
8241 004002000	1/2 x 1/4"	10
8241 004003000	1/2 x 3/8"	10
8241 006002000	3/4 x 1/4"	10
8241 006003000	3/4 x 3/8"	10
8241 006004000	3/4 x 1/2"	10
8241 008003000	1 x 3/8"	10
8241 008004000	1 x 1/2"	10
8241 008006000	1 x 3/4"	10
8241 010004000	1.1/4 x 1/2"	5
8241 010006000	1.1/4 x 3/4"	5
8241 010008000	1.1/4 x 1"	5
8241 012004000	1.1/2 x 1/2"	5
8241 012006000	1.1/2 x 3/4"	5
8241 012008000	1.1/2 x 1"	5
8241 012010000	1.1/2 x 1.1/4"	5
8241 016008000	2 x 1"	1
8241 016010000	2 x 1.1/4"	1
8241 016012000	2 x 1.1/2"	1

8270 Straight Coupler

Female Thread x Female Thread



ITEM	SIZE	PACK
8270 002000000	1/4"	10
8270 003000000	3/8"	10
8270 004000000	1/2"	10
8270 006000000	3/4"	10
8270 008000000	1"	10
8270 010000000	1.1/4"	10
8270 012000000	1.1/2"	10
8270 016000000	2"	10

8280 Hexagon Nipple

Male Thread x Male Thread



ITEM	SIZE	PACK
8280 001000000	1/8"	10
8280 002000000	1/4"	10
8280 003000000	3/8"	10
8280 004000000	1/2"	10
8280 006000000	3/4"	10
8280 008000000	1"	10
8280 010000000	1.1/4"	10
8280 012000000	1.1/2"	5
8280 016000000	2"	5

8310F Flanged Backnut

Flanged Backnut



ITEM	SIZE	PACK
8310F004000000	1/2"	10
8310F006000000	3/4"	10
8310F008000000	1"	10
8310F010000000	1.1/4"	10

8530 Barrel Nipple

Barrel Nipple

Male Thread x Male Thread x Length (mm)



ITEM	SIZE	PACK
8530 004030000	1/2 x 30mm	10
8531 006040000	3/4 x 40mm	10
8532 008040000	1 x 40mm	10
8533 010060000	1.1/4 x 60mm	10
8530 012060000	1.1/2 x 60mm	10

8531 Running Nipple

Running Nipple

Male Thread (Parallel)



ITEM	SIZE	PACK
8531 003000000	1/4"	10
8531 003000000	3/8"	10
8531 004000000	1/2"	10
8531 006000000	3/4"	10

8595 Flanged Plug



ITEM	SIZE	PACK
8595 002000000	1/4"	10
8595 003000000	3/8"	10
8595 004000000	1/2"	10
8595 006000000	3/4"	10
8595 008000000	1"	10
8595 010000000	1.1/4"	5
8595 012000000	1.1/2"	5
8595 016000000	2"	2

8599 Hex Blank Capnut

Female Thread



ITEM	SIZE	PACK
8599 004000000	1/2"	10
8599 006000000	3/4"	10



Oyster Range



>B< Oyster Range



The >B< Oyster converter is simple in its concept but very versatile and efficient in practice. The only tools you require are the special Oyster pliers and a standard open ended or adjustable spanner, ideal for flame-free installations.

The >B< Oyster converter is designed with a male parallel thread allowing it to be connected to ISO 228 or ISO 7 parallel female threaded fittings or valves without the need for any additional sealant, such as PTFE tape. Sealing is achieved via two EPDM O-rings, one internal to seal on the tube, the other to make the fitting seal. The Oyster bodies are available in yellow brass, red brass or stainless steel.

>B< Oyster fittings can be used on hot and cold water systems, including central heating. These fittings are compatible with EN1057 to a wide range of copper tubes & EN10312 series 1 & 2 to stainless steel tubes.

For more details contact our technical team.

>B< OYSTER ASSEMBLY INSTRUCTIONS:

Tools required:

Cutting tool, deburring tool and flat-faced spanner.

Assembly

- Cut the tube end square, and ensure it retains its shape.
- Deburr the tube, both inside and outside.
- Slide the oyster converter onto the tube, taking care not to damage the 'o' ring. The fitting must have the thread facing the end of the tube.
- Using the pliers, dimple the tube with the projections facing outwards. The recommended number is:

Up to 16mm	3 dimples
18-42mm	4 dimples
54mm	6 dimples
- Slide the fitting up to the dimples, which will retain it on the tube.
- Screw the thread of the fitting into the component until hand tight.
- Using a flat-faced spanner, tighten until metal to metal contact then a further 1/4 turn.



Demounting

- Turn off the water supply.
- Place a suitable receptacle under the joint to be dismantled.
- With suitable flat-faced spanners, undo the joint.
- Slide the >B< oyster converter back from the component.
- Pull the tube from the fitting socket, ensuring any excess water is collected in the receptacle.



Y8243G Oyster Yellow Brass



ITEM	SIZE	PACK
Y8243G01003000	10 x 3/8"	10
Y8243G01504000	15 x 1/2"	10
Y8243G02206000	22 x 3/4"	10
Y8243G02208000	22 x 1"	5
Y8243G02808000	28 x 1"	10

Y4243G Oyster Red Brass



ITEM	SIZE	PACK
Y4243G01504000	15 x 1/2"	10
Y4243G02206000	22 x 3/4"	10
Y4243G02808000	28 x 1"	10
Y4243G03510000	35 x 1.1/4"	5
Y4243G04212000	42 x 1.1/2"	5
Y4243G05416000	54 x 2"	5

Y7243G Oyster Stainless Steel



ITEM	SIZE	PACK
Y7243G01504000	15 x 1/2"	10
Y7243G02808000	28 x 1"	10
Y7243G03510000	35 x 1.1/4"	5
Y7243G04212000	42 x 1.1/2"	5
Y7243G05416000	54 x 2"	5

Y8243V Oyster Nickel Plated



ITEM	SIZE	PACK
Y8243V01504000	15 x 1/2"	10
Y8243V02206000	22 x 3/4"	10

Y3270 Expansion Coupler



ITEM	SIZE	PACK
Y3270 00400000	1/2"	1
Y3270 00800000	1"	1
Y3270 01000000	1.1/4"	1
Y3270 01200000	1.1/2"	1
Y3270 01600000	2"	1

Y77267 Standard Pliers



ITEM	SIZE	PACK
Y77267 00000000	10-28	1

Y77266 Ratchet Pliers

Copper & Stainless Steel



ITEM	SIZE	PACK
Y77266 00000000	10-54	1

End Feed Range



Delcop End Feed Range



Delcop End Feed capillary fittings are available in sizes 6-54mm and are suitable for connecting copper tubes in accordance with EN 1057.

Delcop End Feed fittings are designed for solder and brazing applications but, with the exception of Union fittings with copper tails, which can only be soft soldered. For sizes above 54mm please refer to the section on Delbraze.

Most fittings in the range are manufactured from copper or red brass thereby being immune to dezincification.

Hydraulic working temperatures and pressures based on EN 1254-1 are shown below:

Applications & Technical Information

Drinking water	Y
Sanitary water	Y
Heating and chilled water systems	Y
Compressed air	Y
Gas	Y
Available Sizes	6-54mm
Operating Parameters solder 6-54mm	Water
	Using Tin Silver 95/5%
	25 bar, 0°C to 30°C
	25 bar @ 65°C
	19 bar @ 95°C
Operating Parameters brazed 15mm	16 bar @ 110°C
	Using Tin Lead 50/50% or 60/40%
	16 bar, 0°C to 30°C
	10 bar @ 65°C
	7 bar @ 95°C
Operating Parameters brazed 15mm	6 bar @ 110°C
	Water
	35.1 bar, -20°C to 110°C
	29.8 bar @ 150°C
	15.8 bar @ 200°C
Material	Copper and Red Brass

For more details please contact our technical team.

END FEED ASSEMBLY INSTRUCTIONS:

Tools required:

Tube cutter, deburring tool, blow lamp, abrasive cloth, wire brush, lead free solder, flux.

Assembly

- Ensure the copper tube and fitting sizes are compatible. Cut the tube end square, and ensure it retains its shape.
- Deburr the tube, both inside and outside.
- Clean tube with an abrasive cloth, and fitting socket with a wire brush.
- Apply a thin layer of flux to the tube, and to the fitting socket.
- Insert the tube into the fitting until the tube stop is reached. Rotate the tube or fitting and remove any excess flux where possible.
- Light the blow lamp, and heat the fitting socket until the flux starts to boil. Keep the flame moving over the fitting and tube, do not provide excessive heat.
- Apply lead free solder to the tube-fitting interface until it fills the void.
- As a rule of thumb, a length of solder equivalent to the tube diameter will be adequate for a satisfactory joint.
- Remove the blow lamp, allow to cool and wipe the joint(s) with a damp cloth.
- Flush all residues out of the system.



Demounting

- This fitting system is not demountable.

DC600 Slip Coupler

Copper x Copper



ITEM	SIZE	PACK
5270S015000000	15mm	10
5270S022000000	22mm	10
5270S028000000	28mm	10
5270S035000000	35mm	1
5270S042000000	42mm	1
5270S054000000	54mm	1

DC601 Straight Coupler

Copper x Copper



ITEM	SIZE	PACK
5270 006000000	6mm	10
5270 008000000	8mm	10
5270 010000000	10mm	10
5270 012000000	12mm	10
5270 015000000	15mm	25 A
5270 0220000005	22mm	25 A
5270 028000000	28mm	10
5270 035000000	35mm	10
5270 042000000	42mm	1
5270 054000000	54mm	1

*A range means fast moving products.

DC601R Reduced Straight Coupler

Copper x Copper



ITEM	SIZE	PACK
5240 008006000	8 x 6mm	10
5240 010008000	10 x 8mm	10
5240 015008000	15 x 8mm	10
5240 015010000	15 x 10mm	10
5240 015012000	15 x 12mm	10
5240 022015000	22 x 15mm	10
5240 028015000	28 x 15mm	10
5240 028022000	28 x 22mm	10
5240 035015000	35 x 15mm	1
5240 035022000	35 x 22mm	1
5240 035028000	35 x 28mm	1
5240 042022000	42 x 22mm	1
5240 042028000	42 x 28mm	1
5240 042035000	42 x 35mm	1
5240 054015000	54 x 15mm	1
5240 054022000	54 x 22mm	1
5240 054028000	54 x 28mm	1
5240 054035000	54 x 35mm	1
5240 054042000	54 x 42mm	1

*A range means fast moving products.

DC6012

Fitting Reducer

Male Copper x Copper



ITEM	SIZE	PACK
5243 008006000	8 x 6mm	10
5243 010006000	10 x 6mm	10
5243 010008000	10 x 8mm	10
5243 012008000	12 x 8mm	10
5243 015008000	15 x 8mm	10
5243 015010000	15 x 10mm	10
5243 015012000	15 x 12mm	10
5243 0220150005	22 x 15mm	25 A
5243 028015000	28 x 15mm	10
5243 028022000	28 x 22mm	10
5243 035015000	35 x 15mm	1
5243 035022000	35 x 22mm	1
5243 035028000	35 x 28mm	1
5243 042015000	42 x 15mm	1
5243 042022000	42 x 22mm	1
5243 042028000	42 x 28mm	1
5243 042035000	42 x 35mm	1
5243 054015000	54 x 15mm	1
5243 054022000	54 x 22mm	1
5243 054028000	54 x 28mm	1
5243 054035000	54 x 35mm	1
5243 054042000	54 x 42mm	1

*A range means fast moving products.

DB6072LT

Fitting Reducer

Male Copper x Copper



ITEM	SIZE	PACK
5243L015010000	15 x 10mm	10

DB6011M

Imperial To Metric Adaptor

Male Copper (Imperial) x Copper (Metric)



ITEM	SIZE	PACK
5241 015004000	1/2 x 15mm	10
5241 022006000	3/4 x 22mm	10
5241 028008000	1 x 28mm	10

DB6012IM

Imperial to Metric Adaptor

Male Copper (metric) x Copper (Imperial)



ITEM	SIZE	PACK
5242 022006000	3/4 x 22mm	25
5242 028008000	1 x 28mm	10

*A range means fast moving products.

DC601TC

Straight Tap Connector

Copper x Swivel Female Thread



ITEM	SIZE	PACK
5240G015004000	15 x 1/2"	10 A
5240G015006000	15 x 3/4"	10
5240G022006000	22 x 3/4"	10

Supplied with sealing washer

DC606

45° Elbow

Copper x Copper



ITEM	SIZE	PACK
5041 015000000	15mm	25
5041 022000000	22mm	10
5041 028000000	28mm	10
5041 035000000	35mm	1
5041 042000000	42mm	1
5041 054000000	54mm	1

DC6062

45° Street Elbow

Male Copper x Copper



ITEM	SIZE	PACK
5040 015000000	15mm	25
5040 022000000	22mm	10
5040 028000000	28mm	10
5040 035000000	35mm	1
5040 042000000	42mm	1
5040 054000000	54mm	1

*A range means fast moving products.

DC607

90° Elbow

Copper x Copper



ITEM	SIZE	PACK
5090 006000000	6mm	10
5090 008000000	8mm	10
5090 010000000	10mm	10
5090 012000000	12mm	10
5090 015000000	15mm	25 A
5090 022000000	22mm	10
5090 0220000005	22mm	25 A
5090 028000000	28mm	10
5090 035000000	35mm	1
5090 042000000	42mm	1
5090 054000000	54mm	1

DC607R

Reduced Elbow

Copper x Copper



ITEM	SIZE	PACK
5090 022015000	22 x 15mm	10
5090 028022000	28 x 22mm	10

*A range means fast moving products.

DC607LT

Slow Elbow

Copper x Copper



ITEM	SIZE	PACK
5002A010000000	10mm	10
5002A012000000	12mm	10
5002A015000000	15mm	25
5002A022000000	22mm	10
5002A028000000	28mm	10
5002A035000000	35mm	1
5002A042000000	42mm	1
5002A054000000	54mm	1

DC6072

Street Elbow

Male Copper x Copper



ITEM	SIZE	PACK
5092 010000000	10mm	10
5092 012000000	12mm	10
5092 015000000	15mm	25
5092 022000000	22mm	10
5092 022000005	22mm	25 A
5092 028000000	28mm	10
5092 035000000	35mm	1
5092 042000000	42mm	1
5092 054000000	54mm	1

*A range means fast moving products.

DC6072LT

Street Bend

Male Copper x Copper



ITEM	SIZE	PACK
5001A015000000	15mm	25
5001A022000000	22mm	10
5001A028000000	28mm	10

DC607TC

Bent Tap Connector

Connector x Swivel Female Thread



ITEM	SIZE	PACK
5002G015004000	15 x 1/2"	10
5002G015006000	15 x 3/4"	10
5002G022006000	22 x 3/4"	10

Supplied with washer.

DC6076AB

Female Bent Union Spigot

Copper x Swivel Female Thread



ITEM	SIZE	PACK
4096A022008000	22 x 1"	10

*A range means fast moving products.

DC6076UA

Bent Union Cone

Copper x Swivel Female Thread



ITEM	SIZE	PACK
4096C022008000	22 x 1"	10

DC611

Tee Equal

Copper All Ends



ITEM	SIZE	PACK
5130 006006006	6mm	10
5130 008008008	8mm	10
5130 010010010	10mm	10
5130 012012012	12mm	10
5130 015015015	15mm	25 A
5130 0220220225	22mm	25 A
5130 028028028	28mm	10
5130 035035035	35mm	1
5130 042042042	42mm	1
5130 054054054	54mm	1

*A range means fast moving products.

DC611RB

Tee - Reduced Branch

Copper All Ends



ITEM	SIZE	PACK
5130 015010015	15 x 15 x 10mm	10
5130 015012015	15 x 15 x 12mm	10
5130 022010022	22 x 22 x 10mm	10
5130 022012022	22 x 22 x 12mm	10
5130 0220150225	22 x 22 x 15mm	25 A
5130 028015028	28 x 28 x 15mm	10
5130 028022028	28 x 28 x 22mm	10
5130 035015035	35 x 35 x 15mm	1
5130 035022035	35 x 35 x 22mm	1
5130 035028035	35 x 35 x 28mm	1
5130 042015042	42 x 42 x 15mm	1
5130 042022042	42 x 42 x 22mm	1
5130 042028042	42 x 42 x 28mm	1
5130 042035042	42 x 42 x 35mm	1
5130 054015054	54 x 54 x 15mm	1
5130 054022054	54 x 54 x 22mm	1
5130 054028054	54 x 54 x 28mm	1
5130 054035054	54 x 54 x 35mm	1
5130 054042054	54 x 54 x 42mm	1

*A range means fast moving products.

DC611RE Tee - Reduced End

Copper All Ends



ITEM	SIZE	PACK
5130 022022015	22 x 15 x 22mm	10 A
5130 028028015	28 x 15 x 28mm	10
5130 028028022	28 x 22 x 28mm	10
5130 035035028	35 x 28 x 35mm	1
5130 042042028	42 x 28x 42mm	1

DC611REB Tee - Reduced End & Branch

Copper All Ends



ITEM	SIZE	PACK
5130 015010010	15 x 10 x 10mm	10
5130 022015015	22 x 15 x 15mm	10
5130 028015015	28 x 15 x 15mm	10
5130 028015022	28 x 22 x 15mm	10
5130 028022015	28 x 15 x 22mm	10
5130 028022022	28 x 22 x 22mm	10
5130 035022022	35 x 22 x 22mm	1
5130 035022028	35 x 28 x 22mm	1
5130 035028028	35 x 28 x 28mm	1
5130 042035035	42 x 35 x 35mm	1

*A range means fast moving products.

DC611REE Tee - Reduced Both End

Copper All Ends



ITEM	SIZE	PACK
5130 015022015	15 x 15 x 22mm	10
5130 022028022	22 x 22 x 28mm	10
5130 028035028	28 x 28 x 35mm	1

DC617 End Cap

Copper



ITEM	SIZE	PACK
5301 008000000	8mm	25
5301 010000000	10mm	10
5301 012000000	12mm	10
5301 015000000	15mm	10
5301 018000000	18mm	10
5301 022000000	22mm	10
5301 028000000	28mm	10
5301 035000000	35mm	1
5301 042000000	42mm	1
5301 054000000	54mm	1

*A range means fast moving products.

DC6334

Male Straight Union

Copper x Male Thread (Parallel)



ITEM	SIZE	PACK
DC6334151/2	15 x 1/2"	10
DC6334221	22 x 1"	1
DC6334281	28 x 1"	1

DC633AB

Straight Union Spigot

Copper x Swivel Female Thread



ITEM	SIZE	PACK
4340A022008000	22 x 1"	10

DC633UA

Straight Union Cone

Copper x Swivel Female Thread



ITEM	SIZE	PACK
4340C022008000	22 x 1"	10
4340C028008000	28 x 1"	10

*A range means fast moving products.

DC636

Full Cross Over

Copper x Copper



ITEM	SIZE	PACK
5085 015000000	15mm	10
5085 022000000	22mm	10

DC636A

Part Cross Over

Male Copper x Copper



ITEM	SIZE	PACK
5086 015000000	15mm	10
5086 022000000	22mm	10

DC639

Return Bend

Copper x Copper



ITEM	SIZE	PACK
5060 015000000	15mm	10
5060 022000000	22mm	10

*A range means fast moving products.

DC690MU

Gas Meter Union to BS746

Copper x Swivel Female Thread



ITEM	SIZE	PACK
5240Y022008000	22 x 1"	10
5240Y028008000	28 x 1"	10

DC695MU

Bent Gas Meter Union to BS746

Copper x Swivel Female Thread



ITEM	SIZE	PACK
DC695MU223/4	22 x 3/4"	10

DC703

Female Straight Connector

Copper x Female Thread (Parallel)



ITEM	SIZE	PACK
4270G015004000	15 x 1/2"	10
4270G015006000	15 x 3/4"	10
4270G022006000	22 x 3/4"	10
4270G022008000	22 x 1"	10
4270G028006000	28 x 3/4"	10
4270G028008000	28 x 1"	10
4270G035010000	35 x 1.1/4"	1
4270G042012000	42 x 1.1/2"	1
4270G054016000	54 x 2"	1

DC7032

Female Straight Connector Turned

Male Copper x Female Thread (Parallel)



ITEM	SIZE	PACK
4246G022006000	22 x 3/4"	10

DC704

Male Straight Connector

Copper x Male Thread (Taper)



ITEM	SIZE	PACK
4243G015002000	15 x 1/4"	10
4243G015003000	15 x 3/8"	10
4243G015004000	15 x 1/2"	10
4243G015006000	15 x 3/4"	10
4243G022006000	22 x 3/4"	10
4243G022008000	22 x 1"	10
4243G028006000	28 x 3/4"	10
4243G028008000	28 x 1"	10
4243G035010000	35 x 1.1/4"	10
4243G042012000	42 x 1.1/2"	1
4243G054016000	54 x 2"	1

DC705D Elbow with Air Vent

Copper x Copper



ITEM	SIZE	PACK
4090D022000000	22mm	10

DC7072S Female Wall Plate Elbow (2 Hole)

Copper x Female Thread (Parallel)



ITEM	SIZE	PACK
4472G015004000	15 x 1/2"	10
4472G022006000	22 x 3/4"	10

DC7073 Female Elbow

Copper x Female Thread (Parallel)



ITEM	SIZE	PACK
4090G015004000	15 x 1/2"	10
4090G022006000	22 x 3/4"	10
4090G028008000	28 x 1"	10
4090G035010000	35 x 1.1/4"	5

*A range means fast moving products.

DC7073S Female Wall Plate Elbow (3 Hole)

Copper x Female Thread (Parallel)



ITEM	SIZE	PACK
4471G015004000	15 x 1/2"	10
4471G022006000	22 x 3/4"	10
4092G015004000	15 x 1/2"	10
4092G022006000	22 x 3/4"	10
4092G028008000	28 x 1"	10
4092G035010000	35 x 1.1/4"	1
4092G042012000	42 x 1.1/2"	1
4092G054016000	54 x 2"	1

DC7076S Female Bent Union Connector (Red Brass Tail)

Copper x Female Thread (Parallel)



ITEM	SIZE	PACK
4096G015004000	15 x 1/2"	10
4096G022006000	22 x 3/4"	10
4096G022008000	22 x 1"	10
4096G028008000	28 x 1"	10
4096G035010000	35 x 1.1/4"	1

4560

Manifold For 22Mm Tube With Capillary Outlets 4 Port



ITEM	SIZE	PACK
B--1045604--	8mm	10
C--1045604--	10mm	10

*A range means fast moving products.

DC70764

Male Bent Union Connector (Red Brass Tail with Internal Lugs)
 Copper x Male Thread (Taper)



ITEM	SIZE	PACK
4098G015004000	15 x 1/2"	10
4098G022006000	22 x 3/4"	10
4098G028008000	28 x 1"	10

DC708

Female Wall Plate Connector
 Copper x Female Thread (Parallel)



ITEM	SIZE	PACK
4270A015004000	15 x 1/2"	10

DC711P

Pitcher Tee - Equal
 Copper All Ends



ITEM	SIZE	PACK
4131 022022022	22mm	10
4131 028028028	28mm	10
4130 035035035	35mm	1
4131 042042042	42mm	1
4131 054054054	54mm	1

*A range means fast moving products.

DC712

Tee with Female Branch
 Copper x Female Thread (Parallel)



ITEM	SIZE	PACK
4130G015004015	15 x 15 x 1/2"	10
4130G022004022	22 x 22 x 1/2"	10
4130G022006022	22 x 22 x 3/4"	10
4130G028004028	28 x 28 x 1/2"	10
4130G028006028	28 x 28 x 3/4"	10
4130G028008028	28 x 28 x 1"	10
4130G035004035	35 x 35 x 1/2"	1

DC714

Tee with Female End

Copper x Female Thread (Parallel) x Copper



ITEM	SIZE	PACK
4134G015015004	15 x 1/2 x 15mm	10
4134G022022004	22 x 1/2 x 22mm	10
4134G028028004	28 x 1/2 x 28mm	1

DC716D

Air Vent Plug

Male Fit



ITEM	SIZE	PACK
4290D015000000	15mm	10

*A range means fast moving products.

DC717D

Air Vent End Cap

Copper



ITEM	SIZE	PACK
4301D015000000	15mm	10
4301D022000000	22mm	10

DC733

Union Coupler (Red Brass Tail)

Copper x Copper



ITEM	SIZE	PACK
4340 015000000	15mm	10
4340 022000000	22mm	10
4340 028000000	28mm	10
4340 035000000	35mm	1

DC7333

Female Union Coupler (Red Brass Tail)

Copper x Female Thread (Parallel)



ITEM	SIZE	PACK
4340G015004000	15 x 1/2"	10
4340G022006000	22 x 3/4"	10
4340G028008000	28 x 1"	10
4340G035010000	35 x 1.1/4"	1
4340R042012000	42 x 1.1/2"	1
4340R054016000	54 x 2"	1

DC7334

Male Straight Union Coupler (Red Brass Tail with Internal Lugs) Copper x Male Thread (Taper)



ITEM	SIZE	PACK
4341G015004000	15 x 1/2"	10
4341G022006000	22 x 3/4"	10
4341G022008000	22 x 1"	10
4341G028008000	28 x 1"	10
4341G035010000	35 x 1.1/4"	1
4341R042012000	42 x 1.1/2"	1
4341R054016000	54 x 2"	1

DC750A

Tank Connector

Copper x Male Thread



ITEM	SIZE	PACK
4350 015004000	15 x 1/2"	10
4350 022006000	22 x 3/4"	10
4350 028008000	28 x 1"	10

DC750B

Tank Connector (Long)

Copper x Male Thread (Turned)



ITEM	SIZE	PACK
DC750B151/2	15 x 1/2"	10

*A range means fast moving products.

DC911

Pitcher Tee

Copper All Ends



ITEM	SIZE	PACK
V131 042042042	42mm	1
V131 054035054	54 x 54 x 35mm	1

DC8012

Fitting Reducer

Male Copper x Copper



ITEM	SIZE	PACK
DC80124235	42 x 35mm	1
DC80125435	54 x 35mm	1
DC80125442	54 x 42mm	1

DC80716LH

Bend Cleaning Eye

Copper x Copper



ITEM	SIZE	PACK
DC80716LH42	42mm	1
DC80716LH54	54mm	1

*A range means fast moving products.

DC816

Cleanout Fitting and Plug

Male Copper x Plug



ITEM	SIZE	PACK
DC81635	35mm	1
DC81654	54mm	1

DC816S

Cleanout Fitting and Plug Flush Fitting

Male Copper x Plug



ITEM	SIZE	PACK
DC816S353/4	35 x 3/4"	1
DC816S421	42 x 1"	1
DC816S54112	54 x 1.1/2"	1

DC330N

Cleaning Brush



ITEM	SIZE	PACK
4974 015000000	15mm	1
4974 022000000	22mm	1

*A range means fast moving products.

Delbraze Range



Conex Bänninger Delbraze fittings are available in sizes 66.7-159mm and are suitable for connection copper tubes in accordance with EN1057. Certain configurations are also available for joining 219mm diameter tubes. For sizes below 66.7mm please refer to the section on Delcop End Feed fittings.

Conex Bänninger Delbraze fittings are manufactured from copper or red brass thereby being immune to dezincification. Fittings are designed for brazing applications only and are not suitable to be joined using the soft soldering technique. Our range of accessories includes brazing rods to EN 1044, brazing flux, mats and an extensive range of flanges.

Applications & Technical Information

Drinking water	Y
Sanitary water	Y
Heating and chilled water systems	Y
Compressed air	Y
Gas	Y
Available Sizes	66.7-159mm
Operating Parameters solder 66.7-76mm 15.4 bar	15.4 bar, -20°C to 110°C 13.1 bar @ 150°C 6.9 bar @ 200°C
Operating Parameters solder 108mm 14.2 bar	-20°C to 110°C 12.1 bar @ 150°C 6.4 bar @ 200°C
Operating Parameters solder 133mm 10.6 bar	-20°C to 110°C 7.7 bar @ 150°C 4.1 bar @ 200°C
Operating Parameters brazed 159mm 11.8 bar	-20°C to 110°C 8.6 bar @ 150°C 4.6 bar @ 200°C
Material	Copper and Red Brass

For more details contact our technical team.

DB601 Straight Coupler

Copper x Copper



ITEM	SIZE	PACK
5270 067000000	67mm	1
5270 076000000	76mm	1
5270 108000000	108mm	1
5270 133000000	133mm	1
5270 159000000	159mm	1

DB601M Metric To Imperial Straight Connector

Copper x Copper



ITEM	SIZE	PACK
5009 076024000	76 x 3"	1

DB601R Reduced Coupler

Copper x Copper



ITEM	SIZE	PACK
5240 067028000	67 x 28mm	1
5240 067042000	67 x 42mm	1
5240 067054000	67 x 54mm	1
5240 076028000	76 x 28mm	1
5240 076035000	76 x 35mm	1
5240 076042000	76 x 42mm	1
5240 076054000	76 x 54mm	1
5240 076067000	76 x 67mm	1
5240 108076000	108 x 76mm	1

DB703 Female Straight Connector

Copper x Female Thread



ITEM	SIZE	PACK
4270G067020000	67 x 2.1/2"	1

DB704 Male Straight Connector

Copper x Male Thread



ITEM	SIZE	PACK
4243G067020000	67 x 2.1/2"	1
4243G076024000	76 x 3"	1
4243G108032000	108 x 4"	1

DB6012

Fitting Reducer

Male Copper x Male Copper



ITEM	SIZE	PACK
5243 067028000	67 x 28mm	1
5243 067035000	67 x 35mm	1
5243 067042000	67 x 42mm	1
5243 067054000	67 x 54mm	1
5243 076035000	76 x 35mm	1
5243 076042000	76 x 42mm	1
5243 076054000	76 x 54mm	1
5243 076067000	76 x 67mm	1
5243 108054000	108 x 54mm	1
5243 108067000	108 x 67mm	1
5243 108076000	108 x 76mm	1
5243 133076000	133 x 76mm	1
5243 159076000	159 x 76mm	1
5243 133108000	133 x 108mm	1
5243 159108000	159 x 108mm	1
5243 159133000	159 x 133mm	1

DB607

Elbow

Copper x Copper



ITEM	SIZE	PACK
5090 067000000	67mm	1
5090 076000000	76mm	1
5090 108000000	108mm	1

DB6072LT

Street Bend

Copper x Male Copper



ITEM	SIZE	PACK
5001A067000000	67mm	1
5001A076000000	76mm	1
5001A108000000	108mm	1
5001A159000000	159mm	1

DB607LT

Slow Elbow

Copper x Copper



ITEM	SIZE	PACK
5002A067000000	67mm	1
5002A076000000	76mm	1
5002A108000000	108mm	1
5002A133000000	133mm	1
5002A159000000	159mm	1

DB606

Obtuse Elbow

Copper x Copper



ITEM	SIZE	PACK
5041 067000000	67mm	1
5041 076000000	76mm	1
5041 108000000	108mm	1
5041 133000000	133mm	1
5041 159000000	159mm	1

DB611

Tee - Equal

Copper All Ends



ITEM	SIZE	PACK
5130 067067067	67mm	1
5130 076076076	76mm	1
5130 108108108	108mm	1
5130 133133133	133mm	1
5130 159159159	159mm	1

DB611RB

Tee - Reduced Branch

Copper All Ends



ITEM	SIZE	PACK
5130 067022067	67 x 67 x 22mm	1
5130 067028067	67 x 67 x 28mm	1
5130 067035067	67 x 67 x 35mm	1
5130 067042067	67 x 67 x 42mm	1
5130 067054067	67 x 67 x 54mm	1
5130 076015076	76 x 76 x 15mm	1
5130 076022076	76 x 76 x 22mm	1
5130 076028076	76 x 76 x 28mm	1
5130 076035076	76 x 76 x 35mm	1
5130 076042076	76 x 76 x 42mm	1
5130 076054076	76 x 76 x 54mm	1
5130 076067076	76 x 76 x 67mm	1
5130 108035108	108 x 108 x 35mm	1
5130 108054108	108 x 108 x 54mm	1
5130 108067108	108 x 108 x 67mm	1
5130 108076108	108 x 108 x 76mm	1
5130 133108133	133 x 133 x 108mm	1
5130 159108159	159 x 159 x 108mm	1

DB617

Stop End

Copper



ITEM	SIZE	PACK
5301 067000000	67mm	1
5301 076000000	76mm	1
5301 108000000	108mm	1

>B< ACR



Conex Bänninger >B< ACR is a range of copper and copper alloy End-Feed fittings manufactured in accordance with ANSI B16.22 for imperial air conditioning and refrigeration applications. Available in sizes 1/4" to 4 1/8" tested to B16.22 and in accordance with 97/23/EC to ensure products suitability when used with high and low pressure.

>B< ACR are designed with copper and copper alloy fittings to ensure wall thickness and guarantee impermeability and durability.

Applications & Technical Information

Refrigeration and Air Conditioning Y	Y
Available Sizes	1/4" to 4 1/8"
Operating Parameters	1/4" 79 bar @ 100°C
	3/8" 57 bar @ 100°C
	1/2" 49 bar @ 100°C
	5/8" 44 bar @ 100°C
	3/4" 40 bar @ 100°C
	7/8" 36 bar @ 100°C
	1-1/8" 34 bar @ 100°C
	1-3/8" 31 bar @ 100°C
	1-5/8" 30 bar @ 100°C
	2 1/8" 27 bar @ 100°C
Operating Parameters	2-5/8" 25 bar @ 100°C
	3-1/8" 23 bar @ 100°C
Material	3-5/8" 23 bar @ 100°C
	4- 1/8" 23 bar @ 100°C
Operating Parameters	3/4" 35 bar @ 150°C
	2 1/8" 24 bar @ 150°C
Warranty	25 years

For more details contact our technical team.

96002

Fitting Reducer

Male Copper x Copper



ITEM	SIZE	PACK
9600A003002000	3/8 x 1/4"	25
9600A004002000	1/2 x 1/4"	25
9600A004003000	1/2 x 3/8"	25
9600A005003000	5/8 x 3/8"	25
9600A005004000	5/8 x 1/2"	25
9600A006003000	3/4 x 3/8"	50
9600A006004000	3/4 x 1/2"	50
9600A006005000	3/4 x 5/8"	25
9600A007003000	7/8 x 3/8"	50
9600A007004000	7/8 x 1/2"	25
9600A007005000	7/8 x 5/8"	25
9600A007006000	7/8 x 3/4"	25
9600A009004000	1.1/8 x 1/2"	10
9600A009005000	1.1/8 x 5/8"	10
9600A009006000	1.1/8 x 3/4"	10
9600A009007000	1.1/8 x 7/8"	10
9600A011005000	1.3/8 x 5/8"	25
9600A011007000	1.3/8 x 7/8"	10
9600A011009000	1.3/8 x 1.1/8"	10
9600A013005000	1.5/8 x 5/8"	10
9600A013007000	1.5/8 x 7/8"	10
9600A013009000	1.5/8 x 1.1/8"	10
9600A013011000	1.5/8 x 1.3/8"	10
9600A017005000	2.1/8 x 5/8"	10
9600A017007000	2.1/8 x 7/8"	10
9600A017009000	2.1/8 x 1.1/8"	10
9600A017011000	2.1/8 x 1.3/8"	5
9600A017013000	2.1/8 x 1.5/8"	5
9600A021009000	2.5/8 x 1.1/8"	5
9600A021011000	2.5/8 x 1.3/8"	5

9600A021013000	2.5/8 x 1.5/8"	5
9600A021017000	2.5/8 x 2.1/8"	5
9600A025011000	3.1/8 x 1.3/8"	2
9600A025013000	3.1/8 x 1.5/8"	3
9600A025017000	3.1/8 x 2.1/8"	3
9600A025021000	3.1/8 x 2.5/8"	3
9600A029025000	3.5/8 x 3.1/8"	20
9600A033017000	4.1/8 x 2.1/8"	2
9600A033021000	4.1/8 x 2.5/8"	2
9600A033025000	4.1/8 x 3.1/8"	2
9600A033029000	4.1/8 x 3.5/8"	10

9600

Straight Coupler

Copper x Copper



ITEM	SIZE	PACK
9600 002000000	1/4"	25
9600 003000000	3/8"	100
9600 004000000	1/2"	25
9600 005000000	5/8"	50
9600 006000000	3/4"	10
9600 007000000	7/8"	25
9600 008000000	1"	25
9600 009000000	1.1/8"	10
9600 011000000	1.3/8"	10
9600 013000000	1.5/8"	10
9600 017000000	2.1/8"	5
9600 021000000	2.5/8"	5
9600 025000000	3.1/8"	3
9600 029000000	3.5/8"	22
9600 033000000	4.1/8"	2
9600 316000000	3/16"	10
9600 516000000	5/16"	10

9600R

Reduced Coupler

Male Copper x Copper



ITEM	SIZE	PACK
9600 002316000	1/4 x 3/16"	50
9600 003002000	3/8 x 1/4"	25
9600 003516000	3/8x 5/16"	50
9600 004002000	1/2 x 1/4"	25
9600 004003000	1/2 x 3/8"	25
9600 005002000	5/8 x 1/4"	50
9600 005003000	5/8 x 3/8"	25
9600 005004000	5/8 x 1/2"	25
9600 006003000	3/4 x 3/8"	50
9600 006004000	3/4 x 1/2"	50
9600 006005000	3/4 x 5/8"	25
9600 007003000	7/8 x 3/8"	50
9600 007004000	7/8 x 1/2"	10
9600 007005000	7/8 x 5/8"	50
9600 007006000	7/8 x 3/4"	50
9600 009004000	1.1/8 x 1/2"	25
9600 009005000	1.1/8 x 5/8"	10
9600 009006000	1.1/8 x 3/4"	10
9600 009007000	1.1/8 x 7/8"	10
9600 011005000	1.3/8 x 5/8"	25
9600 011006000	1.3/ x 3/4"	25
9600 011007000	1.3/8 x 7/8"	25
9600 011009000	1.3/8 x 1.1/8"	10
9600 013005000	1.5/8 x 5/8"	10
9600 013007000	1.5/8 x 7/8"	10
9600 013009000	1.5/8 x 1.1/8"	10
9600 013011000	1.5/8 x 1.3/8"	10
9600 017005000	2.1/8 x 5/8"	10
9600 017007000	2.1/8 x 7/8"	10

9600 017009000	2.1/8 x 1.1/8"	10
9600 017011000	2.1/8 x 1.3/8"	5
9600 017013000	2.1/8 x 1.5/8"	5
9600 021009000	2.5/8 x 1.1/8"	5
9600 021011000	2.5/8 x 1.3/8"	1
9600 021013000	2.5/8 x 1.5/8"	5
9600 021017000	2.5/8 x 2.1/8"	5
9600 025013000	3.1/8 x 1.5/8"	3
9600 025017000	3.1/8 x 2.1/8"	3
9600 025021000	3.1/8 x 2.5/8"	3
9600 029025000	3.5/8 x 3.1/8"	1
9600 033021000	4.1/8 x 2.5/8"	2
9600 033025000	4.1/8 x 3.1/8"	2
9600 033029000	4.1/8 x 3.5/8"	16
9600 516002000	5/16 x 1/4"	50

9601

Slip Coupler

Copper x Copper



ITEM	SIZE	PACK
9601 005000000	5/8"	25
9601 009000000	1.1/8"	25
9601 013000000	1.5/8"	10
9601 017000000	2.1/8"	5
9601 021000000	2.5/8"	5
9601 025000000	3.1/8"	3

9603

Female Straight Connector

Male Copper x Female Thread



ITEM	SIZE	PACK
9603 004004000	1/2 x 1/2"	50
9603 004003000	1/2 x 3/8"	50
9603 005004000	5/8 x 1/2"	50
9603 007006000	7/8 x 3/4"	25
9603 009008000	1.1/8 x 1"	10

9604R

Male Straight Connector Reduced

Copper x Male Thread



ITEM	SIZE	PACK
9604 004003000	1/2 x 3/8"	50
9604 005004000	5/8 x 1/2"	50
9604 007006000	7/8 x 3/4"	25
9604 009008000	1.1/8 x 1"	25
9604 011010000	1.3/8 x 1.1/4"	10
9604 017016000	2.1/8 x 2"	5

9604-2

Male Straight Connector

Male Copper x Male Thread



ITEM	SIZE	PACK
9604 004004000	1/2 x 1/2"	50
9604 005006000	5/8 x 3/4"	25

9604

Male Straight Connector

Copper x Male Thread



ITEM	SIZE	PACK
9604 006006000	3/4 x 3/4"	25
9604 007008000	7/8 x 1"	25
9604 013010000	1.5/8 x 1.1/4"	10

9606

Obtuse Elbow

Copper x Copper



ITEM	SIZE	PACK
9606 002000000	1/4"	25
9606 003000000	3/8"	25
9606 004000000	1/2"	25
9606 005000000	5/8"	10
9606 006000000	3/4"	25
9606 007000000	7/8"	25
9606 008000000	1"	10
9606 009000000	1.1/8"	10
9606 011000000	1.3/8"	10
9606 013000000	1.5/8"	10
9606 017000000	2.1/8"	5
9606 021000000	2.5/8"	2
9606 025000000	3.1/8"	1
9606 033000000	4.1/8"	1

9606-2

Street Obtuse Elbow

Male Copper x Copper



ITEM	SIZE	PACK
9606A003000000	3/8"	50
9606A004000000	1/2"	50
9606A005000000	5/8"	100
9606A006000000	3/4"	50
9606A007000000	7/8"	25
9606A009000000	1.1/8"	10
9606A011000000	1.3/8"	10

9607

90° Elbow

Copper x Copper



ITEM	SIZE	PACK
9607 003000000	3/8"	25
9607 002000000	1/4"	50
9607 004000000	1/2"	25
9607 005000000	5/8"	50
9607 006000000	3/4"	10
9607 007000000	7/8"	10
9607 008000000	1"	10
9607 009000000	1.1/8"	10
9607 011000000	1.3/8"	10
9607 013000000	1.5/8"	10
9607 017000000	2.1/8"	10
9607 021000000	2.5/8"	2
9607 025000000	3.1/8"	1
9607 029000000	3.5/8"	1
9607 033000000	4.1/8"	1

9607R

Reduced Elbow

Copper x Copper



ITEM	SIZE	PACK
9607 005004000	5/8 x 1/2"	100

9607-2

Street Elbow

Male Copper x Copper



ITEM	SIZE	PACK
9607A003000000	3/8"	50
9607A004000000	1/2"	25
9607A005000000	5/8"	50
9607A007000000	7/8"	25
9607A009000000	1.1/8"	10
9607A011000000	1.3/8"	10
9607A013000000	1.5/8"	5
9607A017000000	2.1/8"	5
9607A021000000	2.5/8"	2

9607-2I

Street Intermediate Elbow

Male Copper x Copper



ITEM	SIZE	PACK
9607J005000000	5/8"	50
9607J007000000	7/8"	25

9607-I

Intermediate Elbow

Copper x Copper



ITEM	SIZE	PACK
9607I0060000000	3/4"	50
9607I0090000000	1.1/8"	25

9607LT

Slow Bend

Copper x Copper



ITEM	SIZE	PACK
9607D002000000	1/4"	25
9607D003000000	3/8"	25
9607D004000000	1/2"	25
9607D005000000	5/8"	25
9607D006000000	3/4"	25
9607D008000000	1"	10
9607D009000000	1.1/8"	10
9607D011000000	1.3/8"	5
9607D013000000	1.5/8"	5
9607D025000000	3.1/8"	1
9607D007000000	7/8"	10

9607LTR

Reduced Slow Bend

Copper x Copper



ITEM	SIZE	PACK
9607D006005000	3/4 x 5/8"	50
9607D007006000	7/8 x 3/4"	25
9607D009007000	1.1/8 x 7/8"	10

9611

Tee

Copper All Ends



ITEM	SIZE	PACK
9611 002002002	1/4"	25
9611 003003003	3/8"	50
9611 004004004	1/2"	25
9611 005005005	5/8"	25
9611 006006006	3/4"	25
9611 007007007	7/8"	10
9611 008008008	1"	10
9611 009009009	1.1/8"	10
9611 011011011	1.3/8"	5
9611 013013013	1.5/8"	5
9611 017017017	2.1/8"	5
9611 021021021	2.5/8"	1
9611 025025025	3.1/8"	1
9611 029029029	3.5/8"	1
9611 033033033	4.1/8"	1
9611 516516516	5/16"	50

9611RB

Tee - Reduced Branch

Copper All Ends



ITEM	SIZE	PACK
9611 005005006	5/8 x 5/8 x 3/4"	25
9611 002002003	1/4 x 1/4 x 3/8"	50
9611 003003002	3/8 x 3/8 x 1/4"	25
9611 003003004	3/8 x 3/8 x 1/2"	50
9611 003003005	3/8 x 3/8 x 5/8"	50
9611 003003316	3/8 x 3/8 x 3/16"	50
9611 004004002	1/2 x 1/2 x 1/4"	50
9611 004004003	1/2 x 1/2 x 3/8"	50
9611 004004005	1/2 x 1/2 x 5/8"	50
9611 005005002	5/8 x 5/8 x 1/4"	50
9611 005005003	5/8 x 5/8 x 3/8"	50
9611 005005004	5/8 x 5/8 x 1/2"	50
9611 005005007	5/8 x 5/8 x 7/8"	25
9611 005005009	5/8 x 5/8 x 1.1/8"	10
9611 006006003	3/4 x 3/4 x 3/8"	10
9611 006006004	3/4 x 3/4 x 1/2"	10
9611 006006005	3/4 x 3/4 x 5/8"	10
9611 006006007	3/4 x 3/4 x 7/8"	10
9611 007007002	7/8 x 7/8 x 1/4"	25
9611 007007003	7/8 x 7/8 x 3/8"	25
9611 007007004	7/8 x 7/8 x 1/2"	25
9611 007007005	7/8 x 7/8 x 5/8"	25
9611 007007006	7/8 x 7/8 x 3/4"	10
9611 007007009	7/8 x 7/8 x 1.1/8"	10
9611 009009003	1.1/8 x 1.1/8 x 3/8"	10
9611 009009004	1.1/8 x 1.1/8 x 1/2"	10
9611 009009005	1.1/8 x 1.1/8 x 5/8"	10

Continued overleaf

9611 009009006	1.1/8 x 1.1/8 x 3/4"	10
9611 009009007	1.1/8 x 1.1/8 x 7/8"	10
9611 009009011	1/8 x 1.1/8 x 1.3/8"	5
9611 009009013	1/8 x 1.1/8 x 1.5/8"	5
9611 011011004	1.3/8 x 1.3/8 x 1/2"	5
9611 011011005	1.3/8 x 1.3/8 x 5/8"	5
9611 011011007	1.3/8 x 1.3/8 x 7/8"	5
9611 011011009	1.3/8 x 1.3/8 x 1.1/8"	5
9611 011011013	1.3/8 x 1.3/8 x 1.5/8"	5
9611 011011017	1.3/8 x 1.3/8 x 2.1/8"	1
9611 013013005	1.5/8 x 1.5/8 x 5/8"	5
9611 013013007	1.5/8 x 1.5/8 x 7/8"	5
9611 013013017	1.5/8 x 1.5/8 x 2.1/8"	2
9611 017017005	2.1/8 x 2.1/8 x 5/8"	5
9611 017017007	2.1/8 x 2.1/8 x 7/8"	5
9611 017017009	2.1/8 x 2.1/8 x 1.1/8"	4
9611 017017011	2.1/8 x 2.1/8 x 1.3/8"	5
9611 017017013	2.1/8 x 2.1/8 x 1.5/8"	4
9611 017017021	2.1/8 x 2.1/8 x 2.5/8"	2
9611 021021005	2.5/8 x 2.5/8 x 5/8"	3
9611 021021007	2.5/8x2.5/8 x 7/8"	3
9611 021021009	5/8 x 2.5/8 x 1.1/8"	3
9611 021021011	5/8 x 2.5/8 x 1.3/8"	3
9611 021021013	5/8 x 2.5/8 x 1.5/8"	3
9611 021021017	5/8 x 2.5/8 x 2.1/8"	2
9611 025025013	3.1/8 x 3.1/8 x 1.5/8"	1
9611 025025017	3.1/8 x 3.1/8 x 2.1/8"	1
9611 025025021	3.1/8 x 3.1/8 x 2.5/8"	8
9611 033033017	1/8 x 4.1/8 x 2.1/8"	1
9611 033033021	1/8 x 4.1/8 x 2.5/8"	1
9611 033033025	1/8 x 4.1/8 x 3.1/8"	1
9611 516516002	5/16 x 5/16 x 1/4"	50

9611RE

Tee - Reduced End

Copper All Ends



ITEM	SIZE	PACK
9611 003002003	3/8 x 1/4 x 3/8"	50
9611 003516003	3/8 x 5/16 x 3/8"	50
9611 004002004	1/2 x 1/4 x 1/2"	50
9611 004003004	1/2 x 3/8 x 1/2"	50
9611 005003005	5/8 x 3/8 x 5/8"	50
9611 005004005	5/8 x 1/2 x 5/8"	50
9611 006004006	3/4 x 1/2 x 3/4"	10
9611 006005006	3/4 x 5/8 x 3/4"	10
9611 013013009	5/8 x 1.5/8 x 1.1/8"	5
9611 013013011	5/8 x 1.5/8 x 1.3/8"	5
9611 007004007	7/8 x 1/2 x 7/8"	25
9611 007005007	7/8 x 5/8 x 7/8"	25
9611 007006007	7/8 x 3/4 x 7/8"	10
9611 009005009	1.1/8 x 5/8 x 1.1/8"	10
9611 009007009	1.1/8 x 7/8 x 1.1/8"	10
9611 011005011	1.3/8 x 5/8 x 1.3/8"	5
9611 011007007	1.3/8 x 7/8 x 7/8"	5
9611 011007011	1.3/8 x 7/8 x 1.3/8"	5
9611 011009011	1.3/8 x 1.1/8 x 1.3/8"	5
9611 013007013	1.5/8 x 7/8 x 1.5/8"	5
9611 013009013	1.5/8 x 1.1/8 x 1.5/8"	5
9611 013011013	1.5/8 x 1.3/8 x 1.5/8"	1
9611 017011017	2.1/8 x 1.3/8 x 2.1/8"	2
9611 017013017	2.1/8 x 1.5/8 x 2.1/8"	2

9611REB

Tee - Reduced End & Branch

Copper All Ends



ITEM	SIZE	PACK
9611 004003002	1/2 x 3/8 x 1/4"	25
9611 004003003	1/2 x 3/8 x 3/8"	50
9611 011009005	1.3/8 x 1.1/8 x 5/8"	5
9611 011009007	1.3/8 x 1.1/8 x 7/8"	5
9611 011009009	1.3/8 x 1.1/8 x 1.1/8"	5
9611 011007009	1.3/8 x 7/8 x 1.1/8"	5
9611 009007005	1.1/8 x 7/8 x 5/8"	10
9611 009005007	1.1/8 x 5/8 x 7/8"	10
9611 009005005	1.1/8 x 5/8 x 5/8"	10
9611 009007007	1.1/8 x 7/8 x 7/8"	10
9611 013011007	1.5/8 x 1.3/8 x 7/8"	5
9611 013011009	1.5/8 x 1.3/8 x 1.1/8"	5
9611 013011011	1.5/8 x 1.3/8 x 1.3/8"	5
9611 013009007	1.5/8 x 1.1/8 x 7/8"	5
9611 013009009	1.5/8 x 1.1/8 x 1.1/8"	5
9611 013009011	1.5/8 x 1.1/8 x 1.3/8"	5
9611 017011009	2.1/8 x 1.3/8 x 1.1/8"	25
9611 017011011	2.1/8 x 1.3/8 x 1.3/8"	3
9611 017011013	2.1/8 x 1.3/8 x 1.5/8"	25
9611 017013009	2.1/8 x 1.5/8 x 1.1/8"	4
9611 017013011	2.1/8 x 1.5/8 x 1.3/8"	20
9611 017013013	2.1/8 x 1.5/8 x 1.5/8"	4
9611 006005005	3/4 x 5/8 x 5/8"	10
9611 006004004	3/4 x 1/2 x 1/2"	10
9611 003002002	3/8 x 1/4 x 1/4"	50
9611 005004003	5/8 x 1/2 x 3/8"	50
9611 005004004	5/8 x 1/2 x 1/2"	50
9611 005003004	5/8 x 3/8 x 1/2"	50
9611 021017013	5/8 x 2.1/8 x 1.5/8"	2

9617

Stop End

Copper



ITEM	SIZE	PACK
9617 002000000	1/4"	50
9617 003000000	3/8"	50
9617 004000000	1/2"	50
9617 005000000	5/8"	25
9617 006000000	3/4"	50
9617 007000000	7/8"	50
9617 009000000	1.1/8"	50
9617 011000000	1.3/8"	25
9617 013000000	1.5/8"	25
9617 017000000	2.1/8"	10
9617 021000000	2.5/8"	5
9617 025000000	3.1/8"	5
9617 033000000	4.1/8"	2

9618

Reduced Bush

Copper x Copper



ITEM	SIZE	PACK
9618 006005000	3/4 x 5/8"	50

9624 Tube Strap

Copper



ITEM	SIZE	PACK
9624 002000000	1/4"	50
9624 004000000	1/2"	100
9624 007000000	7/8"	100
9624 009000000	1.1/8"	100
9624 011000000	1.3/8"	50
9624 013000000	1.5/8"	50
9624 017000000	2.1/8"	50

9638

Return Bend

Copper x Copper



ITEM	SIZE	PACK
9638 002000000	1/4"	50
9638 003000000	3/8"	25
9638 004000000	1/2"	50
9638 005000000	5/8"	25
9638 006000000	3/4"	10
9638 007000000	7/8"	10
9638 009000000	1.1/8"	5
9638 011000000	1.3/8"	25
9638 013000000	1.5/8"	25
9638 017000000	2.1/8"	15

9698

P-Trap

Copper x Copper



ITEM	SIZE	PACK
9698 005000000	5/8"	5
9698 006000000	3/4"	5
9698 007000000	7/8"	2
9698 009000000	1.1/8"	2
9698 011000000	1.3/8"	2
9698 017000000	1/2"	1

9611REB

Tee - Reduced End & Branch

Copper All Ends



ITEM	SIZE	PACK
9611 021017017	5/8 x 2.1/8 x 2.1/8"	2
9611 007005004	7/8 x 5/8 x 1/2"	25
9611 007005005	7/8 x 5/8 x 5/8"	25
9611 007006006	7/8 x 3/4 x 3/4"	10
9611 007004004	7/8 x 1/2 x 1/2"	10

Medical Gas



Conex Bänninger Medical Gas Copper fittings are scientifically proven to assist in killing pathogenic microbes in the medical, pharmaceutical, Medical Gas, food preparation and other health sensitive areas. Available in sizes 6-159mm and degreased in accordance to BOC/Medaes 3000000 specification of less than 100mg/m2 oil contamination and complies to the HTM 02-01 medical gas pipeline regulations.

Designed and manufactured with copper and copper alloy fittings. Bespoke and fabrications options can be cleaned to same specification available.

Conex Bänninger Medical Gas copper fitting has been manufactured and Quality Assured in accordance with EN1254-1. Independently tested and certified for cleanliness suitable for use in Medical Gases and Oxygen applications.

Applications & Technical Information

Medical Gas and Oxygen	Y
Available Sizes	6 - 159mm
Operating Parameters	
Warranty	25 years
Material	Copper + Red Brass

For more details contact our technical team.

MG 600

Slip Coupling

Copper x Copper



ITEM	SIZE	PACK
MG5270S0120000	12mm	1
MG5270S0150000	15mm	1
MG5270S0220000	22mm	1

MG 601

Straight Coupler

Copper x Copper



ITEM	SIZE	PACK
MG5270 0080000	8mm	1
MG5270 0100000	10mm	1
MG5270 0120000	12mm	1
MG5270 0150000	15mm	1
MG5270 0220000	22mm	1
MG5270 0280000	28mm	1
MG5270 0350000	35mm	1
MG5270 0420000	42mm	1
MG5270 0540000	54mm	1
MG5270 0670000	67mm	1
MG5270 0760000	76mm	1
MG5270 1080000	108mm	1
MG5270 1330000	133mm	1
MG5270 1590000	159mm	1

MG 601-2

Fitting Reducer

Male Copper x Copper



ITEM	SIZE	PACK
MG5243 0100800	10 x 8mm	1
MG5243 0120800	12 x 8mm	1
MG5243 0121000	12 x 10mm	1
MG5243 0150800	15 x 8mm	1
MG5243 0151000	15 x 10mm	1
MG5243 0151200	15 x 12mm	1
MG5243 0221200	22 x 12mm	1
MG5243 0221500	22 x 15 mm	1
MG5243 0281500	28 x 15 mm	1
MG5243 0282200	28 x 22mm	1
MG5243 0352800	35 x 28mm	1
MG5243 0422800	42 x 28mm	1
MG5243 0423500	42 x 35mm	1
MG5243 0542800	54 x 28mm	1
MG5243 0543500	54 x 35mm	1
MG5243 0544200	54 x 42mm	1
MG5243 0763500	76 x 35mm	1
MG5243 0764200	76 x 42mm	1
MG5243 0765400	76 x 54mm	1
MG5243 0766700	76 x 67mm	1
MG5243 1085400	108 x 54mm	1
MG5243 1087600	108 x 76mm	1
MG5243 1591080	159 x 108mm	1

MG 601-R

Reduced Coupler

Copper x Copper



ITEM	SIZE	PACK
MG5240 0120800	12 x 8mm	1
MG5240 0121000	12 x 10mm	1
MG5240 0151000	15 x 10mm	1
MG5240 0151200	15 x 12mm	1
MG5240 0221200	22 x 12mm	1
MG5240 0221500	22 x 15mm	1
MG5240 0281500	28 x 15mm	1
MG5240 0282200	28 x 22mm	1
MG5240 0422800	42 x 28mm	1
MG5240 0423500	42 x 35mm	1
MG5240 0763500	76 x 35mm	1
MG5240 0764200	76 x 42mm	1
MG5240 0765400	76 x 54 mm	1
MG5240 1085400	108 x 54mm	1
MG5240 1087600	108 x 76mm	1
MG5240 1591080	159 x 108mm	1

MG 606

45° Elbow

Copper x Copper



ITEM	SIZE	PACK
MG5040 0120000	12mm	1
MG5040 0150000	15mm	1
MG5041 0120000	12mm	1
MG5041 0150000	15mm	1
MG5041 0220000	22mm	1
MG5041 0280000	28mm	1
MG5041 0350000	35mm	1
MG5041 0420000	42mm	1
MG5041 0540000	54mm	1
MG5041 0670000	67mm	1
MG5041 0760000	76mm	1
MG5041 1080000	108mm	1
MG5041 1590000	159mm	1

MG 607

90° Bend

Copper x Copper



ITEM	SIZE	PACK
MG5002A0150000	15mm	1
MG5002A0220000	22mm	1
MG5002A0280000	28mm	1
MG5002A0350000	35mm	1
MG5002A0420000	42mm	1
MG5002A0540000	54mm	1
MG5002A0760000	76mm	1
MG5002A1080000	108mm	1
MG5002A1330000	133mm	1
MG5002A1590000	159mm	1

MG 607-2

Elbow

Male Copper x Copper



ITEM	SIZE	PACK
MG5090 0080000	8mm	1
MG5090 0100000	10mm	1
MG5090 0120000	12mm	1
MG5090 0150000	15mm	1
MG5090 0220000	22mm	1
MG5090 0221500	22 x 15mm	1
MG5090 0280000	28mm	1
MG5090 0350000	35mm	1
MG5090 0420000	42mm	1
MG5090 0540000	54mm	1

MG 607-2

90° Elbow

Copper x Copper



ITEM	SIZE	PACK
MG5090 0670000	67mm	1
MG5090 0760000	76mm	1

MG 607-2

Street Elbow

Male copper x Copper



ITEM	SIZE	PACK
MG5092 0120000	12mm	1
MG5092 0150000	15mm	1
MG5092 0220000	22mm	1
MG5092 0280000	28mm	1
MG5092 0420000	42mm	1

MG 611

Equal Tee

Copper All Ends



ITEM	SIZE	PACK
MG5130 0080808	8mm	1
MG5130 0121212	12mm	1
MG5130 0151515	15mm	1
MG5130 0222222	22mm	1
MG5130 0282828	28mm	1
MG5130 0353535	35mm	1
MG5130 0424242	42mm	1
MG5130 0545454	54mm	1
MG5130 0767676	76mm	1
MG5R 108108108	108mm	1
MG5R 159159159	159mm	1

MG 611 RB Tee Reduced Branch

Copper All Ends

ITEM	SIZE	PACK
MG5130 0352235	35 x 35 x 22mm	1
MG5130 0542854	54 x 54 x 28mm	1
MG5130 0543554	54 x 54 x 35mm	1
MG5130 0544254	54 x 54 x 42mm	1
MG5130 0151215	15 x 15 x 12mm	1
MG5130 0152215	15 x 15 x 22mm	1
MG5130 0221222	22 x 22 x 12mm	1
MG5130 0221522	22 x 22 x 15mm	1
MG5130 0281528	28 x 28 x 15mm	1
MG5130 0282228	28 x 28 x 22mm	1
MG5130 0421542	42 x 42 x 15mm	1
MG5130 0422242	42 x 42 x 22mm	1
MG5130 0422842	42 x 42 x 28mm	1
MG5130 0423542	42 x 42 x 35mm	1
MG5130 0762876	76 x 76 x 28mm	1
MG5130 0151212	15 x 12 x 12mm	1
MG5130 0221515	22 x 15 x 15mm	1
MG5130 0281522	28 x 22 x 15mm	1
MG5130 0282222	28 x 22 x 22mm	1
MG5R 108028108	108 x 108 x 28mm	1
MG5R 108042108	108 x 108 x 42mm	1
MG5R 159015159	159 x 159 x 15mm	1
MG5R 159054159	159 x 159 x 54mm	1
MG5R 159108159	159 x 159 x 108mm	1



MG 611 RE Tee Reduced End

Copper All Ends

ITEM	SIZE	PACK
MG5130 0282822	28 x 22 x 28mm	1
MG5130 0151512	15 x 12 x 15mm	1
MG5130 0222215	22 x 15 x 22mm	1



MG 617 Stop End Cap

Copper

ITEM	SIZE	PACK
MG5301 0120000	12mm	1
MG5301 0150000	15mm	1
MG5301 0220000	225mm	1
MG5301 0280000	28mm	1
MG5301 0350000	35mm	1
MG5301 0420000	42mm	1
MG5301 0540000	54mm	1



MG 704 Straight Adaptor

Male Thread

ITEM	SIZE	PACK
MG4243G0280800	28 x 1mm	1



K65 Range



K65 is a brazing fitting system for high-pressure applications, mainly refrigeration. CO₂ system works at high operating pressure up to 120bar at temperatures to 150°C. Available in sizes 3/8" to 1.5/8" in high-pressure applications.

K65 is tested to 4x maximum working pressure (480 bar). Manufactured with copper alloy body in accordance with EN12375. Certified by TÜV Rheinland Group.

For use with silver hard brazing rods (minimum 2% silver)

Applications & Technical Information

High pressure	Y
Available Sizes	5/8", 3/4", 7/8", 1 1/8", 1 3/8", 1 5/8"
Warranty	10 Years
Operating Parameters	150°C
Material	Copper and copper alloy

For more details contact our technical team.

K5001

90° Street Bend

Male Copper x Copper



ITEM	SIZE	PACK
K5001003000000	3/8"	5
K5001004000000	1/2"	5
K5001005000000	5/8"	5
K5001006000000	3/4"	5
K5001007000000	7/8"	5
K5001009000000	1.1/8"	5
K5001011000000	1.3/8"	5
K5001013000000	1.5/8"	5

K5002

90° Bend

Copper x Copper



ITEM	SIZE	PACK
K5002003000000	3/8"	5
K5002004000000	1/2"	5
K5002005000000	5/8"	5
K5002006000000	3/4"	5
K5002007000000	7/8"	5
K5002009000000	1.1/8"	5
K5002011000000	1.3/8"	5
K5002013000000	1.5/8"	5

K5041

45° Street Bend

Male Copper X Copper



ITEM	SIZE	PACK
K5041006000000	3/4"	5
K5041007000000	7/8"	5
K5041009000000	1.1/8"	5
K5041011000000	1.3/8"	5
K5041013000000	1.5/8"	5

K5130

Equal Tee

Copper all ends



ITEM	SIZE	PACK
K5130003003003	3/8" x 3/8" x 3/8"	5
K5130004004003	1/2" x 1/2" x 3/8"	5
K5130004004004	1/2" x 1/2" x 1/2"	5
K5130005005004	5/8" x 5/8" x 1/2"	5
K5130005005005	5/8" x 5/8" x 5/8"	5
K5130006006005	3/4" x 3/4" x 5/8"	5
K5130006006006	3/4" x 3/4" x 3/4"	5
K5130007007006	7/8" x 7/8" x 3/4"	5
K5130007007007	7/8" x 7/8" x 7/8"	5
K5130009009007	1 1/8" x 1 1/8" x 7/8"	5
K5130009009009	1 1/8" x 1 1/8" x 1 1/8"	5
K5130011011007	1 3/8" x 1 3/8" x 7/8"	5
K5130011011011	1 3/8" x 1 3/8" x 1 3/8"	5
K5130013013013	1 5/8" x 1 5/8" x 1 5/8"	5
K5130004003003	1/2" x 3/8" x 3/8"	5
K5130005004004	5/8" x 1/2" x 1/2"	5
K5130005005003	5/8" x 5/8" x 3/8"	5
K5130009007004	1.1/8" x 7/8" x 1/2"	5

K5243 Reducing Nipple

Copper X Copper



ITEM	SIZE	PACK
K5243004003000	1/2" x 3/8"	5
K5243004012000	1/2" x 12 mm	5
K5243005003000	5/8" x 3/8"	5
K5243005004000	5/8" x 1/2"	5
K5243005015000	5/8" x 15 mm	5
K5243006004000	3/4" x 1/2"	5
K5243006005000	3/4" x 5/8"	5
K5243006018000	3/4" x 18 mm	5
K5243007003000	7/8" x 3/8"	5
K5243007006000	7/8" x 3/4"	5
K5243007022000	7/8" x 22 mm	5
K5243009005000	1.1/8" x 5/8"	5
K5243009006000	1.1/8" x 3/4"	5
K5243009007000	1.1/8" x 7/8"	5
K5243009028000	1.1/8" x 28 mm	5
K5243011009000	1.3/8" x 1.1/8"	5
K5243011035000	1.3/8" x 35 mm	5
K5243013011000	1.5/8" x 1.3/8"	5
K5243013042000	1.5/8" x 42 mm	5
K5243006003000	3/4" x 3/8"	5
K5243007005000	7/8" x 5/8"	5

K5270 Coupling

Copper X Copper



ITEM	SIZE	PACK
K5270003000000	3/8"	5
K5270004000000	1/2"	5
K5270005000000	5/8"	5
K5270006000000	3/4"	5
K5270007000000	7/8"	5
K5270009000000	1.1/8"	5
K5270011000000	1.3/8"	5
K5270013000000	1.5/8"	5

K5301 End Cap

Copper



ITEM	SIZE	PACK
K5301003000000	3/8"	5
K5301004000000	1/2"	5
K5301005000000	5/8"	5
K5301006000000	3/4"	5
K5301007000000	7/8"	5
K5301009000000	1.1/8"	5
K5301011000000	1.3/8"	5
K5301013000000	1.5/8"	5

Triflow Solder Ring Range



Triflow Solder Ring Range



Triflow Solder Ring fittings contain lead-free solder complying with EN 29453 and ISO 9453. When heat is applied, the sufficient layer of lead-free solder fills the gap between the tube and fitting by capillary action to form a mechanically strong, leak-proof joint without the need for external solder application.

Triflow Solder Ring fittings are manufactured in accordance with EN 1254-1 and 4. They are available in sizes 6-66.7mm and are suitable for connecting copper tubes in accordance with EN 1057. Imperial copper tube to BS 659 in sizes 3/8", 2" and 2.1/2" can be readily joined using 12mm, 15mm, 54mm and 66.7mm fittings respectively.

To counteract the dezincification problem, Triflow Solder Ring fittings are manufactured from high-grade copper, red brass or dezincification resistant (DZR) brass.

Applications & Technical Information

Drinking water	Y
Sanitary water	Y
Heating and chilled water systems	Y
Compressed air	Y
LPG and Natural Gas	Y
Available Sizes	6 - 67mm
Operating Parameters 6-54mm	16 bar @30°C 10 bar @ 65°C 7 bar @ 95°C 6 bar @ 110°C
Warranty	25 years
Material	Copper, DZR, Red Brass

For more details contact our technical team.

SOLDER RING ASSEMBLY INSTRUCTIONS:**Tools required:**

Tube cutter, deburring tool, abrasive cloth, flux and blow lamp.

Assembly

- Ensure the copper tube and fitting sizes are compatible. Cut the tube end square, and ensure it retains its shape.
- Deburr the tube, both inside and outside.
- Clean tube with an abrasive cloth, and fitting socket with a wire brush.
- Apply a thin layer of flux to the tube, and to the fitting socket.
- Insert the tube into the fitting until the tube stop is reached. Rotate the tube or fitting and remove excess flux where possible.
- Light the blow lamp, and heat the fitting socket until the flux starts to boil. Keep the flame moving over the fitting until a ring of solder appears at the mouth of the socket. Do not provide excessive heat or additional solder.
- Remove the blow lamp, allow to cool and wipe the joint(s) with a damp cloth to remove flux residues.
- Flush all residues out of the system.

**Demounting**

- This fitting system is not demountable.

TP1

Straight Coupler

Copper x Copper



ITEM	SIZE	PACK
TP0108	8 x 8mm	25
TP0110	10 x 10mm	25
TP0112	12 x 12mm	25
TP0115	15 x 15mm	25 A
TP0122	22 x 22mm	25 A
TP0128	28 x 28mm	10
TP0135	35 x 35mm	10
TP0142	42 x 42mm	5
TP0154	54 x 54mm	2
TP0167	67 x 67mm	1

TP1IM

Metric to Imperial Connector

Copper (Metric) x Copper (Imperial)



ITEM	SIZE	PACK
TP01IM151/2	15 x 1/2"	25
TP01IM223/4	22 x 3/4"	25
TP01IM281/0	28 x 1"	10
TP01IM3511/4	35 x 1.1/4"	5
TP01IM4211/2	42 x 1.1/2"	5

*A range means fast moving products.

TP1R

Reduced Coupler

Copper x Copper



ITEM	SIZE	PACK
TP01R1008	10 x 8mm	10
TP01R1508	15 x 8mm	10
TP01R1510	15 x 10mm	10
TP01R1512	15 x 12mm	25
TP01R2210	22 x 10mm	10
TP01R2215	22 x 15mm	25
TP01R2815	28 x 15mm	10
TP01R2822	28 x 22mm	10
TP01R3522	35 x 22mm	10
TP01R3528	35 x 28mm	10
TP01R4235	42 x 35mm	5
TP01R5442	54 x 42mm	2

*A range means fast moving products.

TP1S

Slip Coupler

Copper x Copper



ITEM	SIZE	PACK
TP01S15	15mm	25
TP01S22	22mm	25
TP01S28	28mm	10

TP2

Female Straight Connector

Female Thread (Parallel)



ITEM	SIZE	PACK
TP02151/2	15 x 1/2"	25
TP02153/8	15 x 3/8"	10
TP02221/2	22 x 1/2"	5
TP02223/4	22 x 3/4"	10
TP02281/0	28 x 1"	10
TP023511/4	35 x 1.1/4"	5
TP024211/2	42 x 1.1/2"	5
TP02542/0	54 x 2"	2

TP2LC

Reduced Female Connector

Female Thread (Parallel)



ITEM	SIZE	PACK
TP02151/4	15 x 1/4"	25

*A range means fast moving products.

TP2W

Female Wall Plate Connector

Female Thread (Parallel)



ITEM	SIZE	PACK
TP02W151/2	15 x 1/2"	10

TP3

Straight Male Connector

Copper x Male Thread (Parallel)



ITEM	SIZE	PACK
TP03081/4	8 x 1/4"	10
TP03151/2	15 x 1/2"	25
TP03221/2	22 x 1/2"	10
TP03223/4	22 x 3/4"	10
TP03281/0	28 x 1"	10
TP033511/4	35 x 1.1/4"	5
TP034211/2	42 x 1.1/2"	5
TP03542/0	54 x 2"	1

*A range means fast moving products.

TP3LC

Straight Male Connector

Copper x Male Thread (Parallel)



ITEM	SIZE	PACK
TP03151/4	15 x 1/4"	25
TP03153/8	15 x 3/8"	10

TP5

Tank Connector

Copper x Female Thread



ITEM	SIZE	PACK
TP05151/2	15 x 1/2"	25
TP05223/4	22 x 3/4"	10
TP05281/0	28 x 1"	5
TP05351 1/4	35 x 1.1/4"	1
TP05421 1/2	42 x 1.1/2"	1
TP05542/0	54 x 2"	1

*A range means fast moving products.

TP6

Fitting Reducer

Male Copper x Copper



ITEM	SIZE	PACK
TP061008	10 x 8mm	10
TP061508	15 x 8mm	25
TP061510	15 x 10mm	25
TP061512	15 x 12mm	25
TP062212	22 x 12mm	25
TP062215	22 x 15mm	25 A
TP062815	28 x 15mm	10
TP062822	28 x 22mm	10
TP063515	35 x 15mm	10
TP063522	35 x 22mm	10
TP063528	35 x 28mm	10
TP064215	42 x 15mm	5
TP064222	42 x 22mm	5
TP064228	42 x 28mm	5
TP064235	42 x 35mm	5
TP065415	54 x 15mm	2
TP065422	54 x 22mm	2
TP065428	54 x 28mm	2
TP065435	54 x 35mm	2
TP065442	54 x 42mm	2
TP066728	67 x 28mm	1
TP066735	67 x 35mm	1
TP066742	67 x 42mm	1
TP066754	67 x 54mm	1

*A range means fast moving products.

TP7

Female Adaptor

Copper x Female Thread (Parallel)



ITEM	SIZE	PACK
TP07151/2	15 x 1/2"	10
TP07223/4	22 x 3/4"	5

TP9

Imperial To Metric Adaptor

Female Copper x Male Copper (Imperial)



ITEM	SIZE	PACK
TP09151/2	15 x 1/2"	10
TP09223/4	22 x 3/4"	25
TP09281/0	28 x 1"	10
TP093511/4	35 x 1.1/4"	1
TP094211/2	42 x 1.1/2"	1
TP09542/0	54 x 2"	1

*A range means fast moving products.

TP12

90° Elbow

Copper x Copper



ITEM	SIZE	PACK
TP1208	8 x 8mm	25
TP1210	10 x 10mm	25
TP1212	12 x 12mm	10
TP1215	15 x 15mm	25 A
TP1222	22 x 22mm	25 A
TP1228	28 x 28mm	10
TP1235	35 x 35mm	5
TP1242	42 x 42mm	5
TP1254	54 x 54mm	2
TP1267	67 x 67mm	1

TP12S

Street Elbow

Male Copper x Copper



ITEM	SIZE	PACK
TP12S08	8mm	25
TP12S10	10mm	25
TP12S15	15mm	25 A
TP12S22	22mm	25
TP12S28	28mm	10

*A range means fast moving products.

TP13

Male Elbow

Copper x Male Thread (Taper)



ITEM	SIZE	PACK
TP13151/2	15 x 1/2"	25
TP13223/4	22 x 3/4"	10

TP14

Female Elbow

Copper x Female Thread (Parallel)



ITEM	SIZE	PACK
TP14151/2	15 x 1/2"	25
TP14221/2	22 x 1/2"	10
TP14223/4	22 x 3/4"	10
TP14281/0	28 x 1"	5
TP14351 1/4	35 x 1/2"	5

TP15

Female Wall Plate Elbow

Copper x Female Thread (Parallel)



ITEM	SIZE	PACK
TP15151/2	15 x 1/2"	25

*A range means fast moving products.

TP18

Slow Bend

Copper x Copper



ITEM	SIZE	PACK
TP1815	15mm	25

TP21

45° Elbow

Copper x Copper



ITEM	SIZE	PACK
TP2115	15mm	25
TP2122	22mm	10
TP2128	28mm	10
TP2135	35mm	5
TP2142	42mm	2
TP2154	54mm	2
TP2167	67mm	1

*A range means fast moving products.

TP24

Equal Tee

Copper all ends



ITEM	SIZE	PACK
TP2408	8mm	25
TP2410	10mm	25
TP2412	12mm	10
TP2415	15mm	25 A
TP2422	22mm	25 A
TP2428	28mm	10
TP2435	35mm	5
TP2442	42mm	2
TP2454	54mm	2
TP2467	67mm	1

*A range means fast moving products.

TP25

Tee- Reduced Branch

Copper all ends



ITEM	SIZE	PACK
TP25151510	15 x 15 x 10mm	10
TP25151512	15 x 15 x 12mm	10
TP25222210	22 x 22 x 10mm	10
TP25222215	22 x 22 x 15mm	25 A
TP25282815	28 x 28 x 15mm	10
TP25282822	28 x 28 x 22mm	10
TP25353515	35 x 35 x 15mm	5
TP25353522	35 x 35 x 22mm	5
TP25353528	35 x 35 x 28mm	5
TP25424215	42 x 42 x 15mm	2
TP25424222	42 x 42 x 22mm	2
TP25424228	42 x 42 x 28mm	2
TP25424235	42 x 42 x 35mm	2
TP25545415	54 x 54 x 15mm	2
TP25545422	54 x 54 x 22mm	2
TP25545428	54 x 54 x 28mm	2
TP25545435	54 x 54 x 35mm	1
TP25545442	54 x 54 x 42mm	1

*A range means fast moving products.

TP26 Tee - Reduced End

Copper all ends



ITEM	SIZE	PACK
TP26221522	22 x 15 x 22mm	25
TP26281528	28 x 15 x 28mm	10
TP26282228	28 x 22 x 28mm	10
TP26351535	35 x 15 x 35mm	2
TP26352235	35 x 22 x 35mm	2
TP26352835	35 x 28 x 35mm	2
TP26422842	42 x 28 x 42mm	2
TP26423542	42 x 35 x 42mm	2
TP26544254	54 x 42 x 54mm	2

TP27 Tee - Reduced End & Branch

Copper all ends



ITEM	SIZE	PACK
TP27221515	22 x 15 x 15mm	25
TP27281522	28 x 15 x 22mm	10
TP27282215	28 x 22 x 15mm	10
TP27282222	28 x 22 x 22mm	10
TP27352222	35 x 22 x 22mm	2
TP27352815	35 x 28 x 15mm	2
TP27352822	35 x 28 x 22mm	2
TP27352828	35 x 28 x 28mm	2
TP27422828	42 x 28 x 28mm	2
TP27423528	42 x 35 x 28mm	2
TP27423535	42 x 35 x 35mm	2
TP27544242	54 x 42 x 42mm	2

*A range means fast moving products.

TP28 Tee - Reduced Both Ends

Copper all ends



ITEM	SIZE	PACK
TP28151522	15 x 15 x 22mm	25
TP28151528	15 x 15 x 28mm	10
TP28222228	22 x 22 x 28mm	10
TP28222235	22 x 22 x 35mm	1
TP28282835	28 x 28 x 35mm	1
TP28353542	35 x 35 x 42mm	1
TP28424254	42 x 42 x 54mm	1

TP29 Tee - Female End

Copper x Female Thread (Parallel) x Copper



ITEM	SIZE	PACK
TP29151/215	15 x 1/2 x 15mm	25
TP29223/422	22 x 3/4 x 22mm	10

TP29R Tee - Reduced Female End

Copper x Female Thread (Parallel) x Copper



ITEM	SIZE	PACK
TP29R221/222	22 x 1/2 x 22mm	10
TP29R281/228	28 x 1/2 x 28mm	5

*A range means fast moving products.

TP30

Tee - Female Branch

Copper x Copper x Female Thread (Parallel)



ITEM	SIZE	PACK
TP3015151/2	15 x 15 x 1/2"	25
TP3022223/4	22 x 22 x 3/4"	10

TP30R

Tee - Female Branch

Copper x Copper x Female Thread (Parallel)



ITEM	SIZE	PACK
TP30R22221/2	22 x 22 x 1/2"	5
TP30R28281/2	28 x 28 x 1/2"	5

*A range means fast moving products.

TP35

Air Vent

Copper x Copper



ITEM	SIZE	PACK
TP3515	15mm	5

TP37

Sweep Tee

Copper all ends



ITEM	SIZE	PACK
TP3715	15mm	5
TP3722	22mm	5
TP3728	28mm	1

TP61

Stop End

Copper



ITEM	SIZE	PACK
TP6108	8mm	25
TP6110	10mm	25
TP6112	12mm	25
TP6115	15mm	25
TP6122	22mm	25
TP6128	28mm	10
TP6135	35mm	5
TP6142	42mm	5
TP6154	54mm	2

TP62 Straight Tap Connector

Copper x Swivel Female



ITEM	SIZE	PACK
TP62151/2	15 x 1/2"	25 A
TP62153/4	15 x 3/4"	10
TP62223/4	22 x 3/4"	25

Supplied with washer

TP63 Bent Tap Connector

Copper x Swivel Female Thread



ITEM	SIZE	PACK
TP63151/2	15 x 1/2"	25
TP63223/4	22 x 3/4"	10

Supplied with washer

TP64 Bent Cylinder

Copper x Swivel Female Thread



ITEM	SIZE	PACK
TP64221/0	22 x 1"	10
TP642811/4	28 x 1.1/4"	5

*A range means fast moving products.

TP68 Straight Cylinder Union

Copper x Swivel Female



ITEM	SIZE	PACK
TP68153/4	15 x 3/4"	10
TP68221/0	22 x 1"	10
TP682811/4	28 x 1.1/4"	5
TP683511/2	35 x 1.1/2"	1
TP68422/0	42 x 2"	1
TP685421/2	54 x 2.1/2"	1

TP68CL Straight Union Adaptor

Copper x Copper



ITEM	SIZE	PACK
TP68CL153/4	15 x 3/4"	5

TP70 Male Nipple

(Taper)



ITEM	SIZE	PACK
TP703/41/2	3/4 x 1/2"	10
TP701/03/4	1 x 3/4"	10
TP7011/41/0	1.1/4 x 1"	5
TP7011/211/4	1.1/2 x 1.1/4"	2
TP702/011/2	2 x 1.1/2"	2
TP7021/22/0	2.1/2 x 2"	1

*A range means fast moving products.

TP72

Female Nipple

Copper x Yellow Brass



ITEM	SIZE	PACK
TP723/41/2	3/4 x 1/2"	10
TP721/03/4	1 x 3/4"	10
TP7211/41/0	1.1/4 x 1"	10
TP7211/211/4	1.1/2 x 1.1/4"	2
TP722/011/2	2 x 1.1/2"	2
TP7221/22/0	2.1/2 x 2"	1

TP97

Sealing Washer

Copper



ITEM	SIZE	PACK
TP971/2	1/2"	25
TP973/4	3/4"	25

*A range means fast moving products.



APPROVALS

PRODUCT	Delcop End Feed	Medical Gas Brazing	Delbraze	>B< ACR	K65	Triflow Solder Ring	Conex Compression	>B< Press Copper	>B< Press Carbon		>B< Press Inox	>B< Press Gas	>B< Press Solar	>B< Push	Conex Push-Fit	Cuprofit	Series 3000	Series 8000	>B< Oyster
DESCRIPTION	Solder/ Brazing fittings	Brazing fittings	Brazing fittings	Imperial brazing fittings	High Pressure brazing fittings	Integral Solder fittings	Type A Compression fittings	Press fittings for water	Press fittings Carbon		Press fittings Stainless steel	Press fittings for Gas applications	Press fittings for Solar applications	Push fittings	Push fittings	Push fittings	Red Brass Threaded fittings	Yellow Brass Threaded fittings	Special O-ring seal connector
APPROVAL																			
WRAS	✓		✓			✓	✓	✓					✓	✓	✓	✓			✓
DVGW	✓						✓	✓			✓	✓		✓	✓		✓		✓
KIWA	✓		✓				✓	✓				✓			✓	✓			
Kitemarked	✓		✓			✓	✓												
SITAC							✓												
SVGW								✓	✓								✓		
ARBG												✓							
ANSI B16.22				✓															
ATG												✓							
CORBTI																			
EMI											✓		✓			✓	✓	✓	✓
AENOR			✓																
CSTB								✓	✓										
SPF													✓						
NSAI							✓												
DG																			
DNV																			
ETA													✓						
GASTEC													✓						
G-LLOYDS	✓		✓				✓												
GOST-R																			
ATG WATER								✓											
OVGW																			
TVSK	✓								✓		✓		✓			✓	✓	✓	✓
TUV					✓														
UPS														✓					
SINTEF														✓					
SWEDCERT								✓			✓			✓	✓				
STF														✓					
BOC/MEDAES 3000000		✓																	
BUREAU VERITAS	✓						✓									✓	✓		

PLEASE CONTACT OUR TECHNICAL TEAM FOR MORE INFORMATION.

Conex | Bänninger



United Kingdom

Conex Universal Limited

Germany

IBP GmbH

Spain/France

IBP Atcosa SL

Italy

IBP Bänninger Italia srl

Poland Sales, Marketing and logistics

IBP Instalittings Sp z.o.o.

China

IBP China

www.conexbanninger.com



*Conex | Bänninger products are approved by numerous Standards Authorities and Certification Bodies. For more details on this product range, please email our technical team at: technical@ibpgroup.com. This is a representation of the full range from Conex Universal. IBP trade marks are registered in numerous countries.

The content of this publication is for general information only. It is the user's responsibility to determine suitability of any product for the purpose intended and reference should be made to our Technical Department if clarification is required. In the interests of technical development we reserve the right to change specification, design and materials without notice.

